

# Facial Fractures in Homeless Patients

Homeless patients are vulnerable to traumatic injuries...



...such as



Facial fractures in adult population : 14% to 20%

Risk factors for facial fractures among homeless patients are not well studied



2,221 adults with facial fractures

- Homelessness
- Mechanism of injury
- Facial fracture type
- Surgical repair type

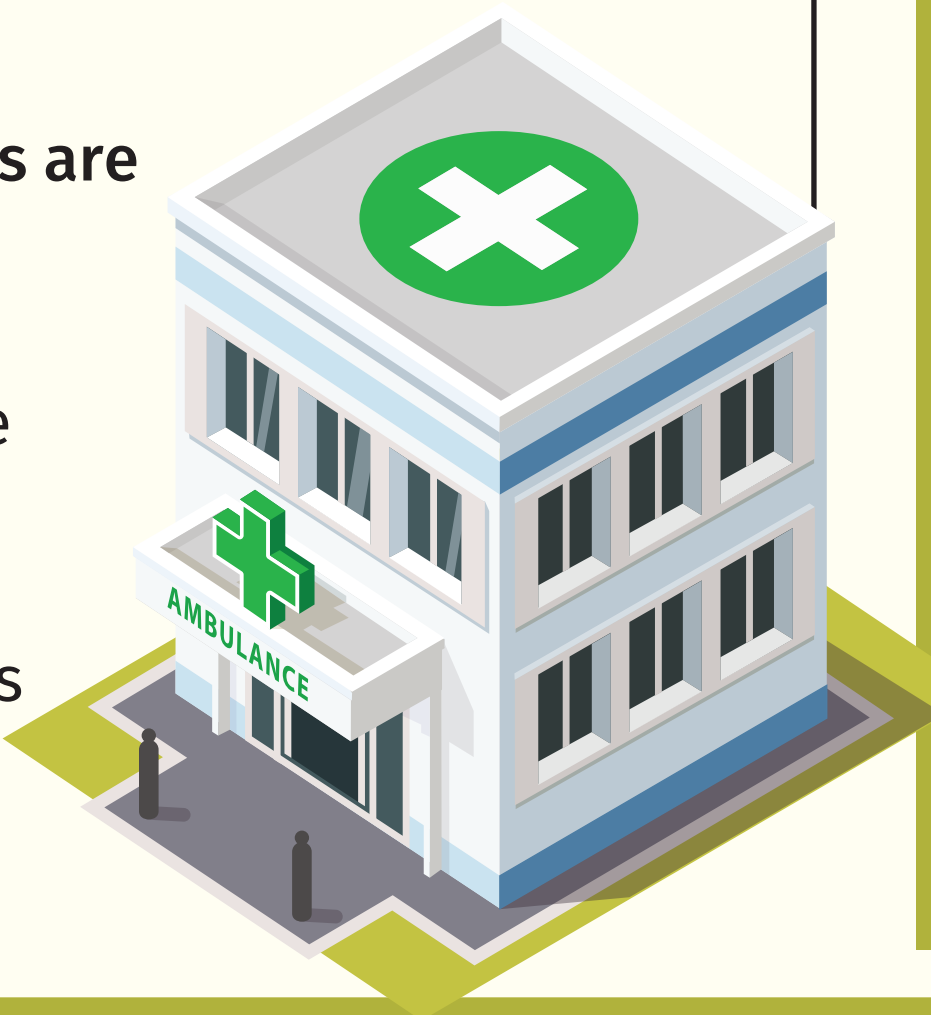
Multivariate multinomial logistic regression analysis



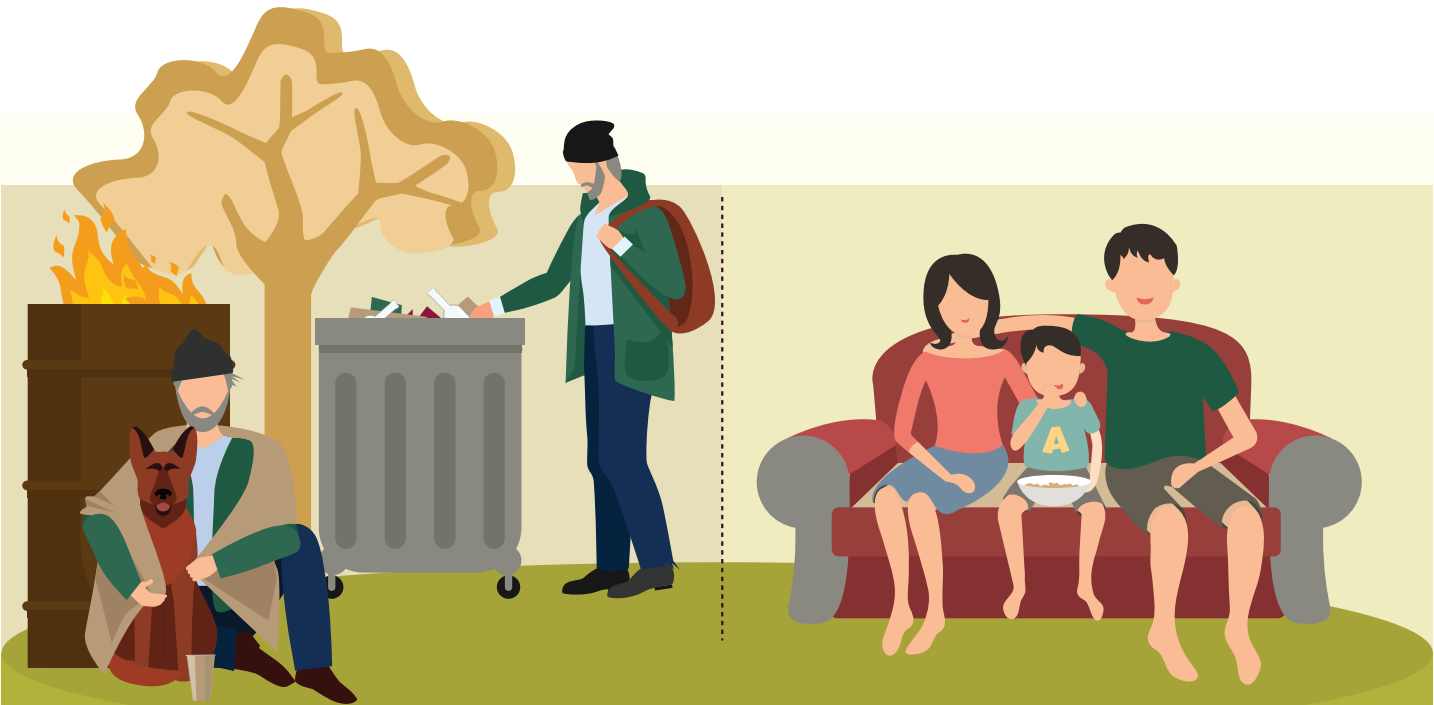
12% of the population were homeless

Homeless patients with facial fractures are more likely to

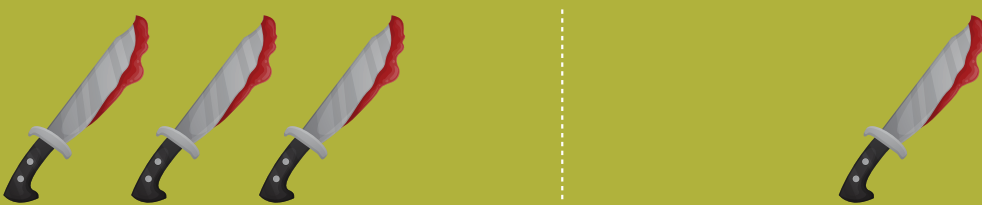
- be male, black, and test positive for drug and alcohol use
- have lower injury severity scores but longer hospital stays



Homeless patients with facial fractures are more likely to have been assaulted, suffer mandible fractures, and require surgery



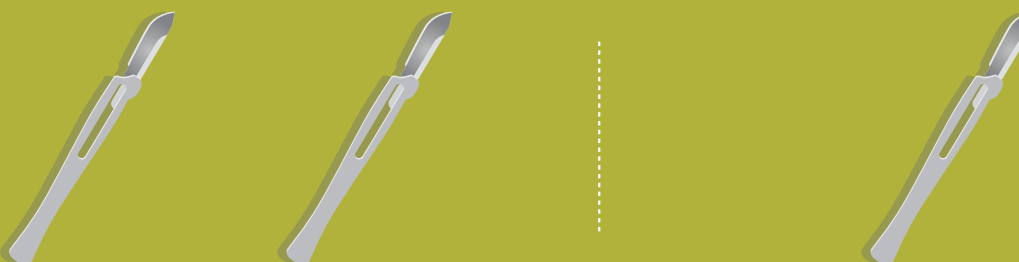
Homeless patients Vs. Housed patients



3-fold more likely to be assaulted



2-fold more likely to have mandible fractures



2-fold more likely to have surgery