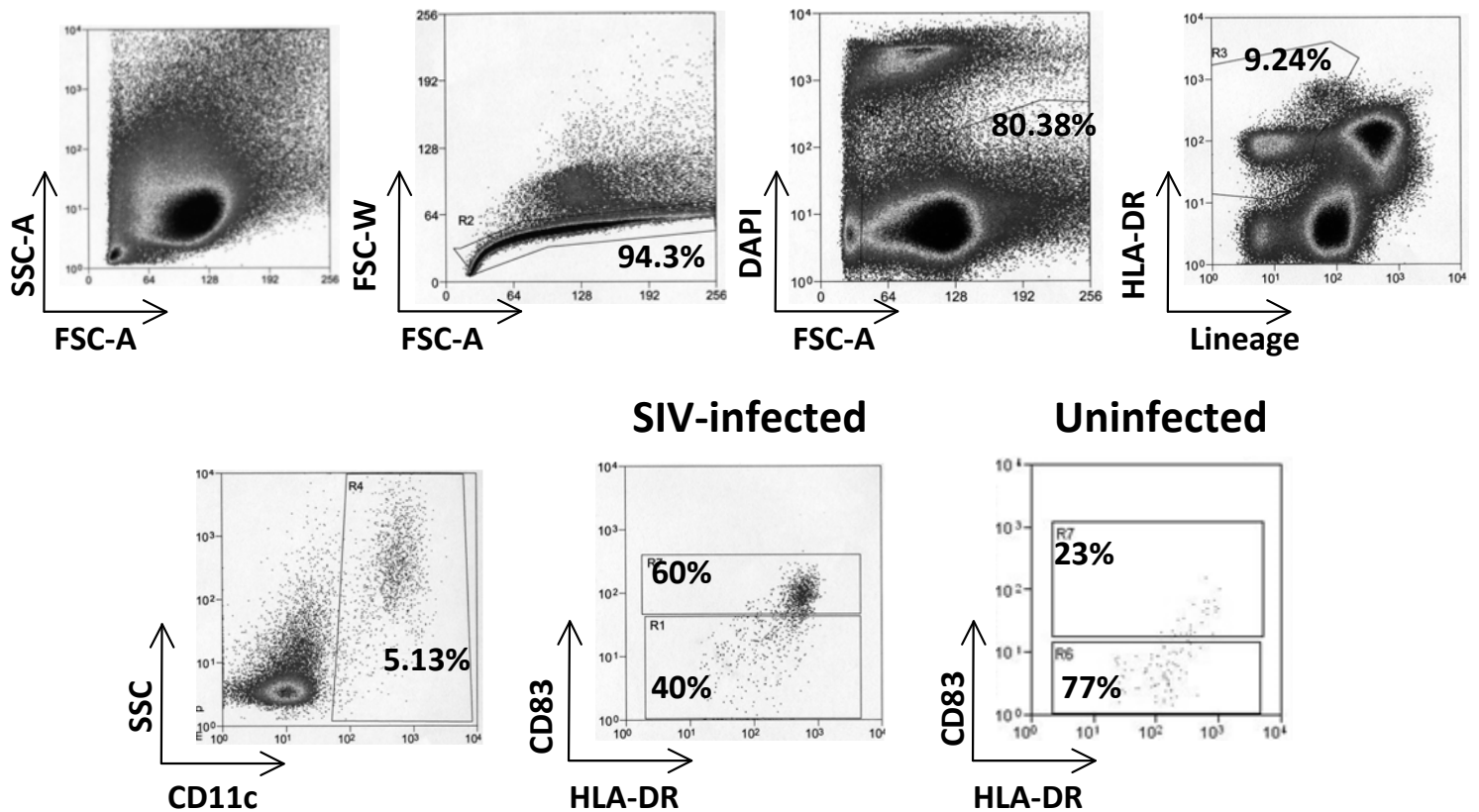
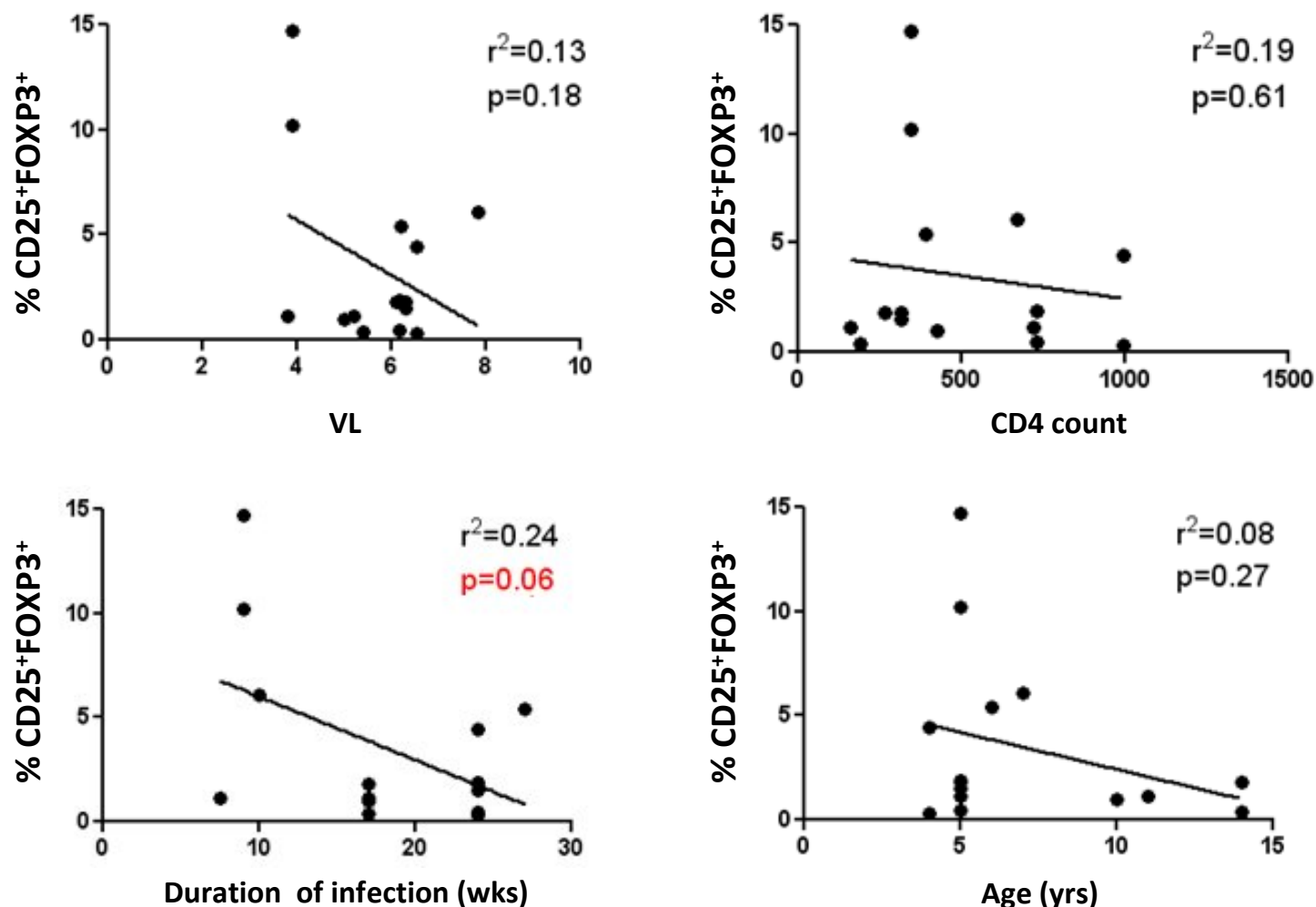


## Supplemental Digital Content 1



**Supplemental Fig. 1.** Representative sorting strategy for mDC purification. SPL or MLN cell suspensions were stained with anti-lineage cocktail (anti-CD3, -CD20, -CD14, -EpCam and -NKG2D), anti-CD11c, anti-HLA-DR, and anti-CD83. DAPI staining was used to exclude dead cells. Myeloid DCs were sorted into Lineage<sup>-</sup>HLA-DR<sup>+</sup>CD11c<sup>+</sup> CD83<sup>+</sup> mature and Lineage<sup>-</sup>HLA-DR<sup>+</sup>CD11c<sup>+</sup> CD83<sup>-</sup> immature mDC subsets.

## Supplemental Digital Content 2



**Supplemental Fig. 2.** Percentage of induced Treg by MLN or SPL DC was correlated with viral load (top left), CD4 count (top right), duration of infection (lower left), or age (lower right) using linear regression analysis.