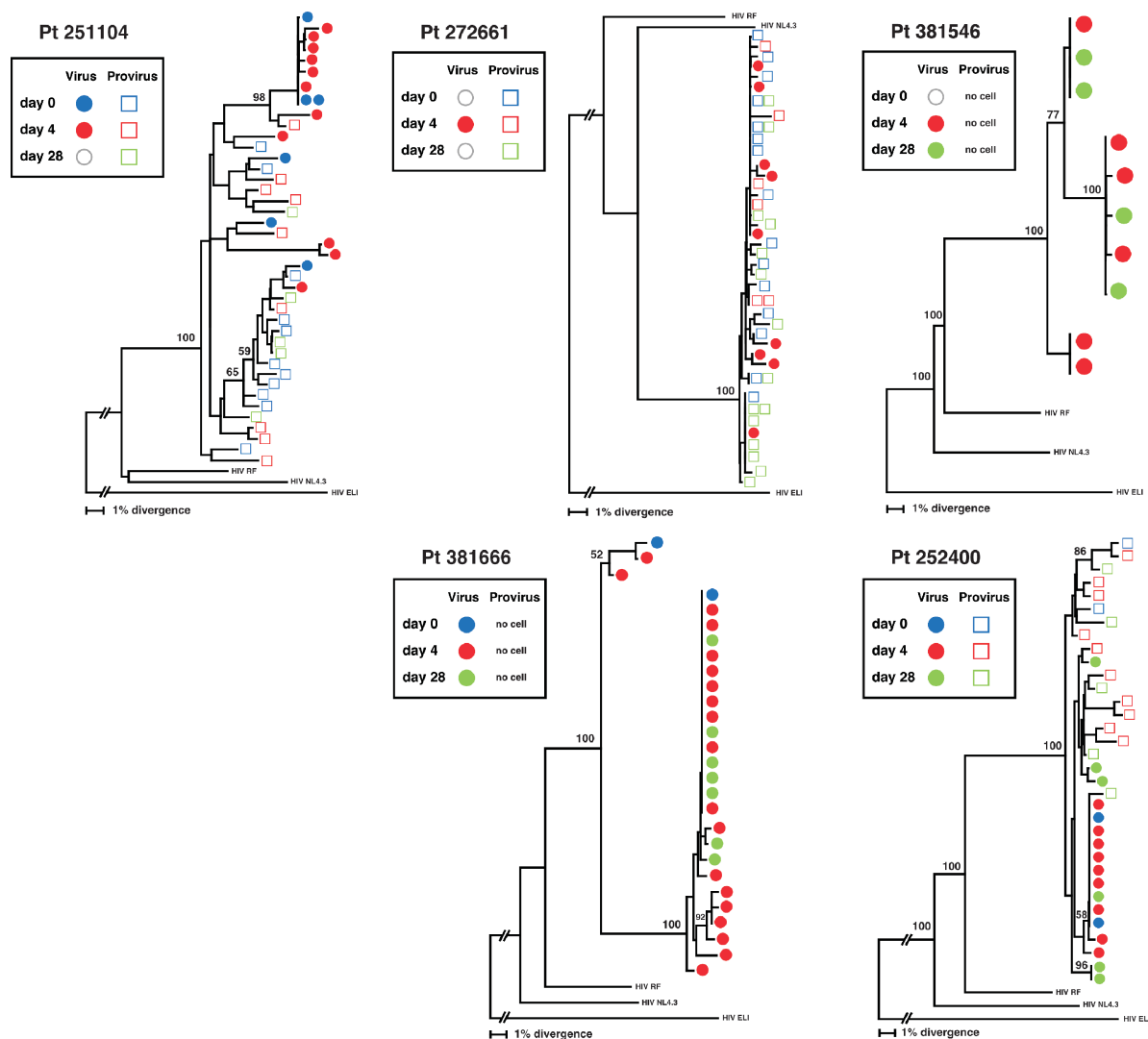


Supplemental Figure 1.



Phylogenetic analysis of the HIV-1 envelope sequences obtained from plasma virion RNA and proviral DNA in PBMC at days 0, 4 and 28 of rhIL-7 therapy. Trees from five of seven subjects studied in the present study are shown. Phylogenetic relationships among the C2-V3 region of the env gene were estimated using the neighbor-joining method. Bootstrap percentile values from 1000 replications are shown at nodes defining major grouping of sequences. Statistical support of 50% or greater is shown. Colors identify times when samples are obtained. Grey circles indicate that PCR amplification of virion RNA was unsuccessful.