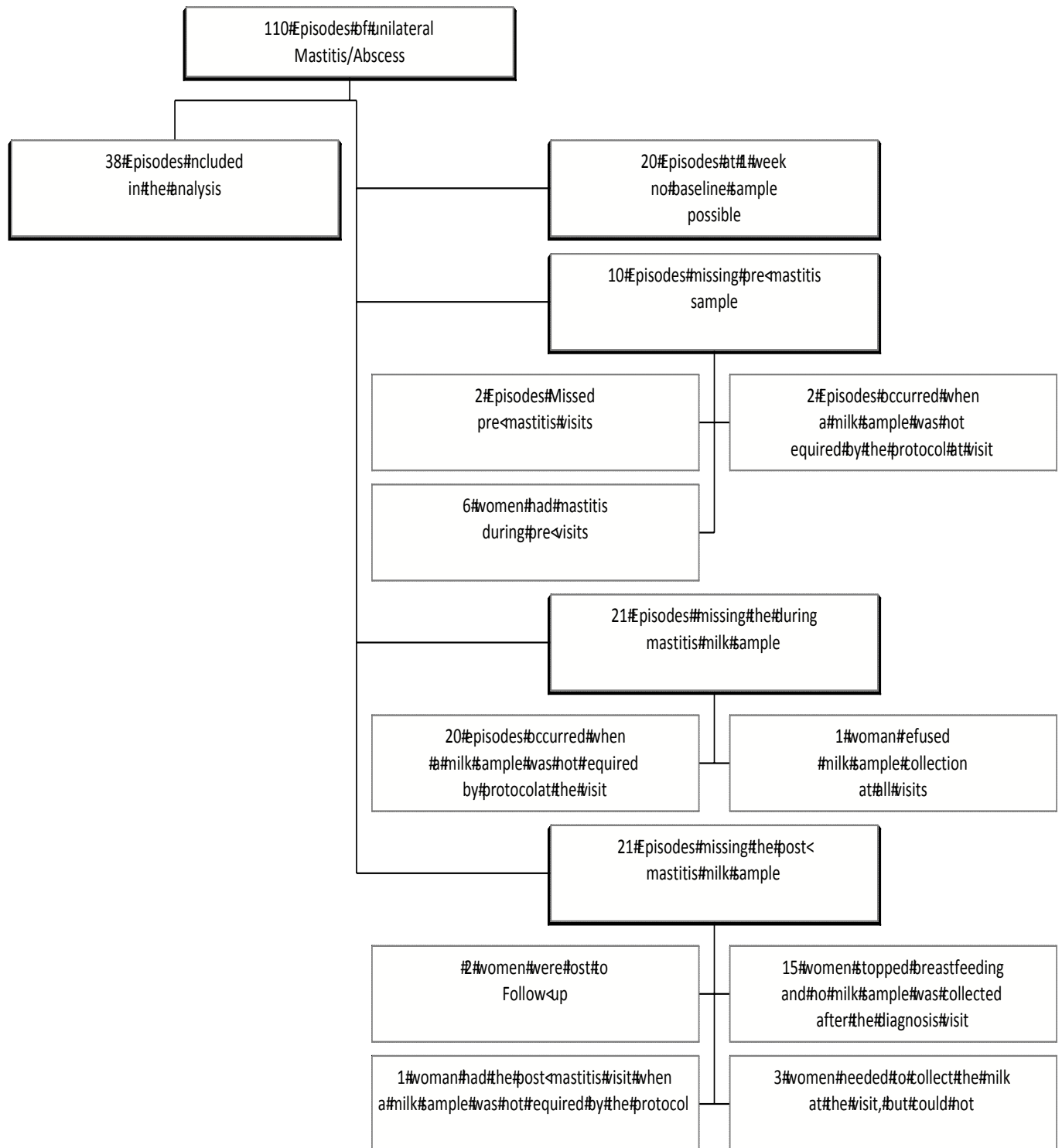


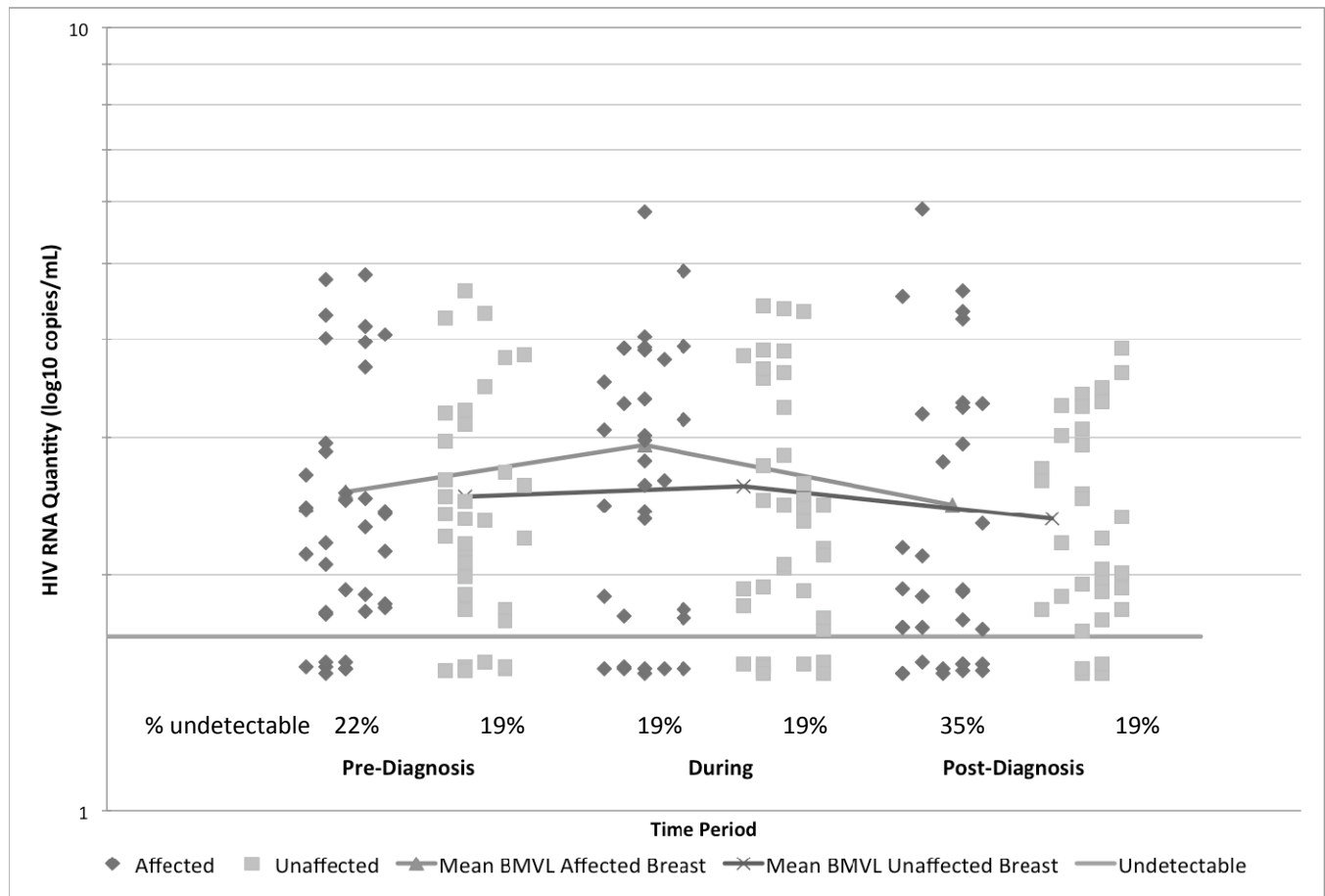
Supplemental Digital Content

Figure S1: Selection of samples from 110 episodes of unilateral mastitis and abscess in



86 women

Figure S2. Breast milk HIV RNA quantity in 38 women with unilateral mastitis or abscess before, during and after diagnosis in the affected and contralateral unaffected breast



Mean values at each time point for affected and unaffected breasts separately are connected by a light grey line with triangles (affected breast) and dark grey line with x (contralateral unaffected breast). Limit of detection of the assay is indicated by a solid horizontal line.

Figure S3: Change in HIV RNA concentration in breast milk from pre- to during- pathology by specific breast symptoms

