

SUPPLEMENTAL DIGITAL CONTENT

Table S1: Health facility level of which data was collected per year

Year	Hospital	HCII	HCIII	HCIV	Total
2002	2	0	0	0	2
2003	2	0	0	0	2
2004	2	0	0	0	2
2005	3	0	1	1	5
2006	3	0	10	2	15
2007	3	2	10	2	17
2008	3	0	13	3	19
2009	3	0	16	2	21
2010	3	0	20	1	24
2011	3	0	20	1	24

Hospitals serve a district or larger health sub-district and offer in and outpatient care and specialized clinics.

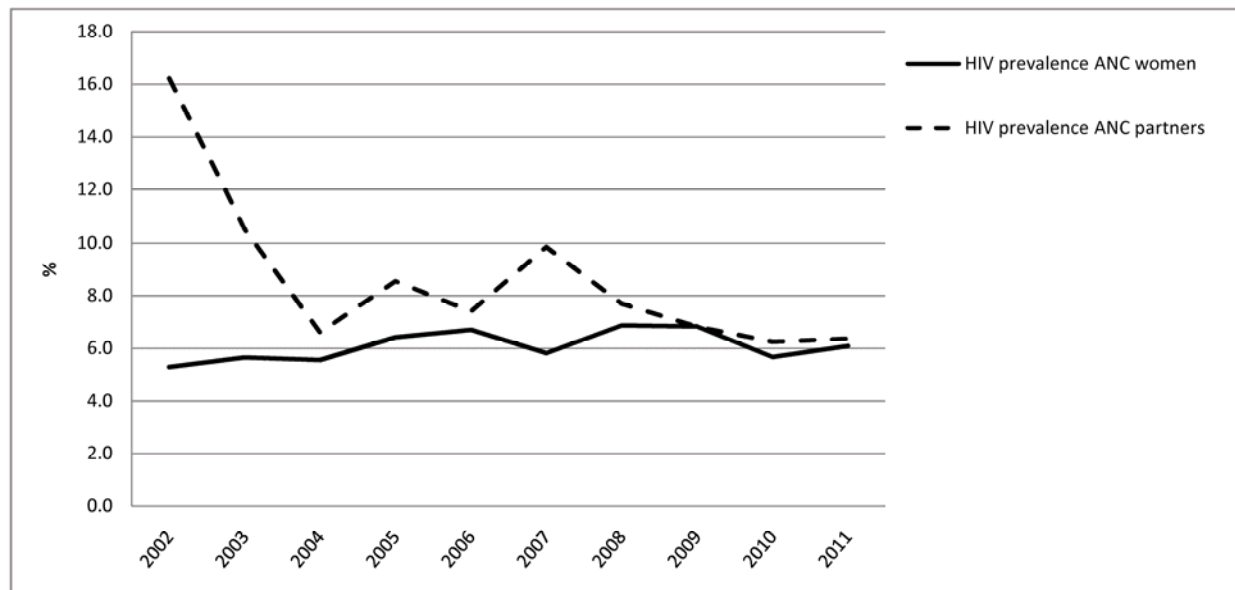
Health center IV function as a mini-hospital at county level with inpatient and outpatient services, and should be run by a doctor.

Health center III offer preventive, promotive and curative care and should have a senior clinical offer and a general outpatient clinic, maternity ward, and functioning laboratory.

Health center II are led by an enrolled nurse, and only provide outpatient care and community services at parish level.

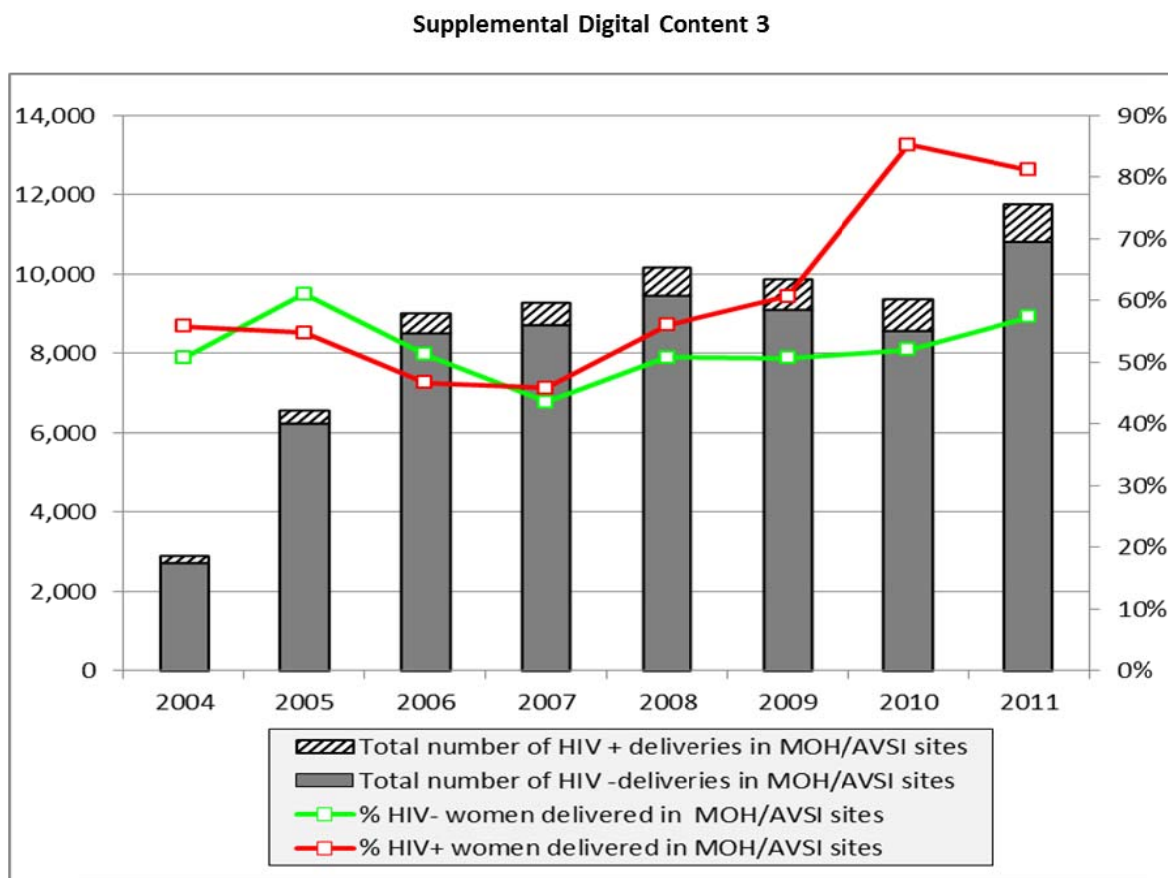
SUPPLEMENTAL DIGITAL CONTENT

Figure S1.



SUPPLEMENTAL DIGITAL CONTENT

Figure S2.



Percentage of ANC women who delivered in health facilities in 24 MoH/AVSI-supported PMTCT sites in Northern Uganda between 2004 and 2011.

Note: The drop observed between 2005 and 2007 coincided with the time when IDP started returning from camps to their villages of origin, further away from health facilities.