

## Supplemental Digital Content - FigureS1: CNS Infection flow sheet (Comprehensive)

Name \_\_\_\_\_

Date \_\_\_\_\_

Suspicion for central nervous system infection (fever, headache, altered mental status, meningeal signs, etc)

Lumbar Puncture (record opening pressure)

- ☐ CSF White Blood Cell Count (PMN, Lymphocyte)
- ☐ CSF glucose
- ☐ CSF protein
- ☐ Gram stain
- ☐ Bacterial culture
- ☐ AFB Ziehl-Neelsen stain(at least 6 mL)

Initiate Ceftriaxone 2g IV if symptom < 10 days.    ☐ started    ☐ no

<b>Definite Bacterial Meningitis:</b> positive gram stain or culture in CSF or CSF PMN > 50% + positive blood culture + CSF:serum glucose < 0.5 <b>Probable BM:</b> CSF PMN >50% + CSF:serum glucose <0.5 + improvement on antibiotic treatment <b>→ Bacterial Meningitis treatment</b>	<b>Definite Tuberculous Meningitis:</b> Acid fast bacilli in the CSF <b>→ Treat tuberculous meningitis</b>	<b>Cryptococcal meningitis:</b> Positive India ink or serum/CSF cryptococcal antigen
<b>Possible BM:</b> CSF PMN >50% + CSF:serum glucose <0.5 <b>→ Bacterial Meningitis treatment</b>	<b>Probable TBM:</b> CSF lymphocytes >50% + CSF:serum glucose < 0.5 + one of the following: - Active TB on CXR - AFB found in sample other than from CSF - clinical evidence of other extrapulmonary TB	<b>Possible Viral Meningitis:</b> CSF finding (lymphocytes >50% and CSF:serum glucose > 0.5)
	<b>Possible TBM:</b> CSF lymphocytes >50% + CSF:serum glucose < 0.5 + illness > 6 days <b>→ BM therapy, reassess in 48 hours</b>	<b>Other abnormal CSF findings in Non-HIV patients:</b> <b>→ Continue BM treatment</b> <b>Other CSF finding in HIV patients (including normal CSF):</b> <b>→ Continue BM treatment</b> <b>→ Consider IRIS if lymphocytic predominance and on ART</b>

Repeat Lumbar Puncture

- ☐ AFB stain(at least 6 mL)
- ☐ leukocyte count with diff    ☐ CSF protein & glucose
- ☐ Gram stain                      ☐ CSF bacterial culture
- consider TBM therapy if rise in CSF/serum glucose <100%

No

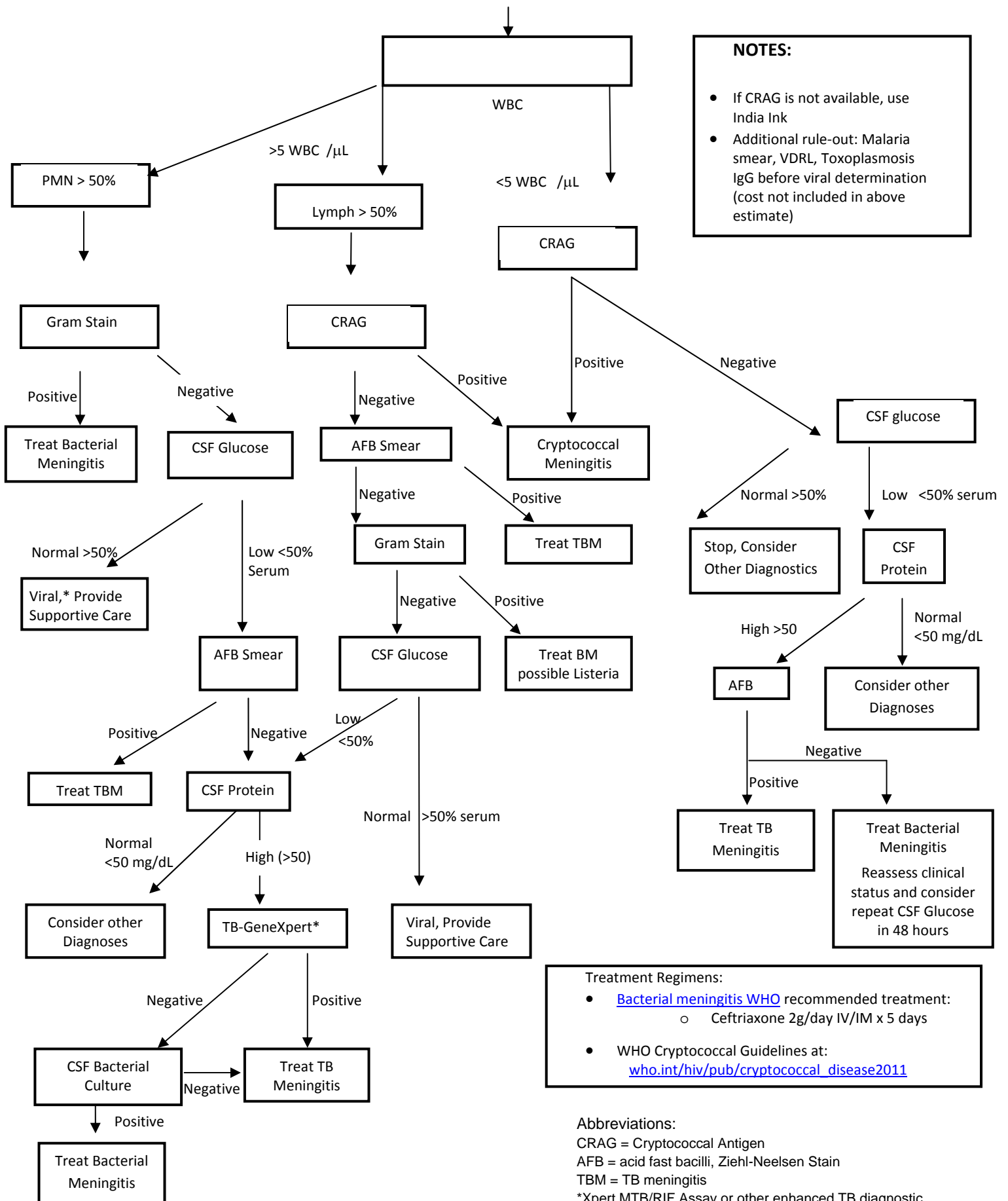
Definite diagnosis or improvement within 48 hours?

Yes

Continue Treatment

**FigureS2: CNS Infection flow sheet (Stepwise)**

**Suspicion for central nervous system infection (fever, headache, altered mental status, meningeal signs, etc)**



**FigureS3: CNS Infection flow sheet (Minimalist)**

Suspicion for central nervous system infection (fever, headache, altered mental status, meningeal signs, etc)

