

Figure S1

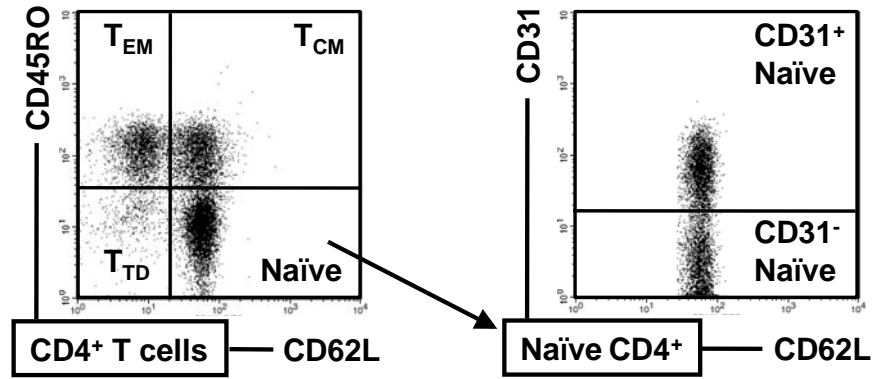


FIGURE S1. Gating scheme for differentiating distinct naïve and memory CD4⁺ T cell subsets. Naïve CD4⁺ T cells were identified by CD62L expression on CD45RO⁻ CD4⁺ T cells and differentiated into CD31⁺ and CD31⁻. T_{CM} were classified by co-expression of CD45RO and CD62L and T_{EM} were classified by lack of CD62L expression. T_{TD} were identified by the lack of CD62L expression on CD45RO⁻ CD4⁺ T cells. Relative frequencies of the distinct subsets within the total CD4⁺ T cell compartment were determined. Derived from absolute CD4⁺ T cell counts and the percentages of the distinct subsets, absolute cell numbers of the distinct subsets were calculated.