

Figure S1. Participant Disposition

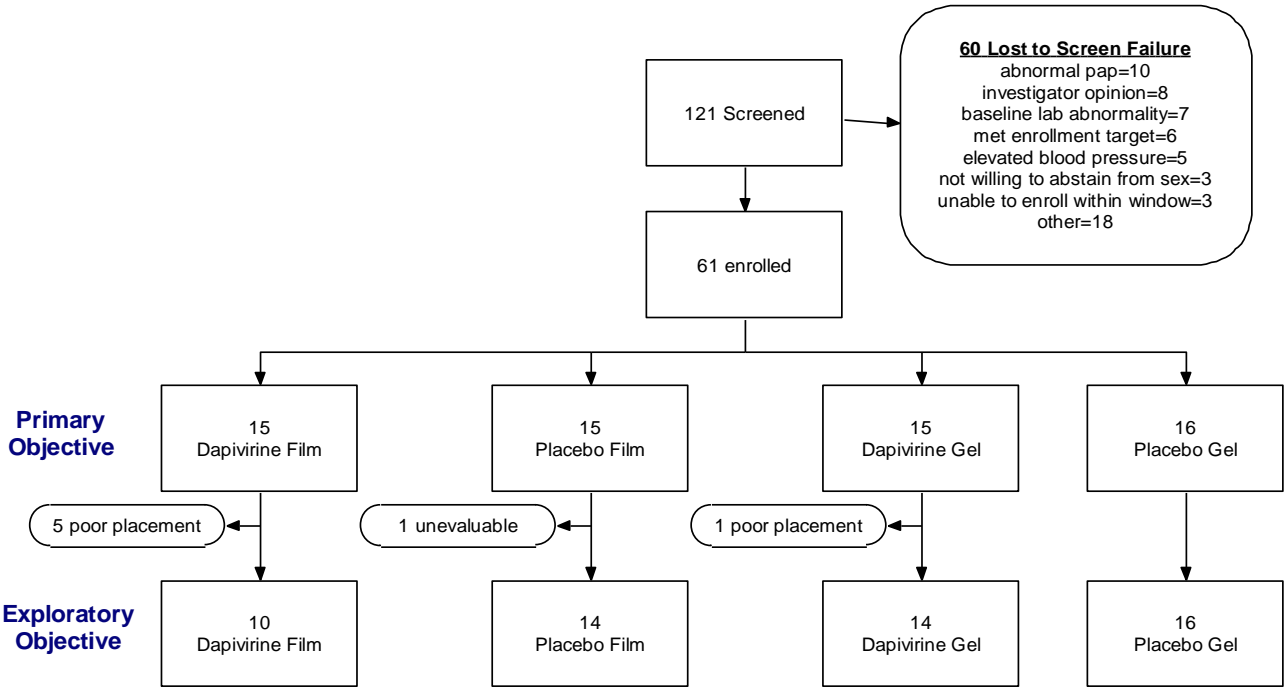


Table S1. Demographic and Behavioral Characteristics of the Study Population

Characteristic	Total (N=61)	Placebo Gel (n=16)	Dapivirine Gel (n=15)	Placebo Film (n=15)	Dapivirine Film (n=15)	P-value*
Age, years (mean \pm SD)	26.7 \pm 6.4	24.9 \pm 5.5	27.1 \pm 6.0	29.9 \pm 8.2	24.8 \pm 4.2	0.082 [†]
Race						0.241
White, non-Hispanic	32 (52.5%)	9 (56.3%)	9 (60.0%)	7 (46.7%)	7 (46.7%)	
Black, non-Hispanic	22 (36.1%)	4 (25.0%)	4 (26.7%)	6 (40.0%)	8 (53.3%)	
Black, Hispanic	2 (3.3%)	2 (12.5%)	0	0	0	
Asian	3 (4.9%)	1 (6.3%)	0	2 (13.3%)	0	
American Indian/ Alaskan Native	2 (3.3%)	0	2 (13.3%)	0	0	
Education, yrs						0.277
Less than 12	1 (1.6%)	0	1 (6.7%)	0	0	
12 – 16	48 (78.7%)	11 (68.8%)	10 (66.7%)	14 (93.3%)	13 (86.7%)	
More than 16	12 (19.7%)	5 (31.3%)	4 (26.7%)	1 (6.7%)	2 (13.3%)	
Relationship status						0.952
Single	33 (54.1%)	9 (56.3%)	9 (60.0%)	7 (46.7%)	8 (53.3%)	
Cohabitating	10 (16.4%)	3 (18.8%)	1 (6.7%)	3 (20.0%)	3 (20.0%)	
Married	17 (27.9%)	4 (25.0%)	5 (33.3%)	4 (26.7%)	4 (26.7%)	
Divorced	1 (1.6%)	0	0	1 (6.7%)	0	
Current smoker	8 (13.1%)	2 (12.5%)	0	3 (20.0%)	3 (20.0%)	0.287
Frequency of alcohol use						0.447
Never	7 (11.5%)	1 (6.3%)	3 (20.0%)	2 (13.3%)	1 (6.7%)	
Less than monthly	21 (34.4%)	6 (37.5%)	8 (53.3%)	4 (26.7%)	3 (20.0%)	
Monthly	20 (32.8%)	4 (25.0%)	3 (20.0%)	6 (40.0%)	7 (46.7%)	
Weekly	13 (21.3%)	5 (31.3%)	1 (6.7%)	3 (20.0%)	4 (26.7%)	
Currently sexually active	29 (47.5%)	10 (62.5%)	5 (33.3%)	7 (46.7%)	7 (46.7%)	0.469
Current birth control methods						0.397
None, non-hormonal methods	14 (23.0%)	3 (18.8%)	3 (20.0%)	7 (46.7%)	1 (6.7%)	
Oral hormonal contraceptives	17 (27.9%)	6 (37.5%)	2 (13.3%)	4 (26.7%)	5 (33.3%)	
Intra-uterine device	15 (24.6%)	4 (25.0%)	4 (26.7%)	2 (13.3%)	5 (33.3%)	
Injectable contraceptives	12 (19.7%)	2 (12.5%)	5 (33.3%)	2 (13.3%)	3 (20.0%)	
Implant	2 (3.3%)	1 (6.3%)	1 (6.7%)	0	0	
Transdermal patch	1 (1.6%)	0	0	0	1 (6.7%)	
Ever heard of microbicides	14 (23.0%)	2 (12.5%)	4 (26.7%)	4 (26.7%)	4 (26.7%)	0.756
Use of vaginal product by prescription in the	21 (34.4%)	4 (25.0%)	4 (26.7%)	4 (26.7%)	9 (60.0%)	0.153

past						
Condom use frequency last 10 sexual encounters						0.776
Did not use	40 (65.6%)	9 (56.3%)	10 (66.7%)	11 (73.3%)	10 (66.7%)	
1-4	6 (9.8%)	2 (12.5%)	2 (13.3%)	0	2 (13.3%)	
5-9	3 (4.9%)	2 (12.5%)	0	0	1 (6.7%)	
Always	12 (19.7%)	3 (18.8%)	3 (20.0%)	4 (26.7%)	0	

* P-value from Fisher's exact test

† P-value from one-way analysis of variance.