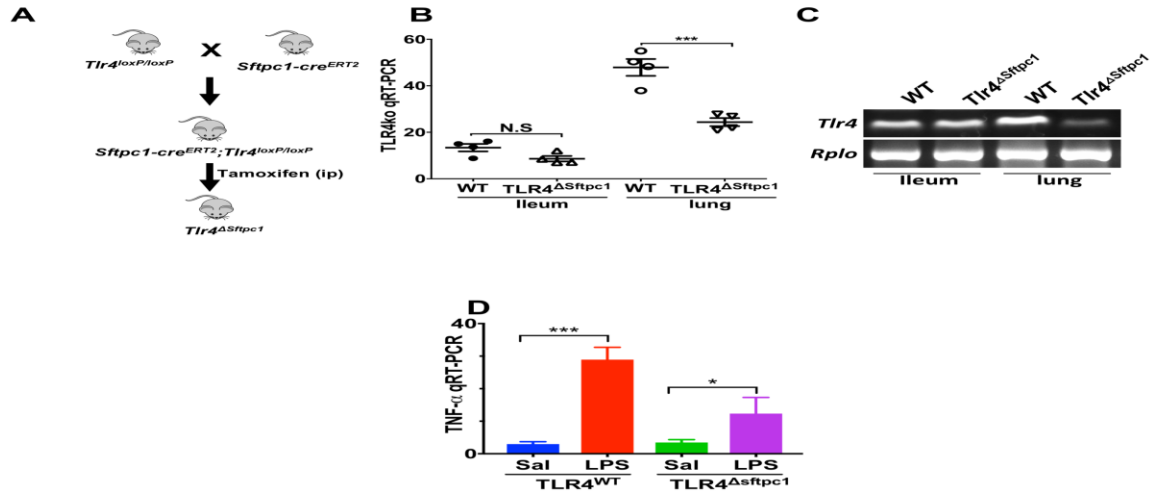


Suppl Figure 1, Jia et al



**Supplemental Figure 1. Generation and validation of mice lacking TLR4 in *sftpc1* lung epithelia.** A. Outline of the breeding scheme; B-C: qRT-PCR (B) and Agarose gel PCR (C) showing the expression of TLR4 in the ileum and lung of wild-type (WT) and TLR4 $\Delta$ sftpc1 mice along with the housekeeping gene *Rpl0*; D: qRT-PCR showing the expression of the pro-inflammatory cytokine TNF- $\alpha$  in the lung of either wild-type (WT) or TLR4 $\Delta$ sftpc1 mice that were administered i.p., saline or LPS (5mg/kg) for 6hrs. Error bars indicate the mean  $\pm$  SEM. \* $p < 0.05$ , \*\*\* $p \leq 0.001$ , when comparisons between two groups were made by Student t-test, and for multiple groups by ANOVA. Data shown are derived from 3 independent experiments.  $n \geq 4$ .