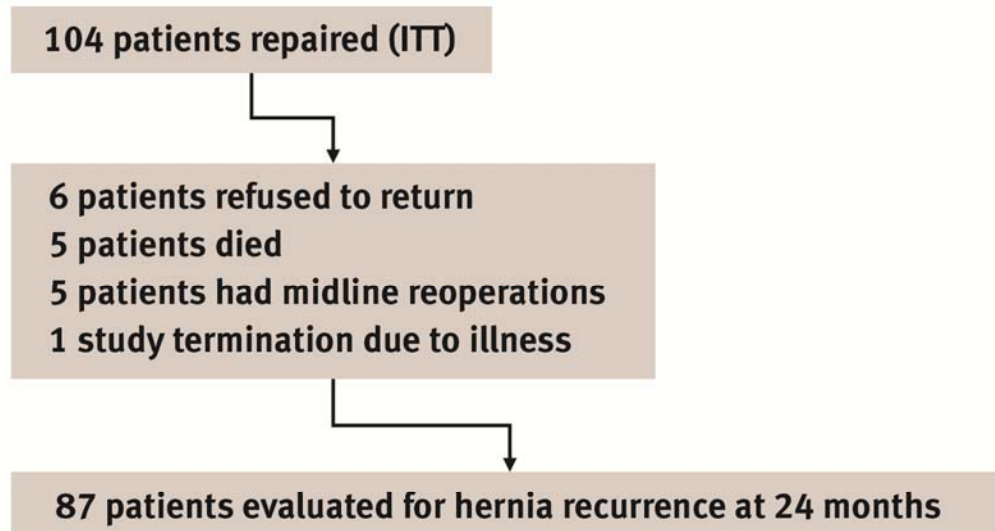
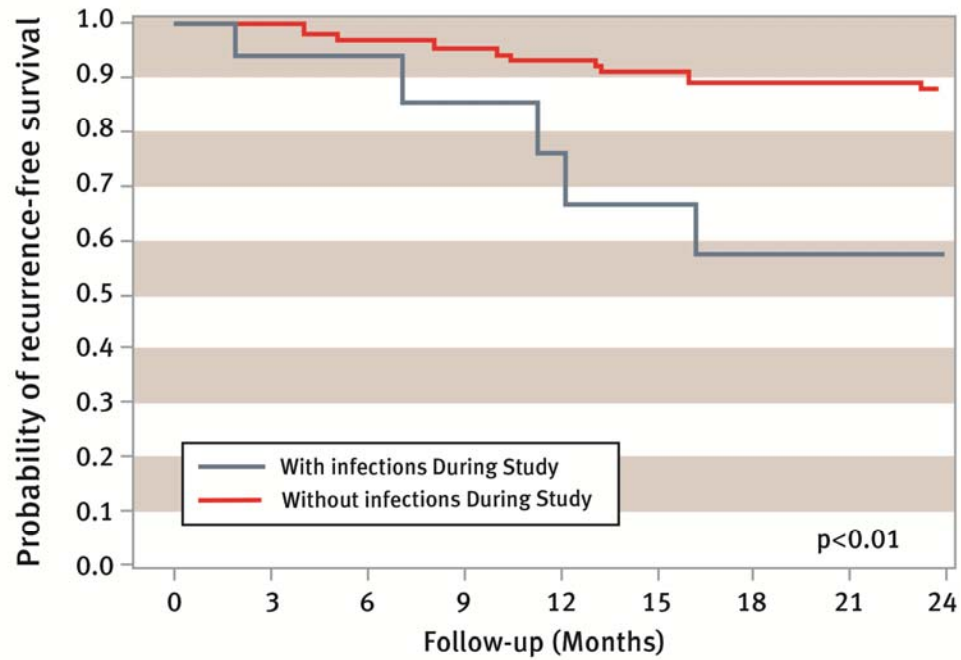


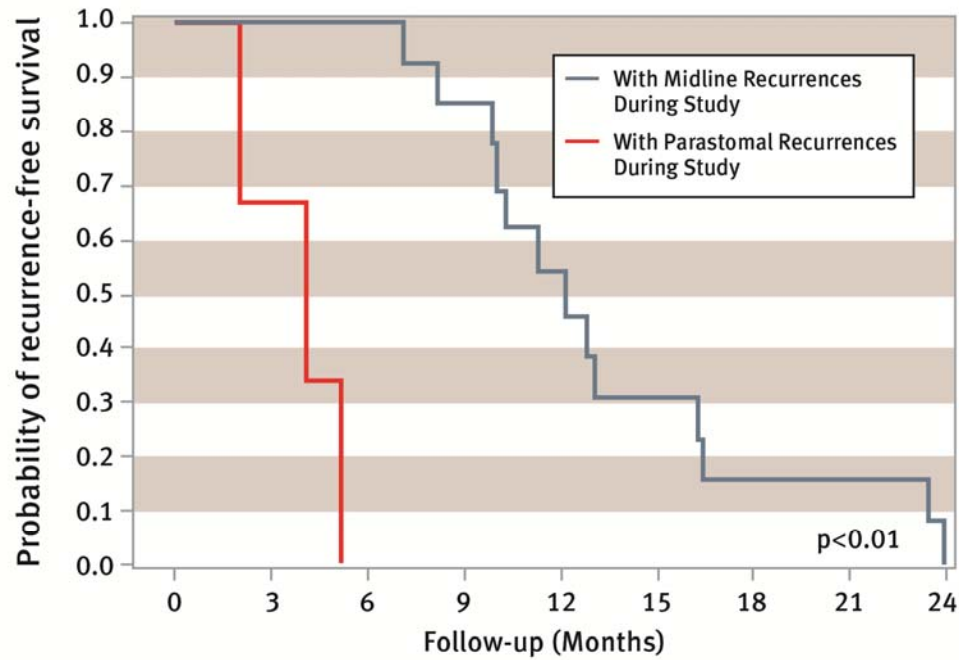
Supplemental Figure 1. Study Population: Intention to Treat for Hernia Recurrence at 24 Months.



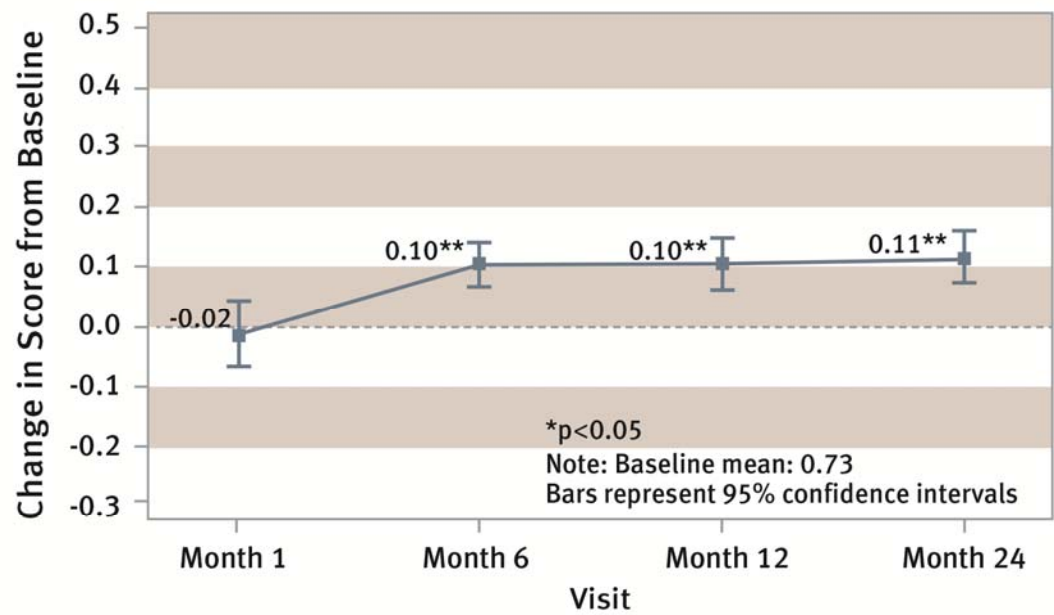
Supplemental Figure 2: Kaplan-Meier curve stratifying effect of postoperative infection on hernia recurrence (n at remaining risk = 9 and 6 for patients with infections evaluated at 12 and 24 months; n at remaining risk = 76 and 68 for patients without infection at 12 and 24 months, respectively).



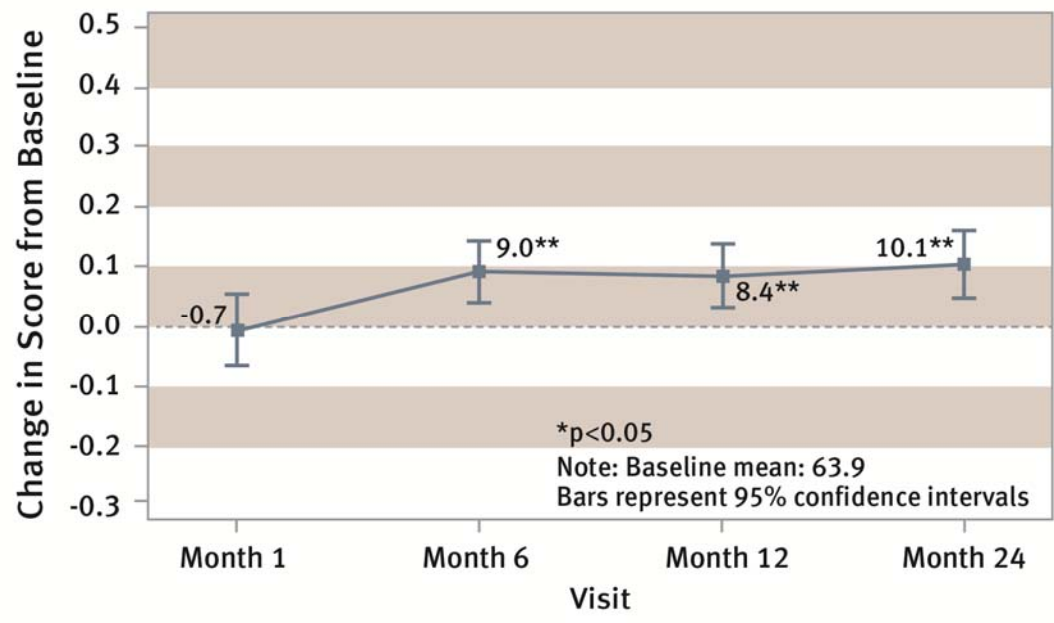
Supplemental Figure 3: Kaplan Meier stratified based on midline versus parastomal hernia recurrence (n at remaining risk = 7 and 2 for patients with midline hernia recurrence at 12 and 24 months, respectively; n at remaining risk = 0 for patients with parastomal hernia recurrence at 12 and 24 months).



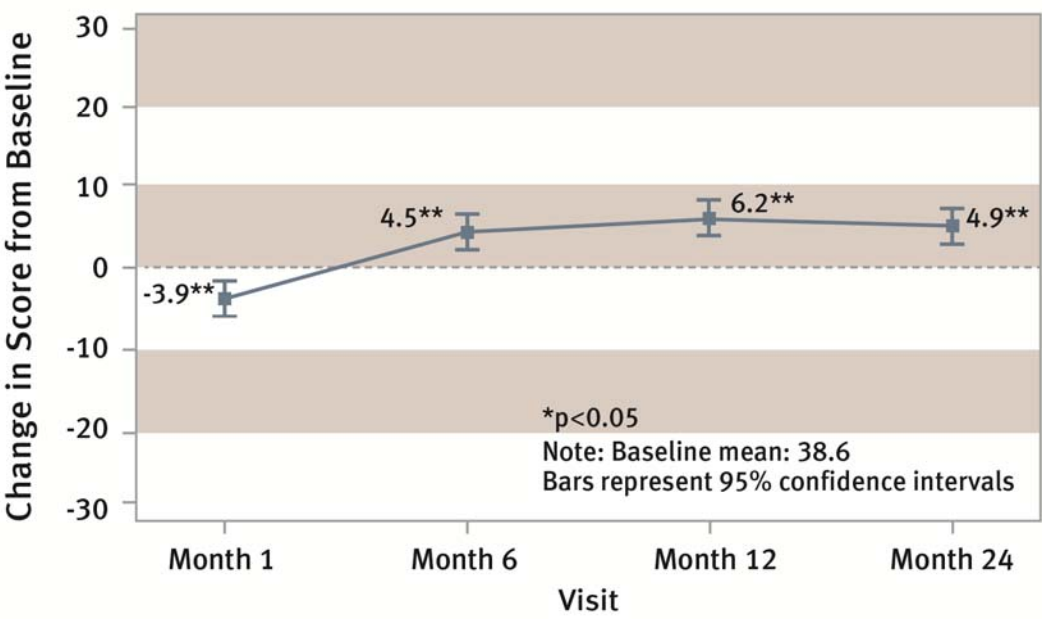
Supplemental Figure 4: Change in EQ5D Index Score from baseline (n = 89 and 84 for patients evaluated at 12 and 24 months, respectively).



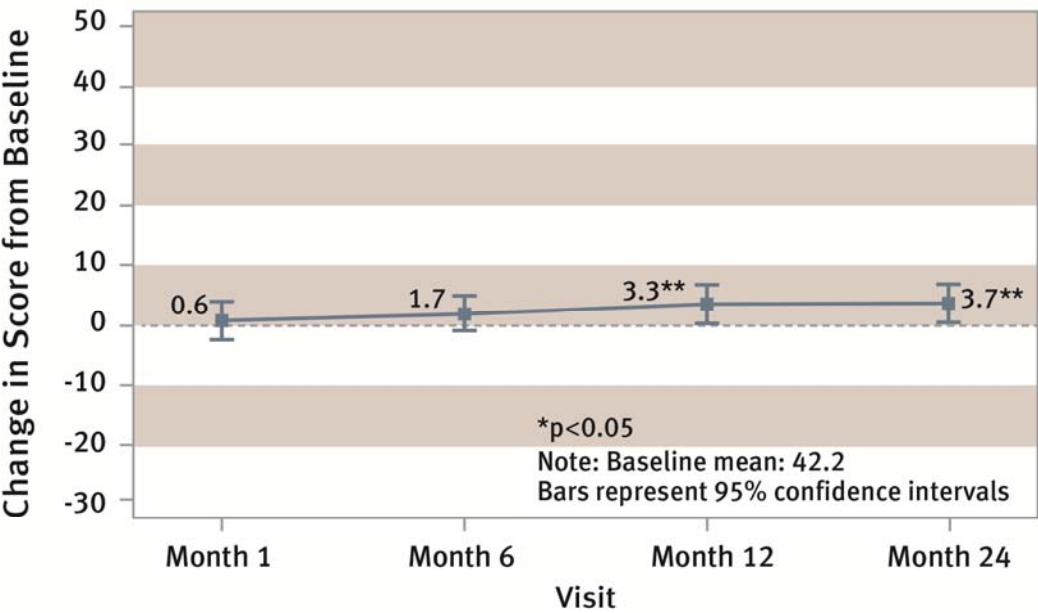
Supplemental Figure 5: EQ-5D VAS score from baseline (n = 90 and 83 for patients evaluated at 12 and 24 months, respectively).



Supplemental Figure 6: SF-12 Physical Score from Baseline (n = 65 and 59 for patients evaluated at 12 and 24 months, respectively).



Supplemental Figure 7: SF-12 Mental score from baseline (n = 65 and 59 for patients evaluated at 12 and 24 months, respectively).



Supplemental Table 1: Patient Reported Outcomes – Percentage Change in Scores from Baseline over 24 months

Variable, mean	Percentage Mean Change			
Variable, mean	Month 1	Month 6	Month 12	Month 24
EQ-5D Index	3%	14% *	14% *	15% *
EQ-5D VAS	-1%	14% *	13% *	16% *
SF-12 Physical	-10*	12% *	16% *	13% *
SF-12 Mental	1%	4%	8% *	9% *

*: $p < 0.05$

Abbreviations: N=total number of patients in each group; SF-12= Short Form 12 Health Survey; VAS=Visual Analog Scale.