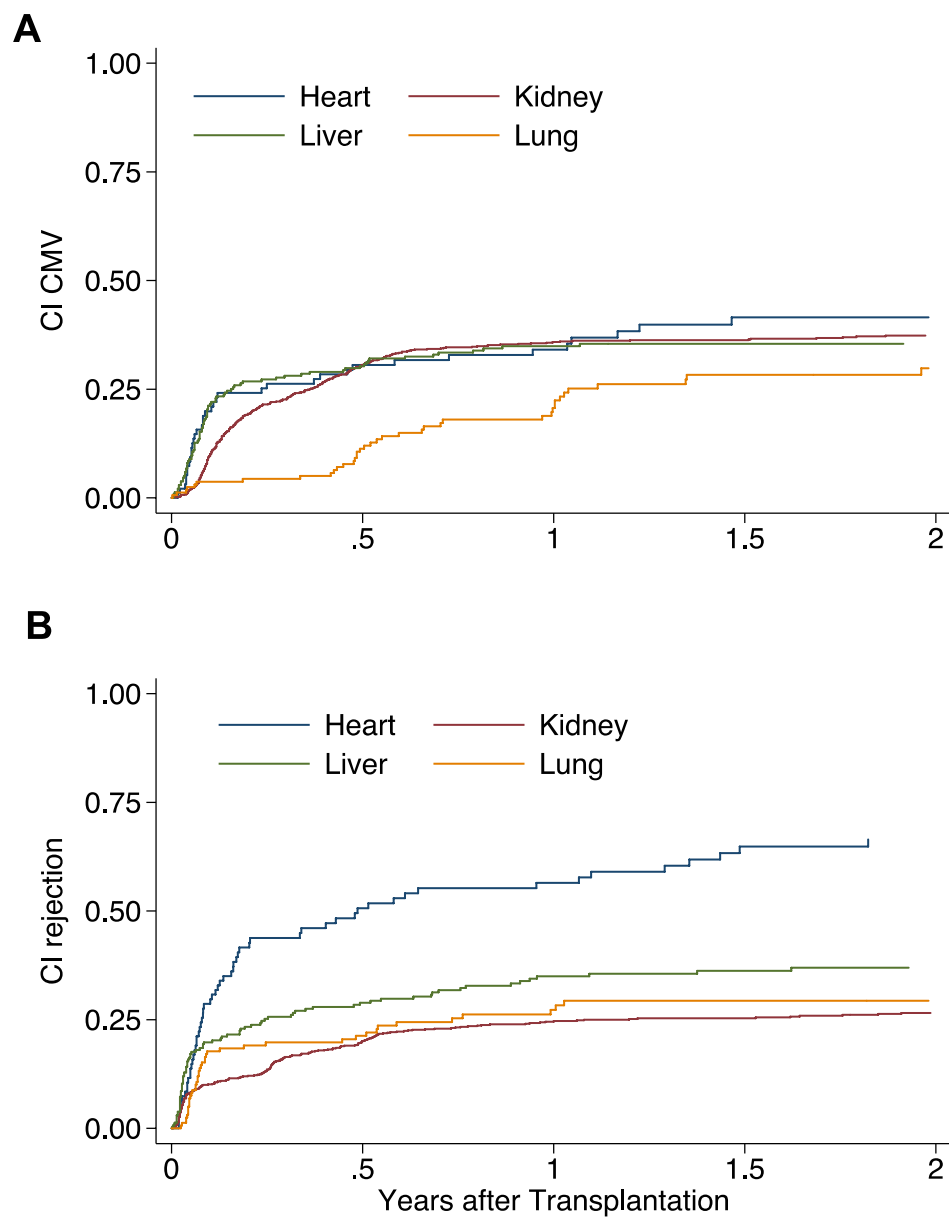
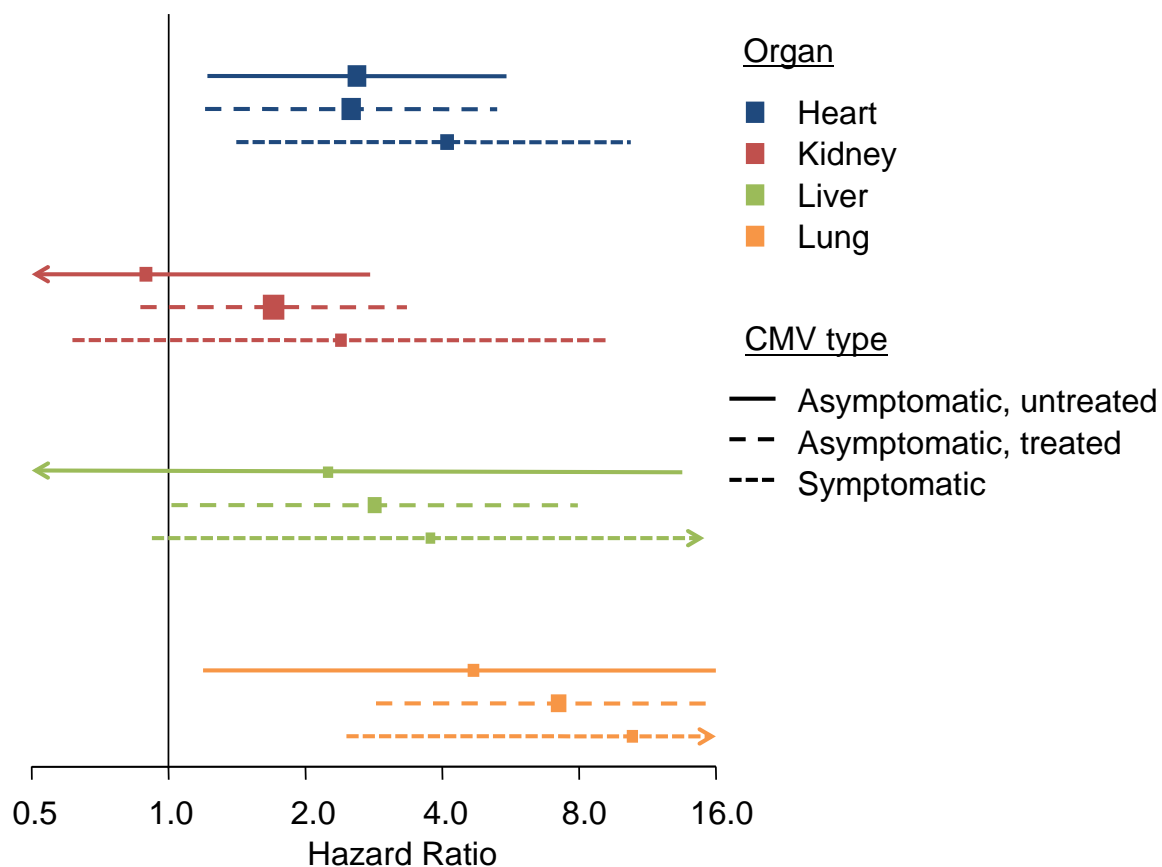


SDC Figure S1



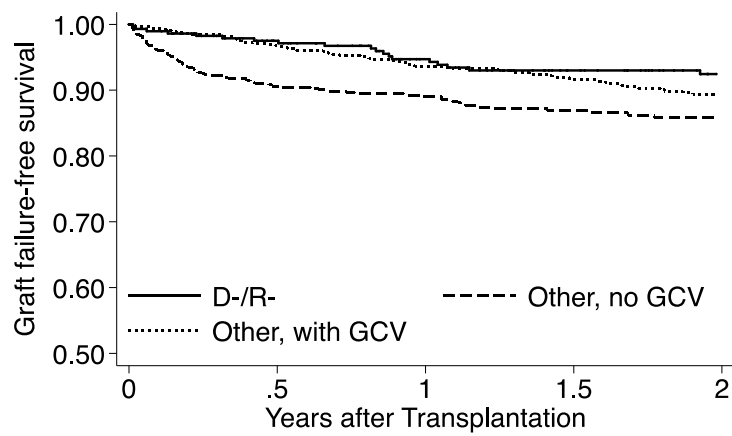
SDC Figure S1: Cumulative incidence of CMV replication (panel A) and of biopsy proven graft rejection (panel B) in 1414 recipients of single solid organ transplants grouped by the type of organ transplanted.

SDC Figure S2



SDC Figure S2: Forest plot of hazard ratios derived from time-dependent Cox models analyzing the impact of CMV replication on the incidence of biopsy proven graft rejection in recipients of heart (n=97), kidney (n=917), liver (n=237), or lung (n=163) allografts, if only the first episode of biopsy proven rejection is considered. Cox models included induction and maintenance immunosuppression, number of HLA mismatched between recipient and graft.

SDC Figure S3



SDC Figure S3: Survival free of graft failure in D-/R- allografts (solid line, n=278), and in non-D-/R- allografts receiving (dotted line, n=555) or not (dashed line, n=560) valganciclovir prophylaxis (p=0.11).