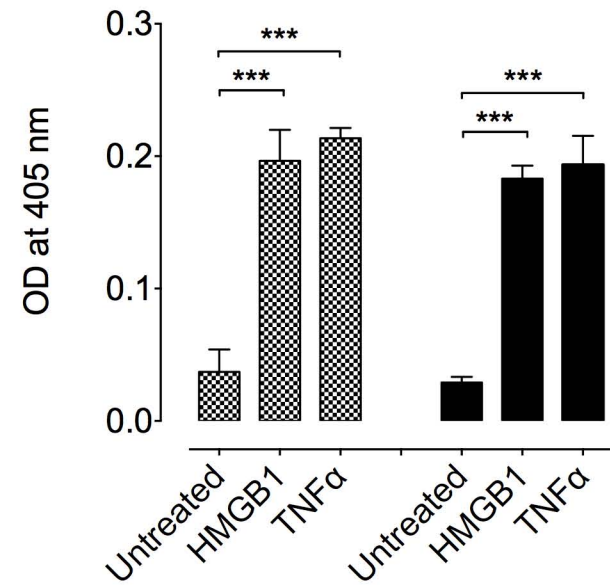


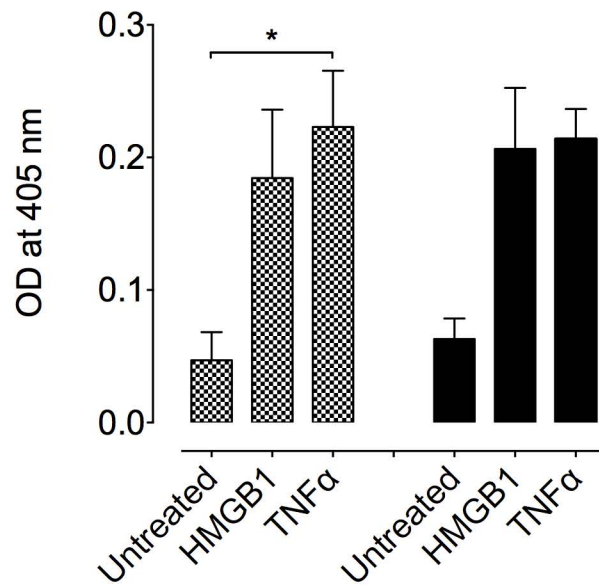
A

E-selectin



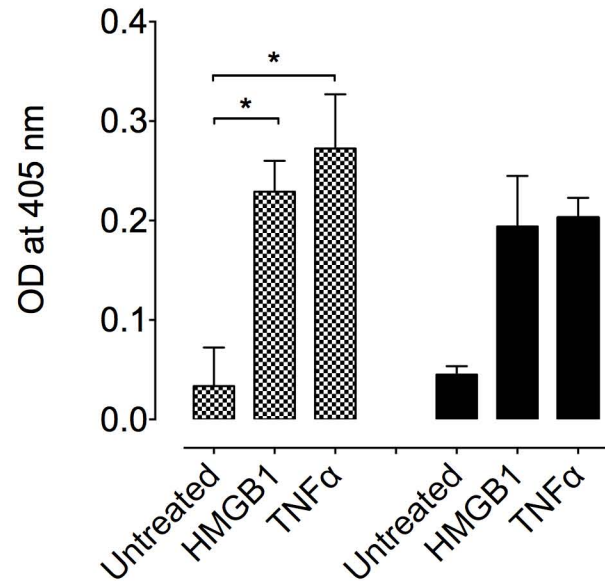
B

VCAM-1



C

ICAM-1



hTBM PAEC

GalTKO.hCD46.hTBM

Figure S1, SDC. Expression of cell surface adhesion molecules on WT PAEC over 24 hours following incubation with HMGB1 or hTNF α . WT PAEC were stimulated with (A-C) indicated concentrations of HMGB1, hTNF α or in combination for 16h or (D-F) as indicated time points. The surface expression of (A and D) E-selectin, (B and E) VCAM-1, and (C and F) ICAM-1 on WT PAEC was measured by a cell-based ELISA. Shown are mean values \pm standard deviations of at least 3 independent experiments. Significance was tested using 1-way ANOVA with Bonferroni correction (* $p < 0.05$, ** $p < 0.01$, *** $p < 0.001$, **** $p < 0.0001$).

Figure S2, SDC. Expression of HMGB1- or hTNF α -induced cell surface adhesion molecules on hTBM and GalTKO/hCD46/hTBM PAEC. (A-C) hTBM or GalTKO/hCD46/hTBM PAEC were treated with HMGB1 (100 ng/ml) or hTNF α (10 ng/ml) for 16h, and the cell surface expression of (A) E-selectin, (B) VCAM-1, and (C) ICAM-1 was measured by a cell-based ELISA. Statistical analysis was carried out by 1-way ANOVA testing with Bonferroni correction. Data are mean \pm SD, * $p < 0.05$, ** $p < 0.01$, *** $p < 0.001$, **** $p < 0.0001$; $n = 3$ independent experiments.