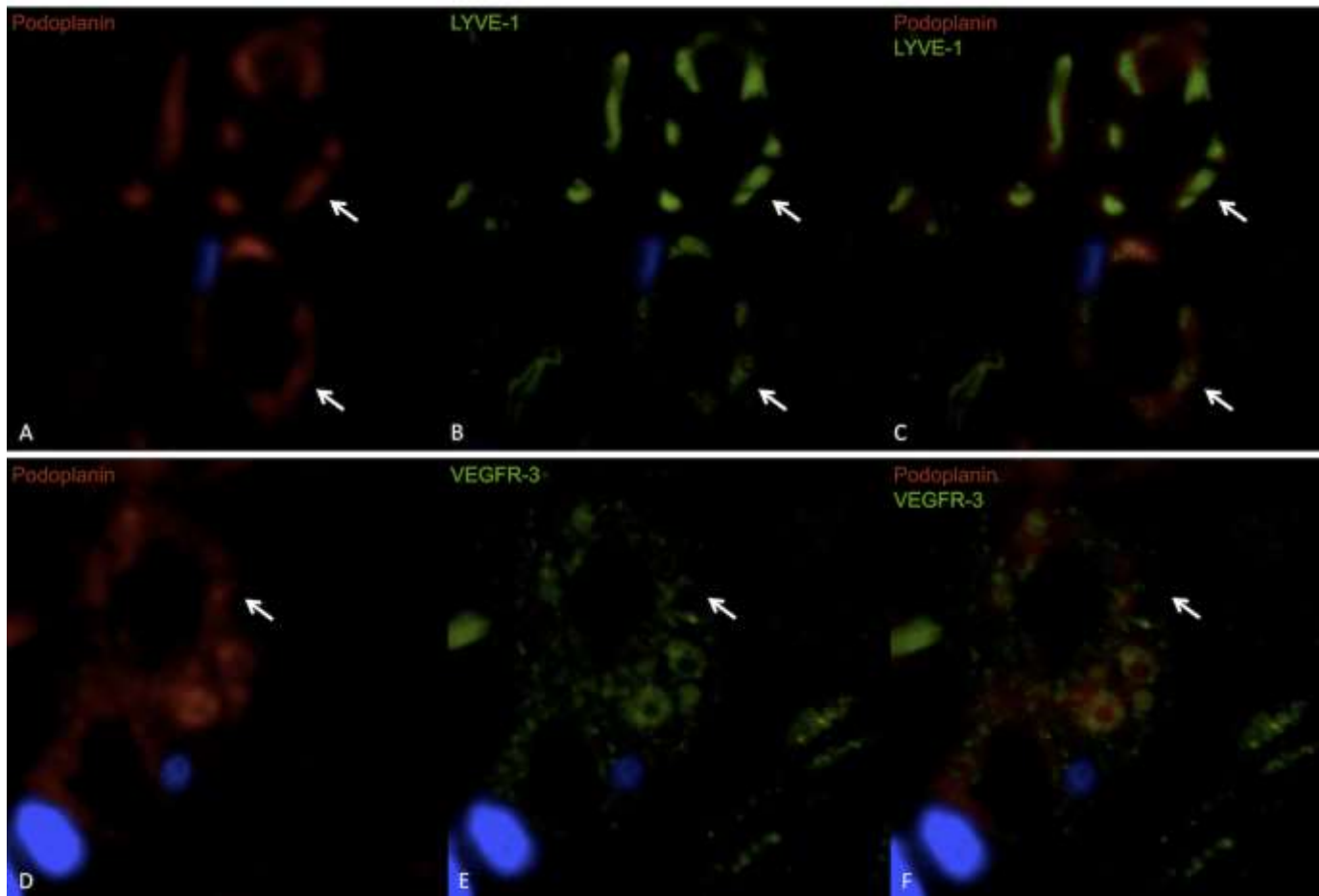
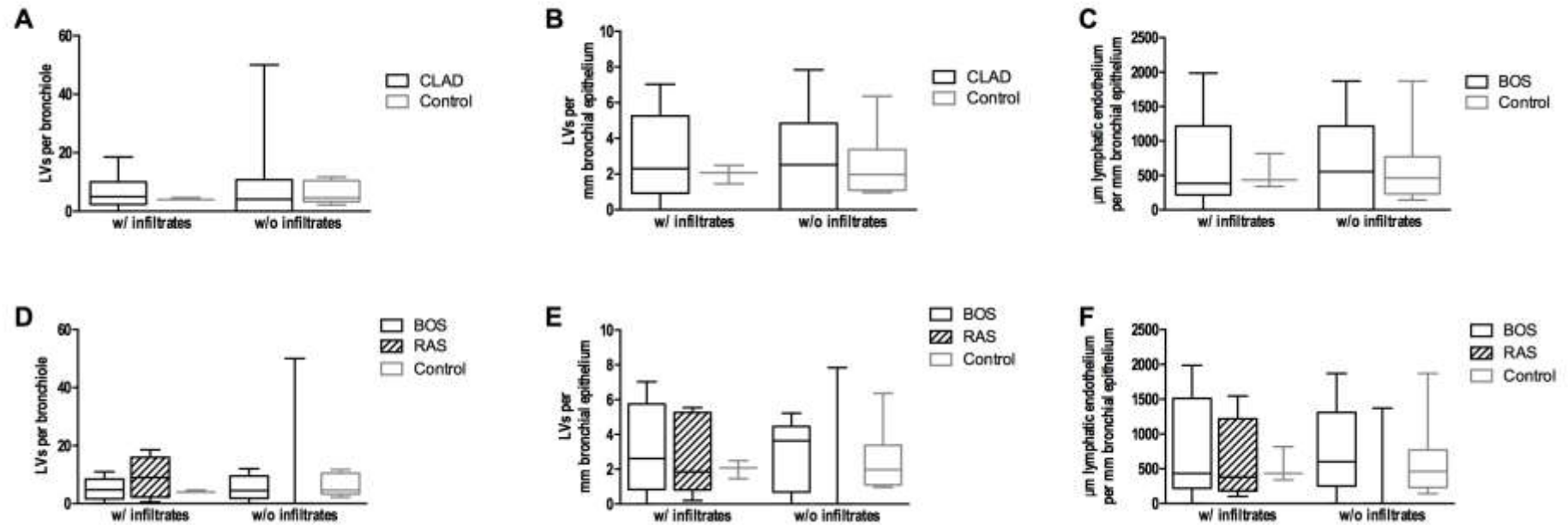


SDC, Figure 1



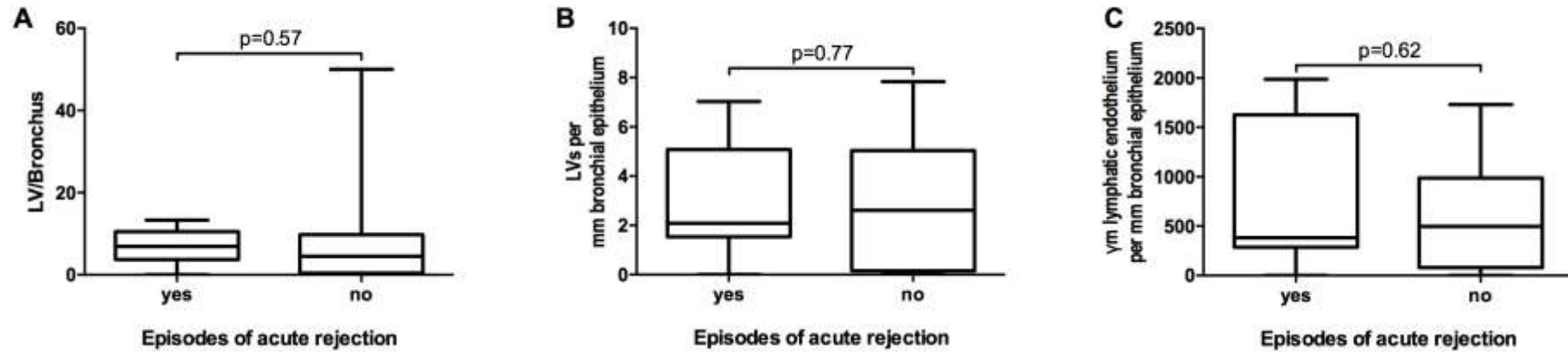
SDC, Figure 1: Immunofluorescence co-stainings of lymphatic vessels (arrows). Podoplanin and LYVE-1 (A-C) or VEGFR-3 (D-E). red = podoplanin, green = LYVE-1/VEGFR-3, blue = nuclei

SDC, Figure 2



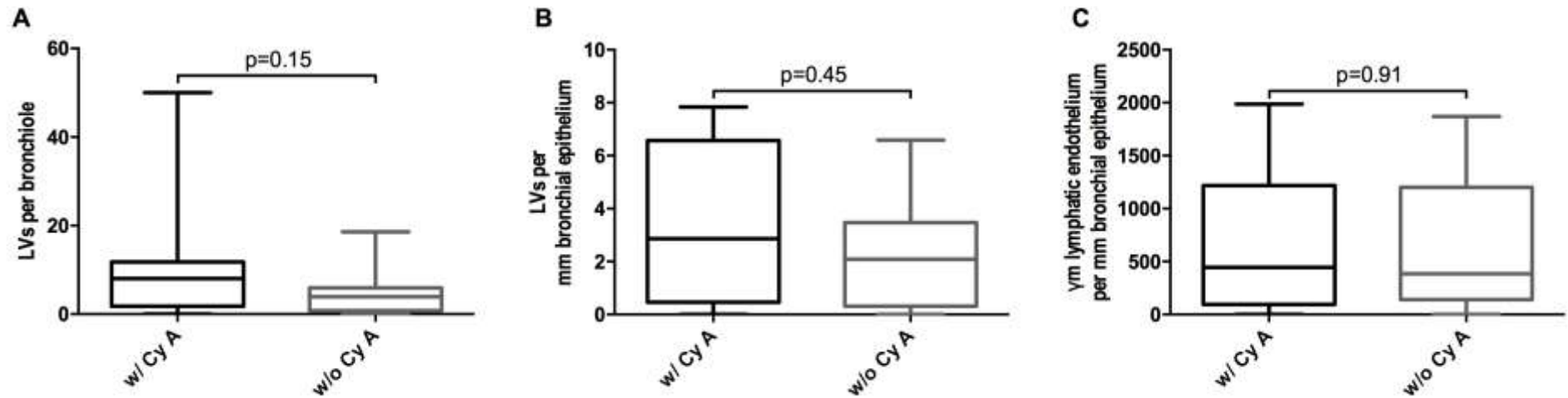
SDC, Figure 2: Tissue samples were divided in samples with and ones without cellular immunological infiltrates. No difference in lymphangiogenesis expressed as LVs per bronchiole (A, D), LVs per mm bronchial epithelium (B, E) or μm lymphatic endothelium per mm bronchial epithelium (C, F) was found.

SDC, Figure 3



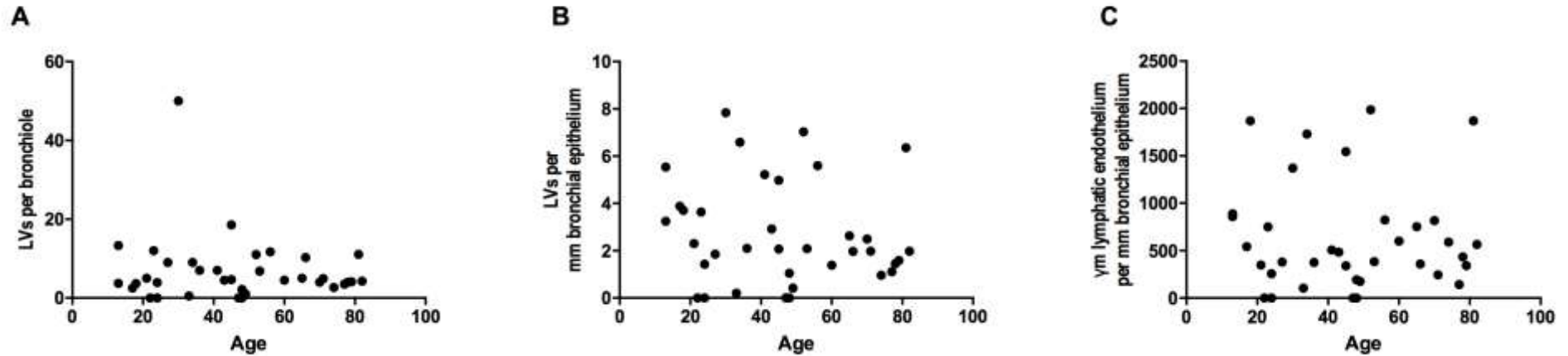
SDC, Figure 3: No differences in patients with or without previous episodes of acute rejection ($\geq A2$) in LVD expressed as LVs per bronchiole ($p=0.57$) (A), LVs per mm bronchial epithelium ($p=0.77$) (B) or μm lymphatic endothelium per mm bronchial epithelium ($p=0.62$) (C) was observed.

SDC, Figure 4



SDC, Figure 4: No difference between patients receiving immunosuppression with Cy A or without Cy A could be seen in LVs per bronchiole (A), LVs per mm bronchial epithelium (B) or μ m lymphatic endothelium per mm bronchial epithelium (C).

SDC, Figure 5



SDC, Figure 5: Age is not associated with lymphangiogenesis expressed as LVs per bronchiole ($r=0.03$, $p=0.88$) (A), LVs per mm bronchial epithelium ($r=-0.17$, $p=0.31$) (B) or μm lymphatic endothelium per mm bronchial epithelium ($r=-0.03$, $p=0.88$) (C).