

SUPPLEMENTAL DIGITAL CONTENT (SDC)

Table S1. Demographics of pediatric recipients of living donor kidney grafts

Characteristic	Missing (%)	HLA A+B+DR Mismatches (MM)			P
		0 MM n = 226	1 – 3 MM n = 3,037	4 – 6 MM n = 364	
Geographical region	–				<0.001
Europe		66 (5%)	1,172 (90%)	59 (5%)	
North America		13 (5%)	218 (79%)	46 (17%)	
Latin America		17 (4%)	368 (88%)	31 (7%)	
Australia/NZ		11 (3%)	290 (85%)	40 (12%)	
Asia/Africa		119 (9%)	989 (76%)	188 (15%)	
Transplant year	–				0.024
2000 – 2004		64 (5%)	988 (83%)	137 (12%)	
2005 – 2009		79 (6%)	1,112 (84%)	137 (10%)	
2010 – 2015		83 (7%)	937 (84%)	90 (8%)	
Recipient sex	–				0.11
Female		77 (6%)	1,146 (83%)	154 (11%)	
Male		149 (7%)	1,891 (84%)	210 (9%)	
Recipient age (years)	–				<0.001
0 – 5		25 (4%)	490 (84%)	68 (12%)	
6 – 11		55 (6%)	793 (85%)	80 (9%)	
12 – 17		146 (7%)	1,754 (83%)	216 (10%)	
Time on dialysis (months)	16%				0.21
≤ 12		147 (7%)	1,708 (82%)	219 (11%)	
13 – 24		31 (6%)	422 (81%)	66 (13%)	
> 24		22 (5%)	386 (83%)	57 (12%)	
Donor age (years)	–				<0.001
18 – 49		213 (7%)	2,743 (84%)	301 (9%)	
50 – 59		10 (3%)	258 (84%)	40 (13%)	
≥ 60		3 (5%)	36 (59%)	23 (37%)	
Initial immunosuppression	4%				<0.001
CsA + AZA		83 (12%)	532 (78%)	64 (9%)	
CsA + MPA		41 (5%)	637 (81%)	104 (13%)	
TAC + MPA		60 (4%)	1,189 (85%)	145 (10%)	
Other		31 (5%)	551 (88%)	44 (7%)	
Relationship	–				<0.001
Parent		142 (5%)	2,443 (93%)	53 (2%)	
Sibling		52 (26%)	116 (58%)	31 (16%)	
Other related		26 (5%)	359 (71%)	118 (23%)	
Unrelated		6 (2%)	119 (41%)	162 (56%)	

Figure S1. Influence of HLA-A+B+DR matching on graft survival of first pediatric kidney transplants from deceased donors performed 2000–2015 (log rank P value with trend)

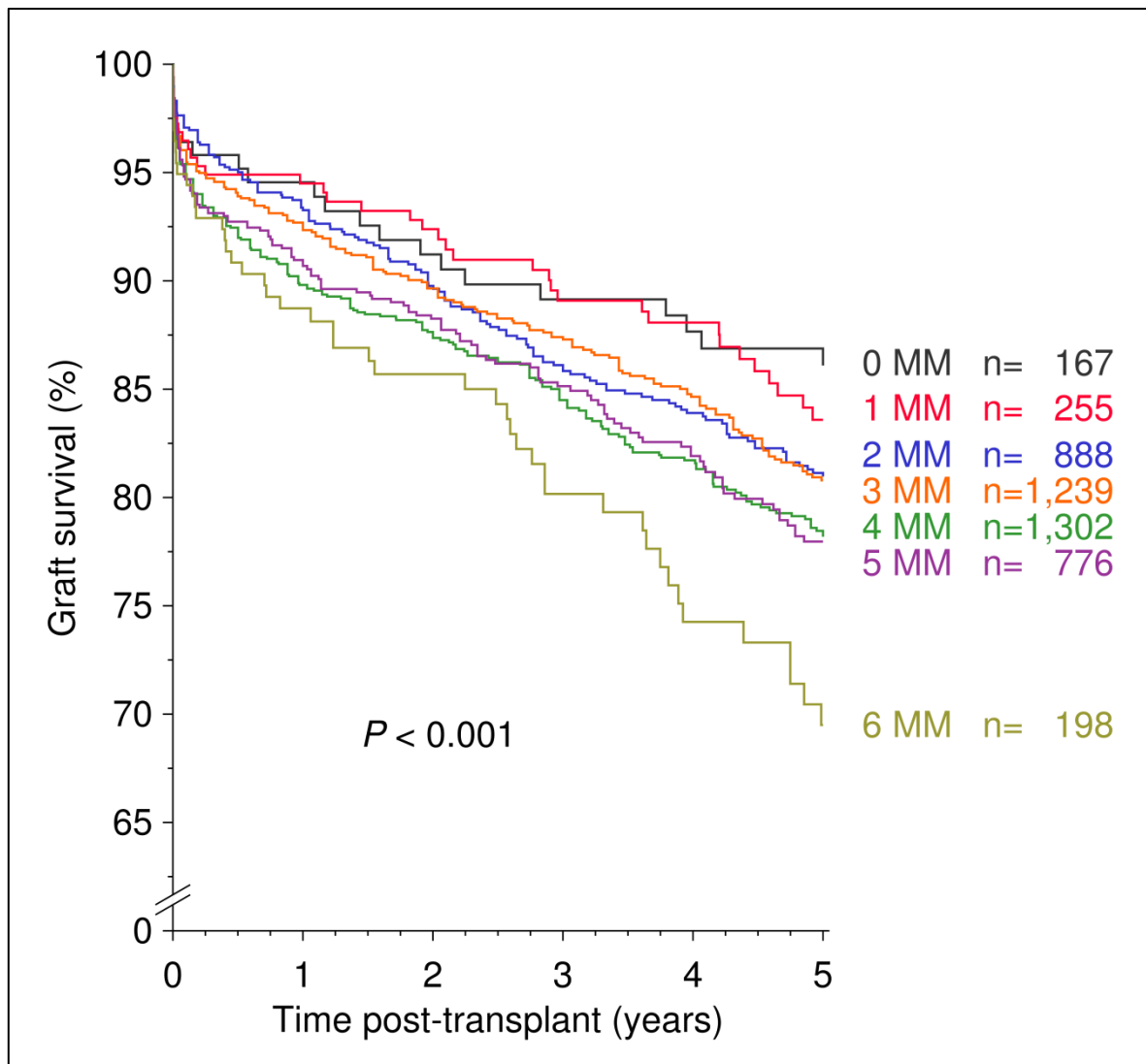


Figure S2. 10-year death censored graft survival (A) and patient survival (B) of first pediatric kidney transplants. Comparison of well-matched deceased donor grafts (0–1 MM DD) with poorly (4–6 MM LD) matched living donor grafts. P values for log rank test of Kaplan-Meier analysis.

