

Supplementary Digital Content

Figure S1: All cause graft survival ('transplant survival'), including death with a functioning graft, of DBD and DCD donor kidneys transplanted through the NKAS only, and those transplanted after offering through the KFTS.

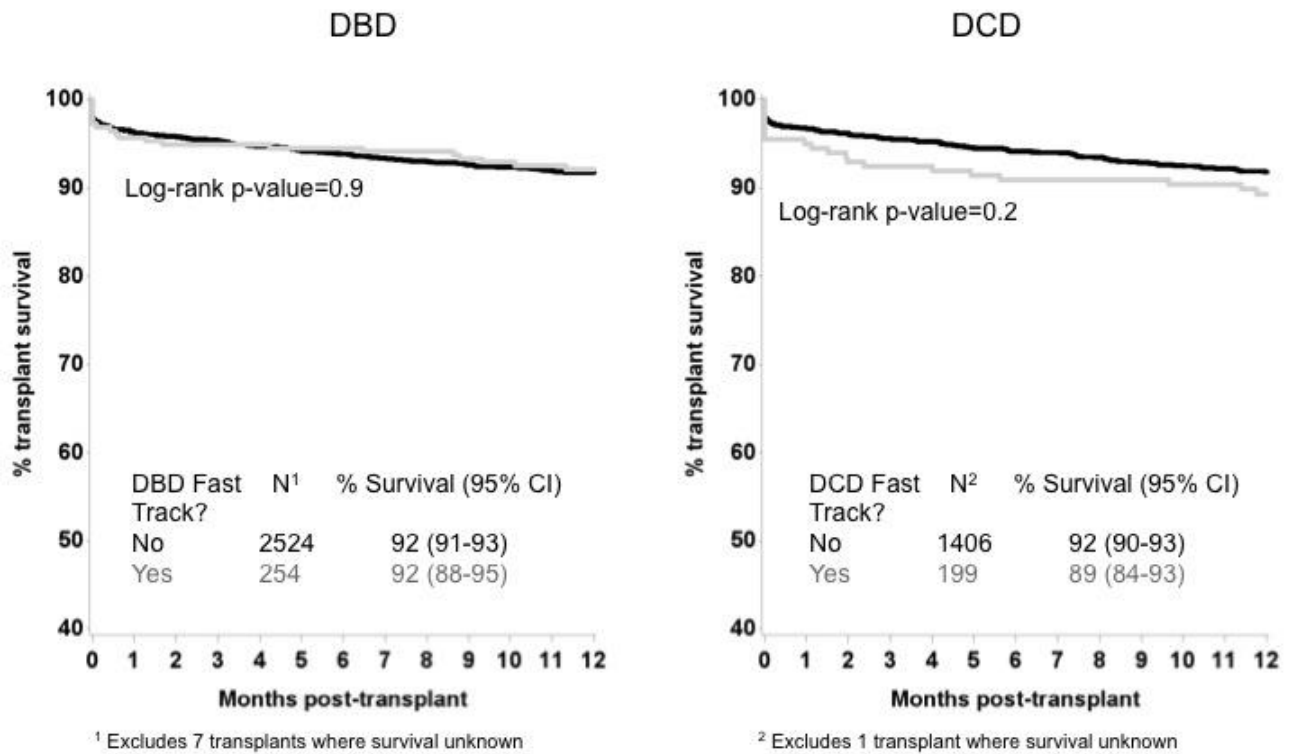


Figure S2: Discard rate and transplant type (single or dual transplant) of procured DBD donor kidneys in the UK, 2006-2015. Numbers are labelled on each bar.

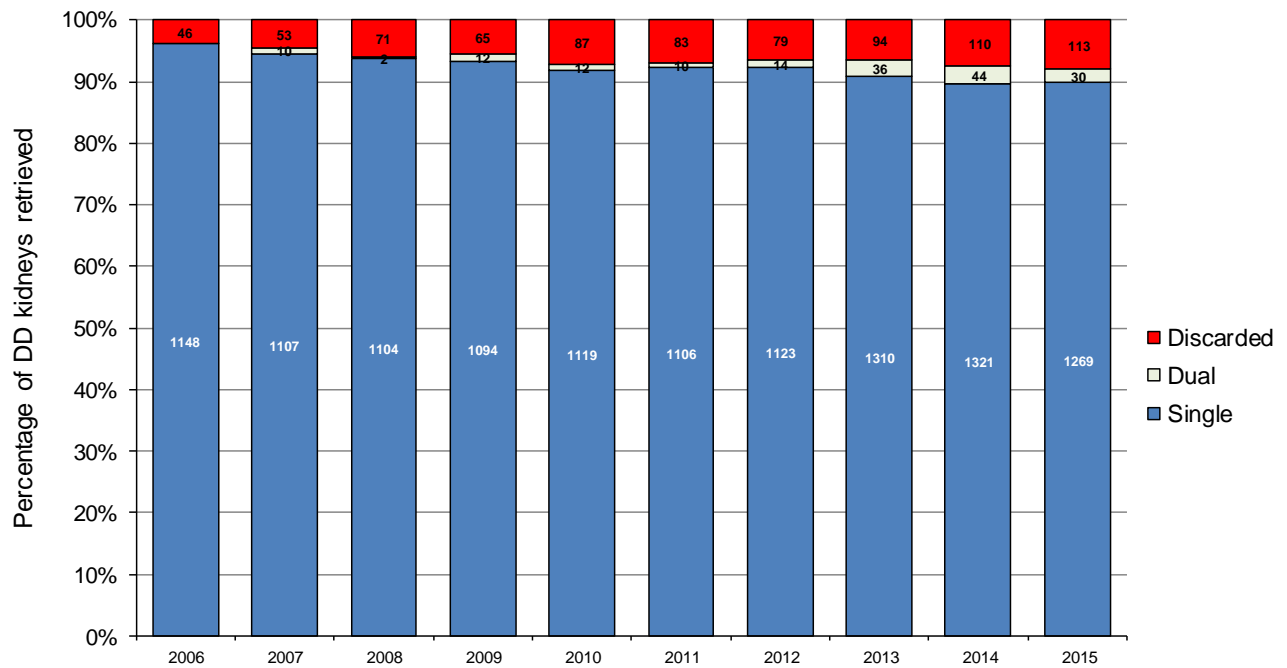


Figure S3: Discard rate and transplant type (single or dual transplant) of procured DCD donor kidneys in the UK, 2006-2015. Numbers are labelled on each bar.

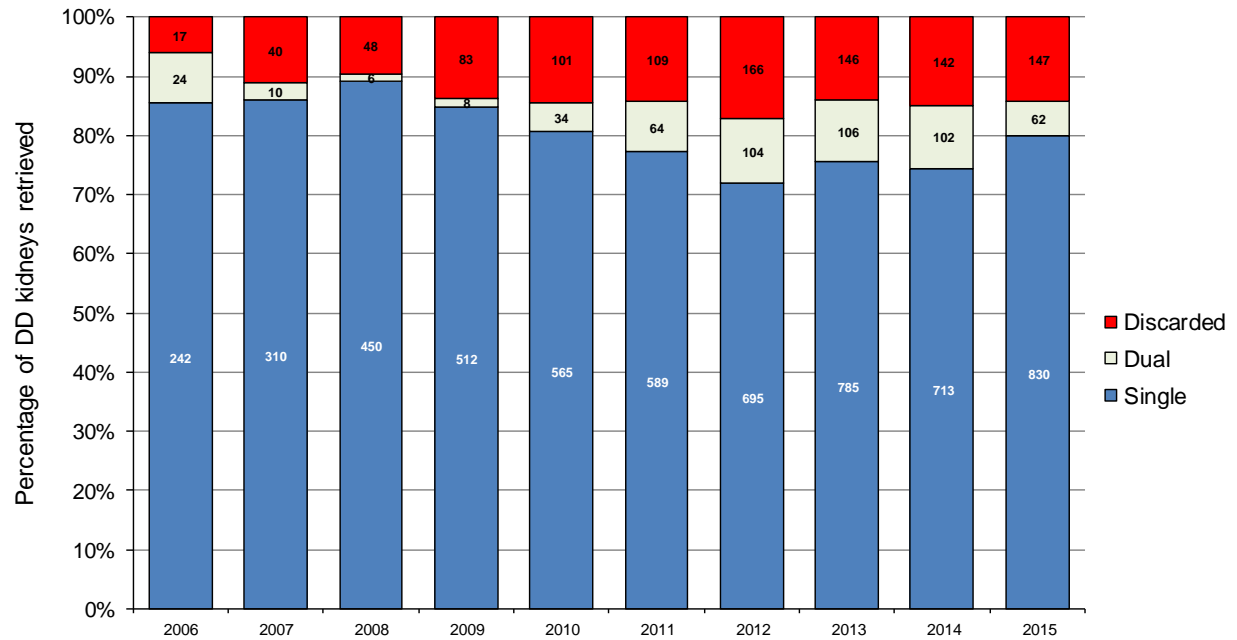


Figure S4: Proportion of 'high risk' (UKKDRI >1.35) deceased donor kidneys procured in the UK, 2006-2015. Numbers are labelled on each bar.

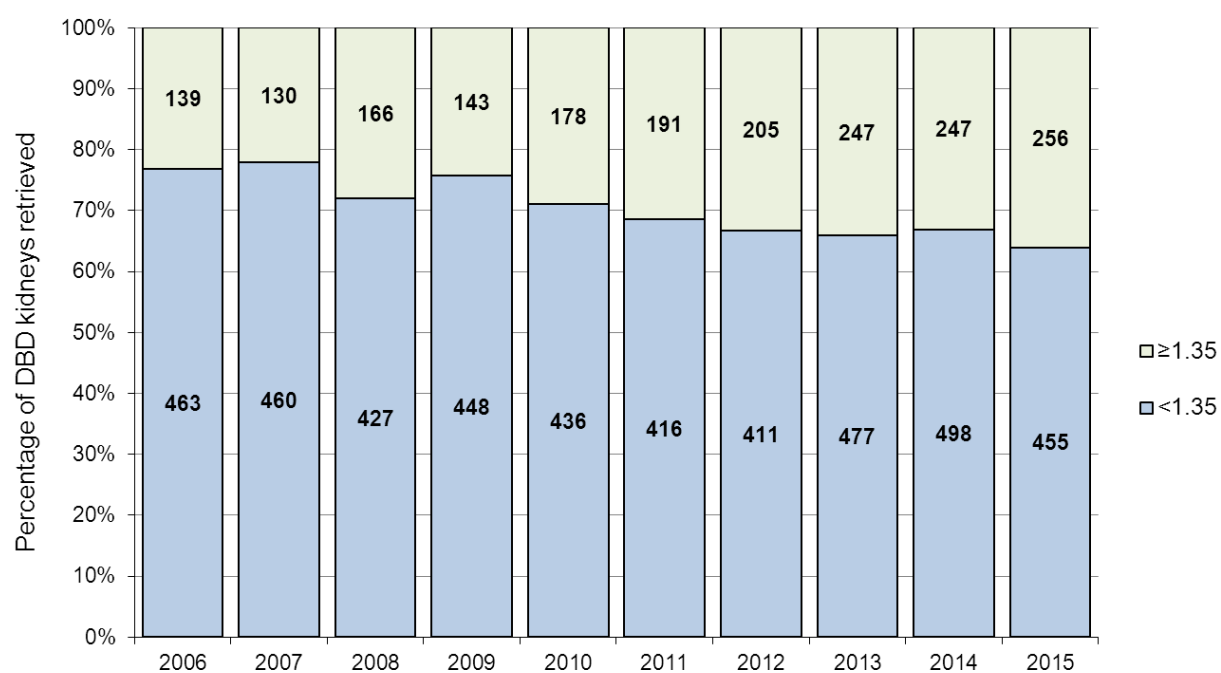


Figure S5: Donor risk by UKKDRI of DBD donor kidney-only transplants in the UK, 2006-2015. Data expressed as median (IQR).

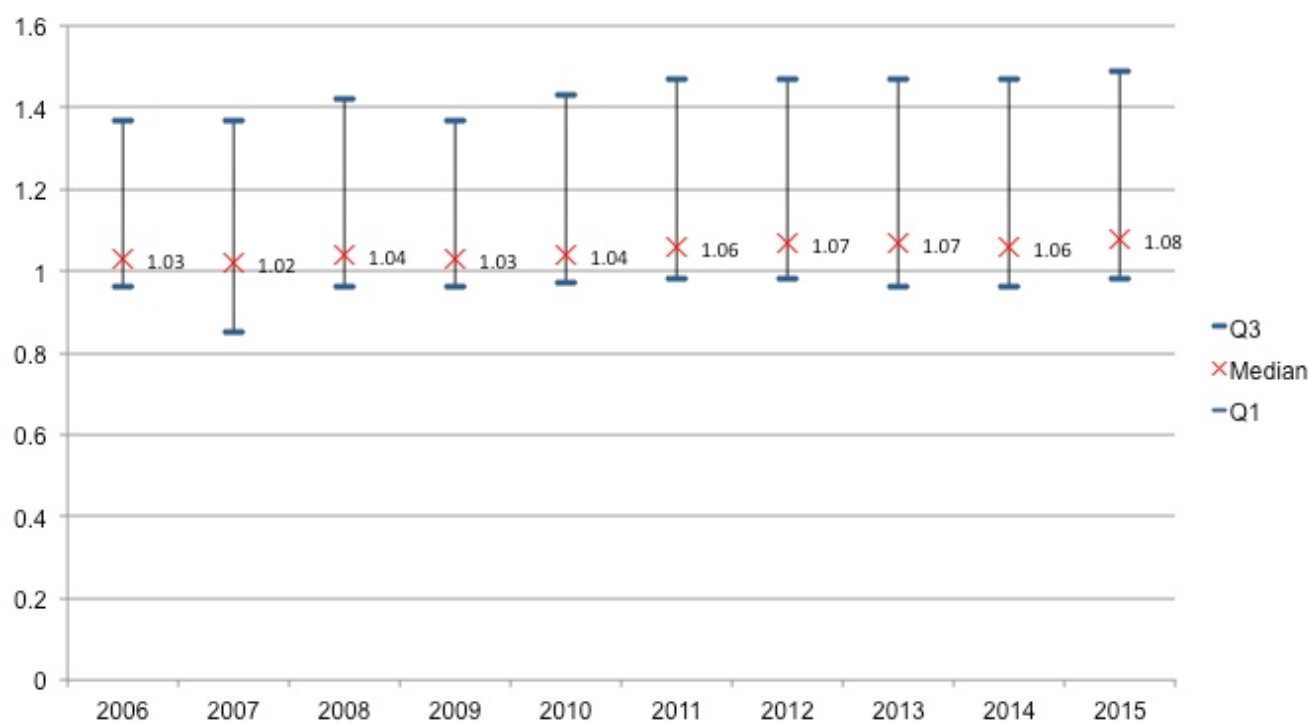


Figure S6: Donor risk by UKKDRI of DCD donor kidney-only transplants in the UK, 2006-2015. Data expressed as median (IQR).

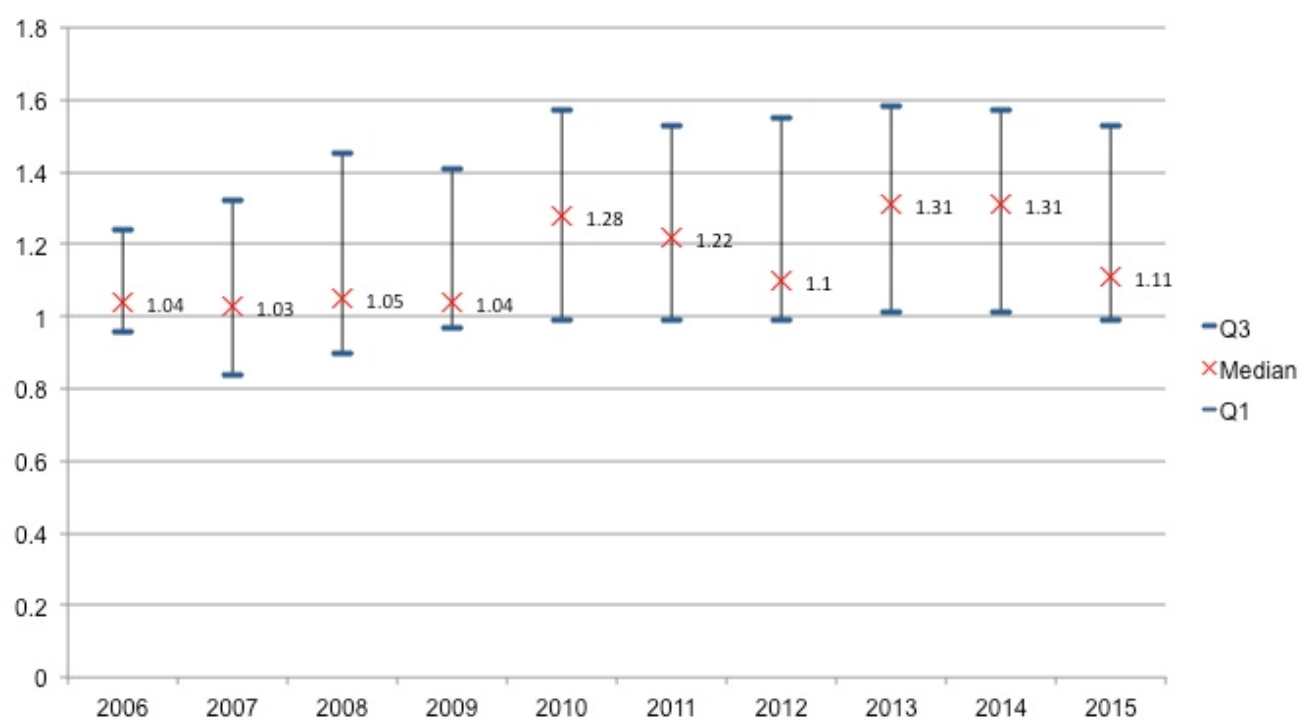


Figure S7: Donor risk by UKKDRI of discarded DBD donor kidneys in the UK, 2006-2015. Data expressed as median (IQR).

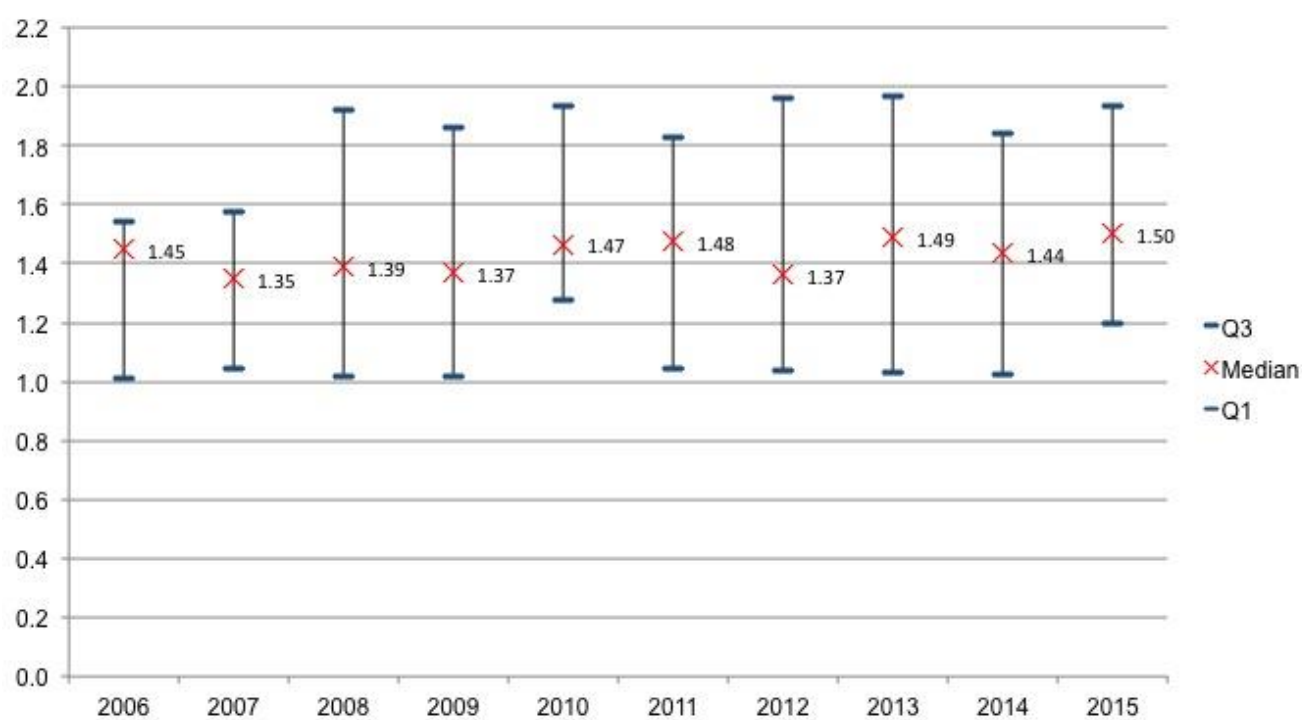


Figure S8: Donor risk by UKKDRI of discarded DCD donor kidneys in the UK, 2006-2015. Data expressed as median (IQR).

