

Figure S1: The graft survival probabilities for CC modified (ie, CC minus patients with BMI>30), CC with BMI>30 and NASH. There were insignificant differences between the 3 groups (p-value=0.19).

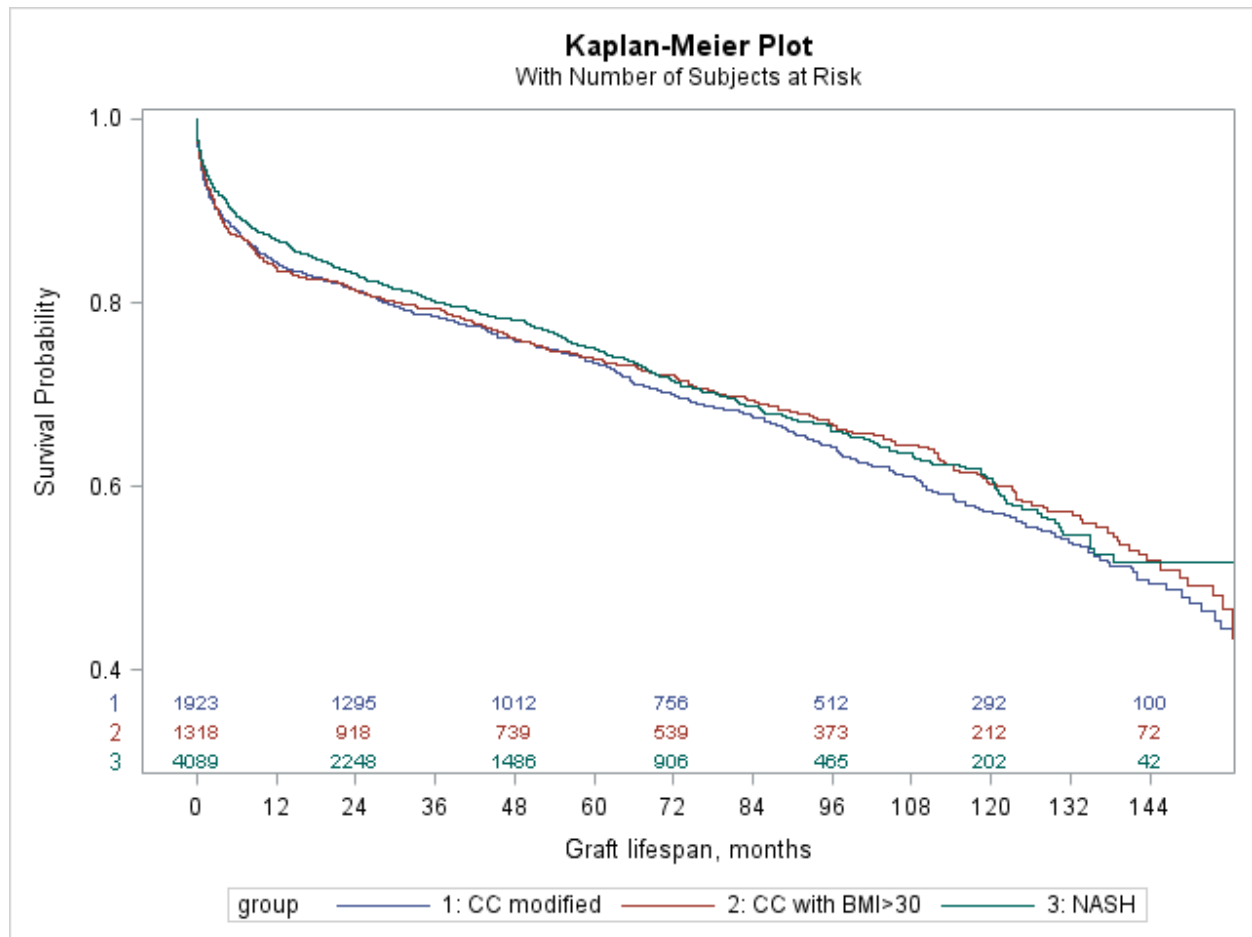


Figure S2: The patient survival probabilities for CC modified (ie, CC minus patients with BMI>30), CC with BMI>30 and NASH. There were insignificant differences between the 3 groups (p-value=0.55).

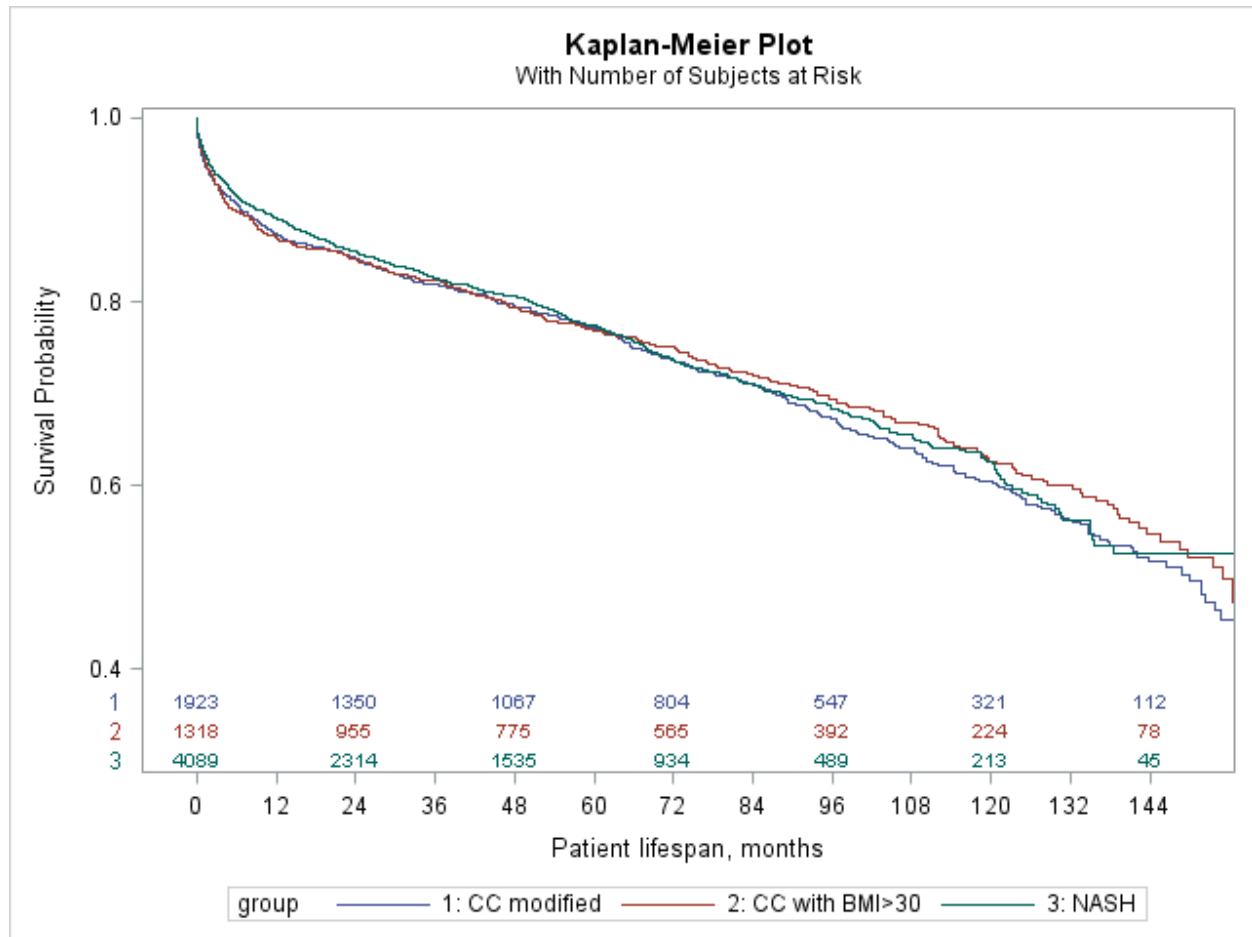


Figure S3: The graft survival probability of NASH and CC during 2012-2016. There were insignificant differences between CC and NASH (p-value=0.3).

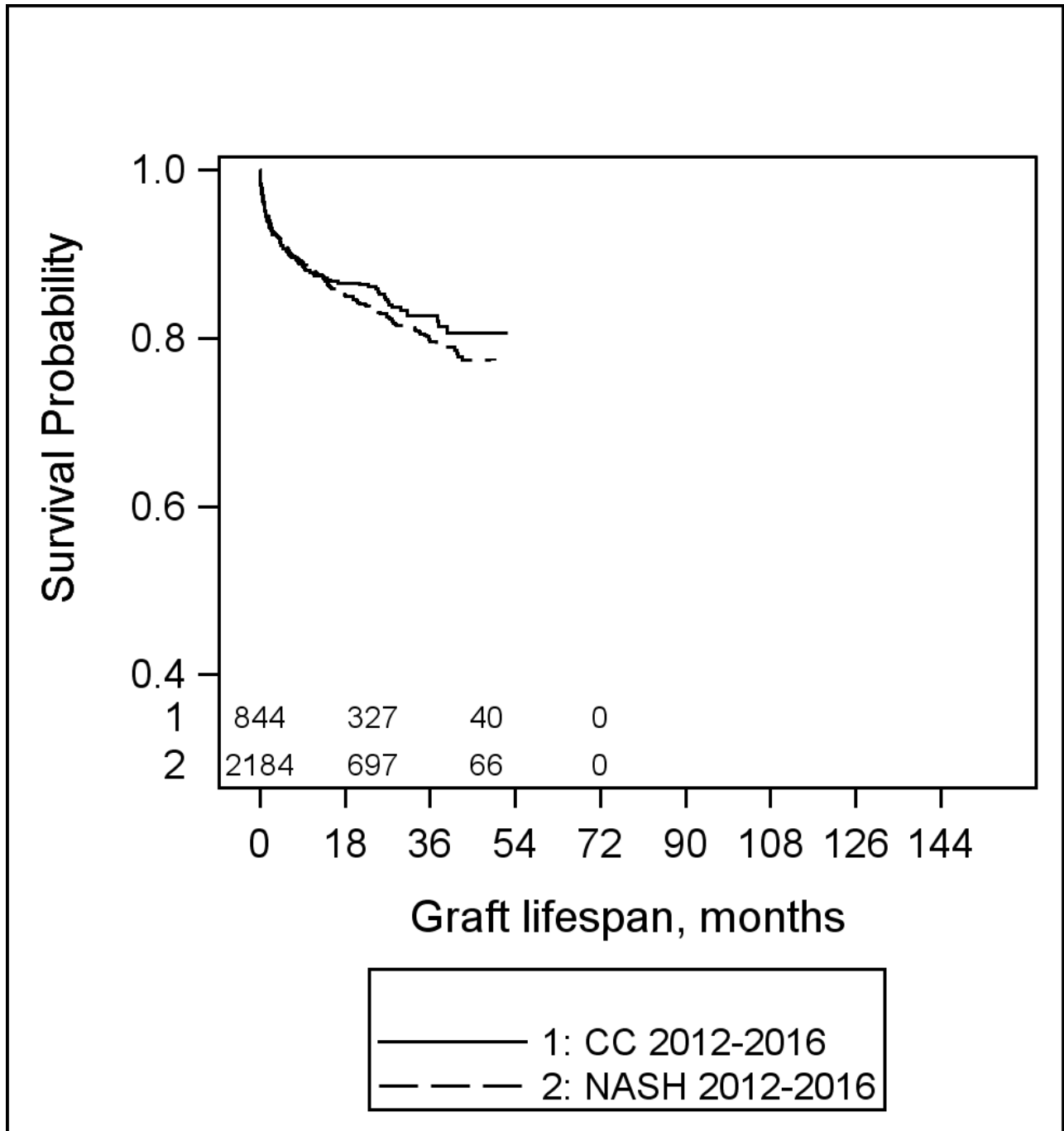


Figure S4: The patient survival probability of NASH and NASH during 2012-2016. There were insignificant differences between CC and NASH (p-value=0.4).

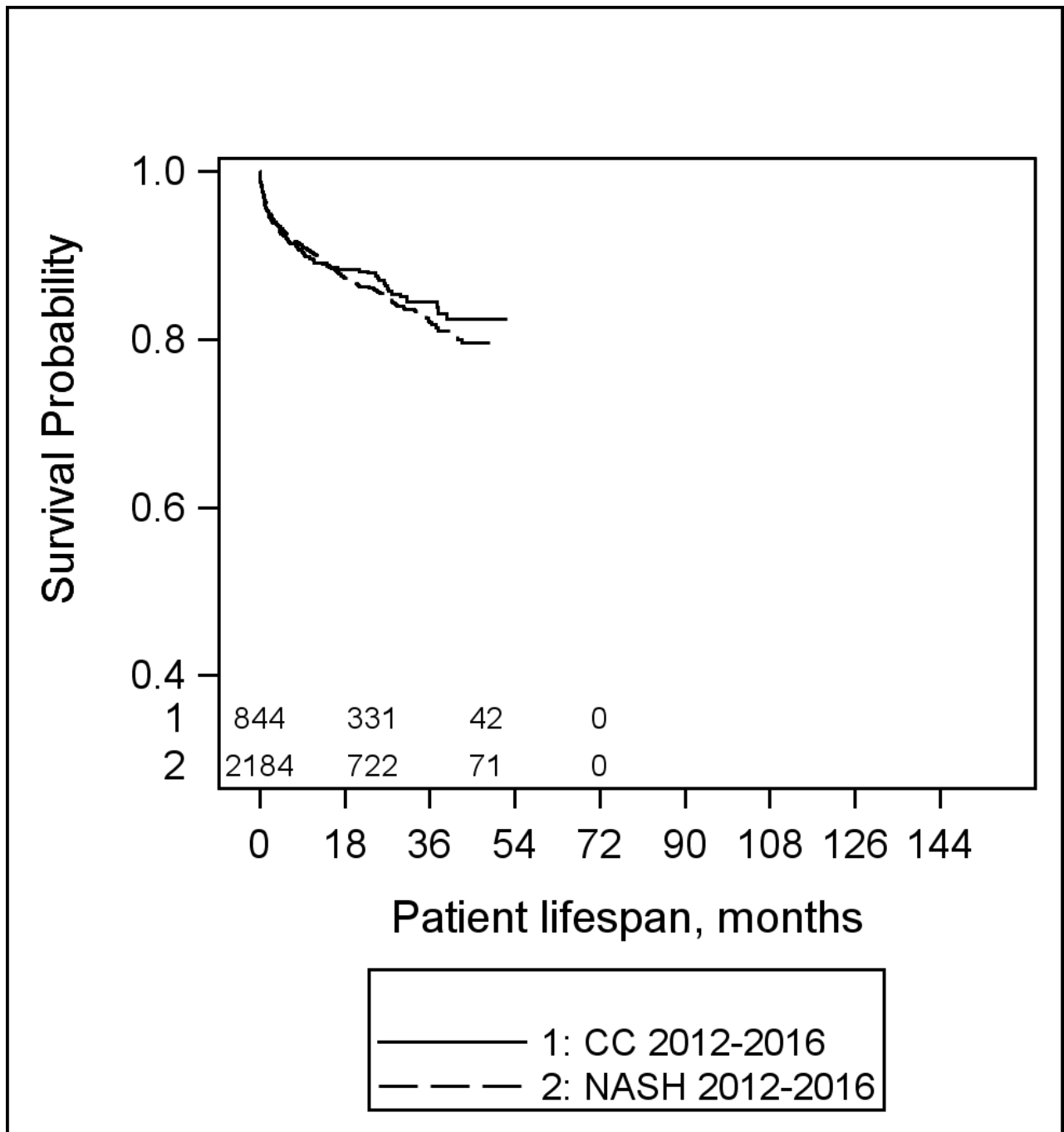


Table S1: Graft and Patient Survival probabilities for CC modified (ie, CC minus patients with BMI>30), CC with BMI>30 and NASH.

Time since transplant	Graft Survival				Patient Survival			
	CC	CC with BMI ≤30	CC with BMI>30	NASH	CC	CC with BMI ≤30	CC with BMI>30	NASH
<i>N</i>	<i>3241</i>	<i>1923</i>	<i>1318</i>	<i>4089</i>	<i>3241</i>	<i>1923</i>	<i>1318</i>	<i>4089</i>
30 days	0.94	0.94	0.94	0.95	0.96	0.95	0.96	0.97
1 year	0.84	0.84	0.84	0.87	0.87	0.87	0.87	0.89
2 years	0.82	0.82	0.82	0.83	0.85	0.85	0.85	0.86
3 years	0.79	0.79	0.79	0.80	0.82	0.82	0.82	0.83
5 years	0.74	0.73	0.74	0.75	0.77	0.77	0.77	0.77
10 years	0.58	0.57	0.6	0.61	0.61	0.6	0.63	0.63