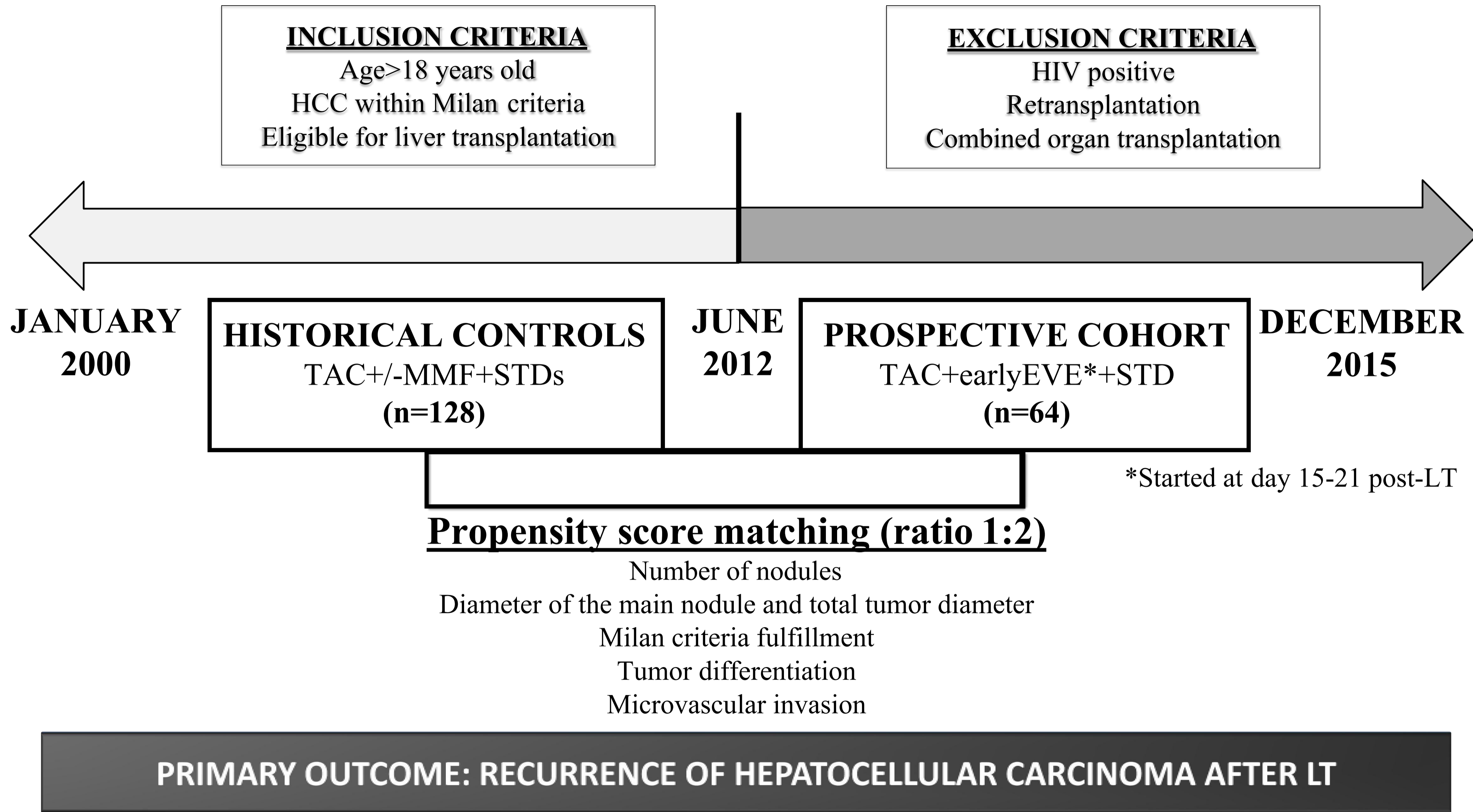


Figure S1



Abbreviations. TAC: tacrolimus; MMF: mycophenolate mofetil; STDs: corticosteroids; EVE: everolimus; LT: Liver Transplantation

Figure S1: Study design overview. A prospective cohort of patients with hepatocellular carcinoma undergoing liver transplantation who received early everolimus as part of the immunosuppression protocol (n=64) was compared with an historical cohort (n=128) -matched by histological features of hepatocellular carcinoma- who did not receive everolimus. The primary outcome was tumor recurrence after liver transplantation.

Figure S2

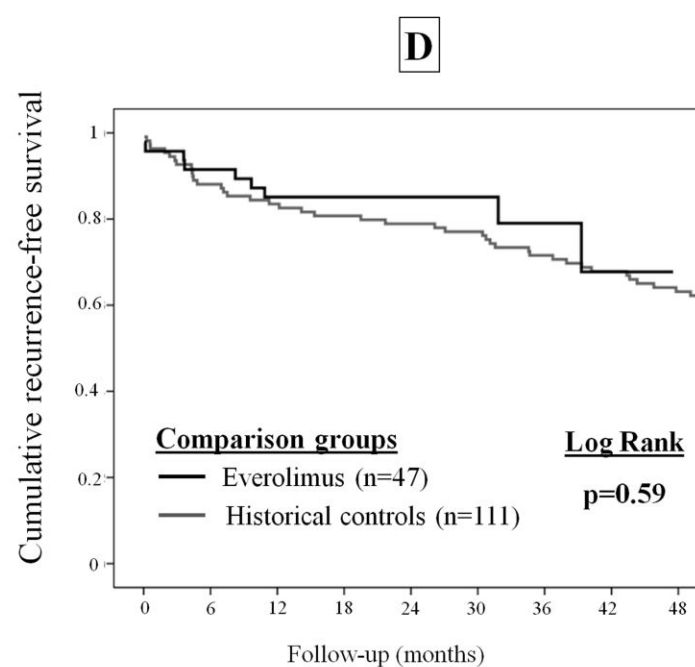
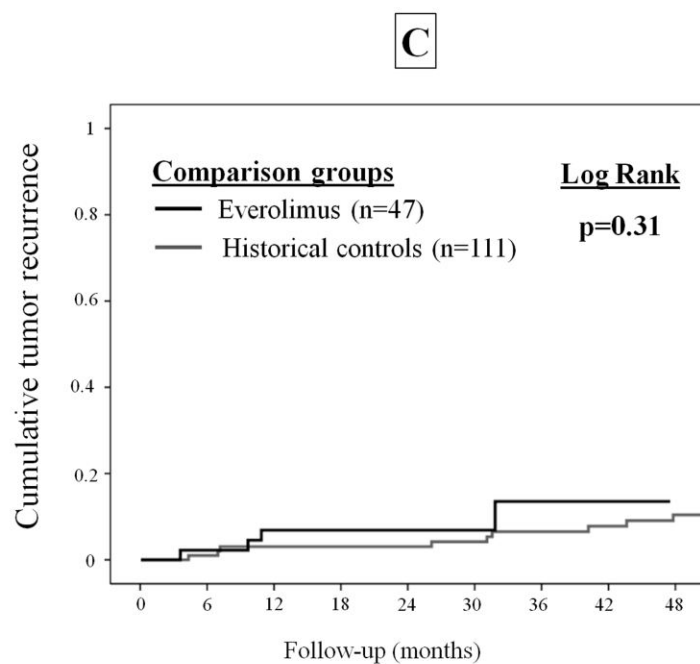
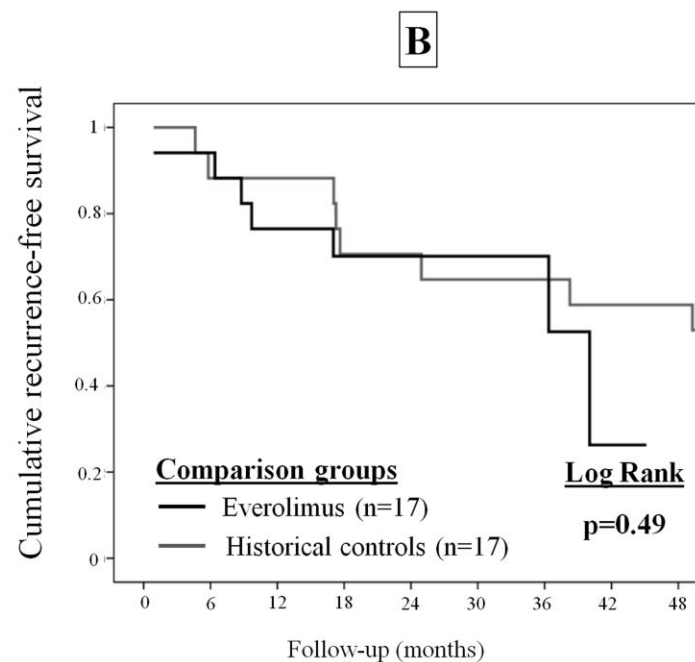
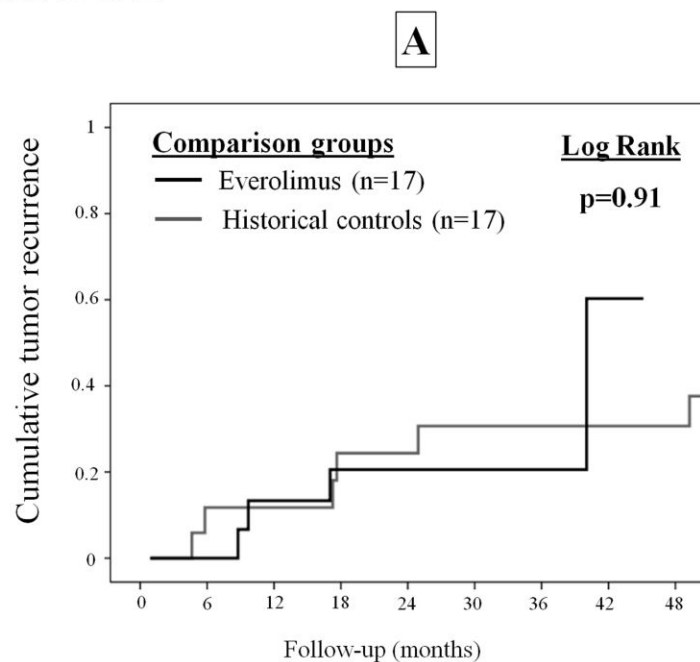


Figure S2: Kaplan Meier curve showing the impact of early initiated everolimus on tumor recurrence and recurrence-free survival in patients with microvascular invasion (A and B) and without microvascular invasion (C and D).