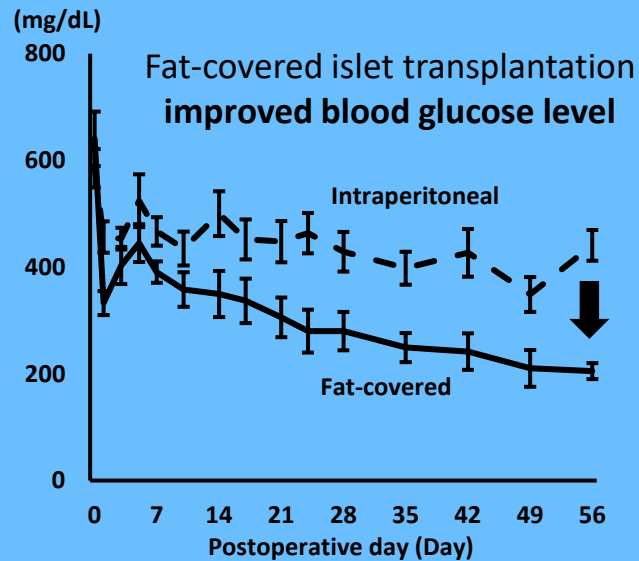


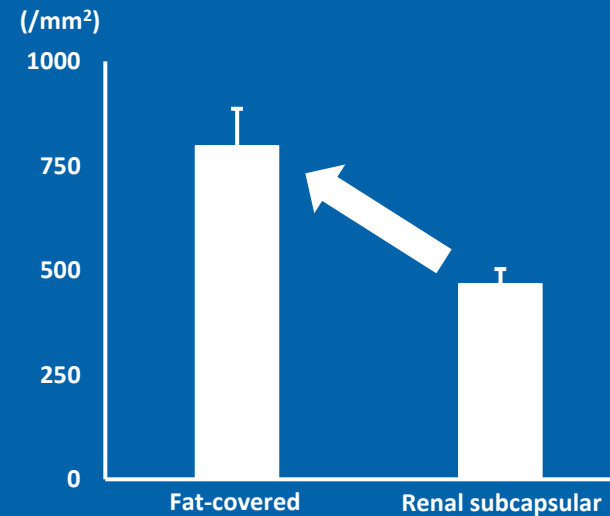
# Visceral white adipose tissue can be a useful site for islet transplantation

**AIM: To clarify the therapeutic effect and mechanism of islet transplantation into visceral white adipose tissue**



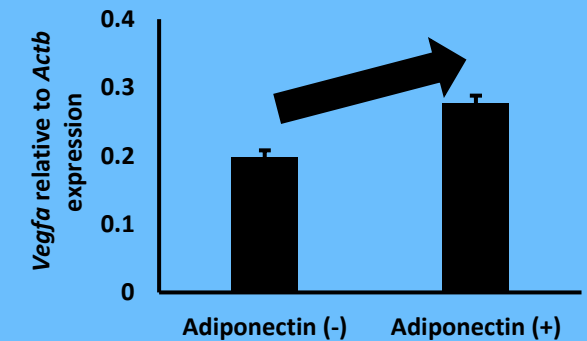
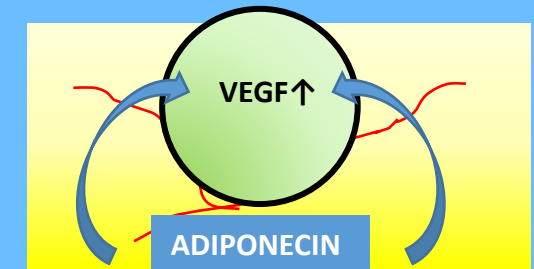
Fat-covered vs. Intraperitoneal  
**p = 0.0043**

**Vessel density in islets was increased by fat-covered islet transplantation**



Fat-covered vs. Renal subcapsular  
**p = 0.0011**

**Adiponectin** might contribute to islet engraftment into white adipose tissue



Adiponectin (-) vs. Adiponectin (+)  
**p = 0.012**

N. Sakata et al. *Transplantation*. December 2020

@TransplantJrnl

Copyright © 2020 Wolters Kluwer Health, Inc. All rights reserved

**Transplantation**

