

Figure S1

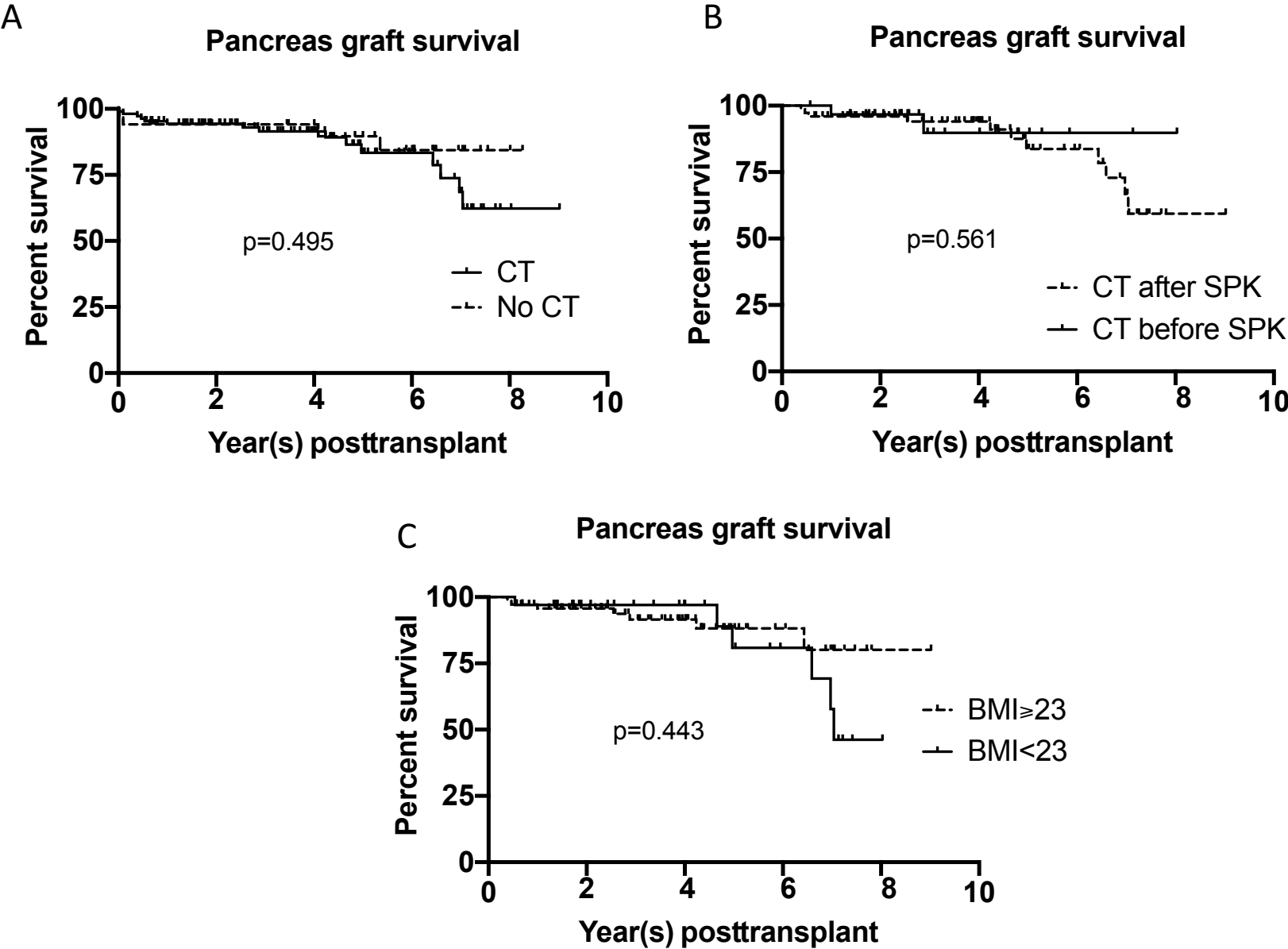


Figure S1. Kaplan-Meier survival curves for pancreas graft survival in patients (A) with and without a perioperative CT scan of the abdomen, (B) with a CT scan performed before or after surgery, and (C) with a BMI at transplant lower and higher than 25 kg/m². *P* value was calculated using the log rank test.

Figure S2

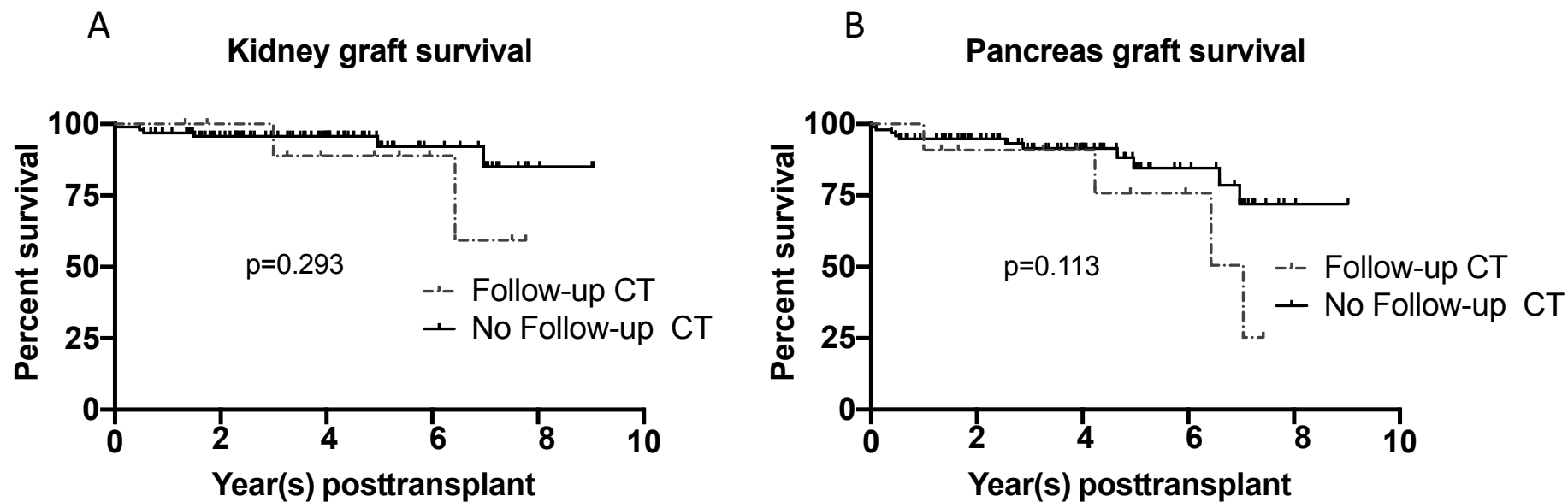


Figure S2. Kaplan-Meier survival curves for (A) kidney and (B) pancreas graft survival in patients with or without a follow-up CT scan.