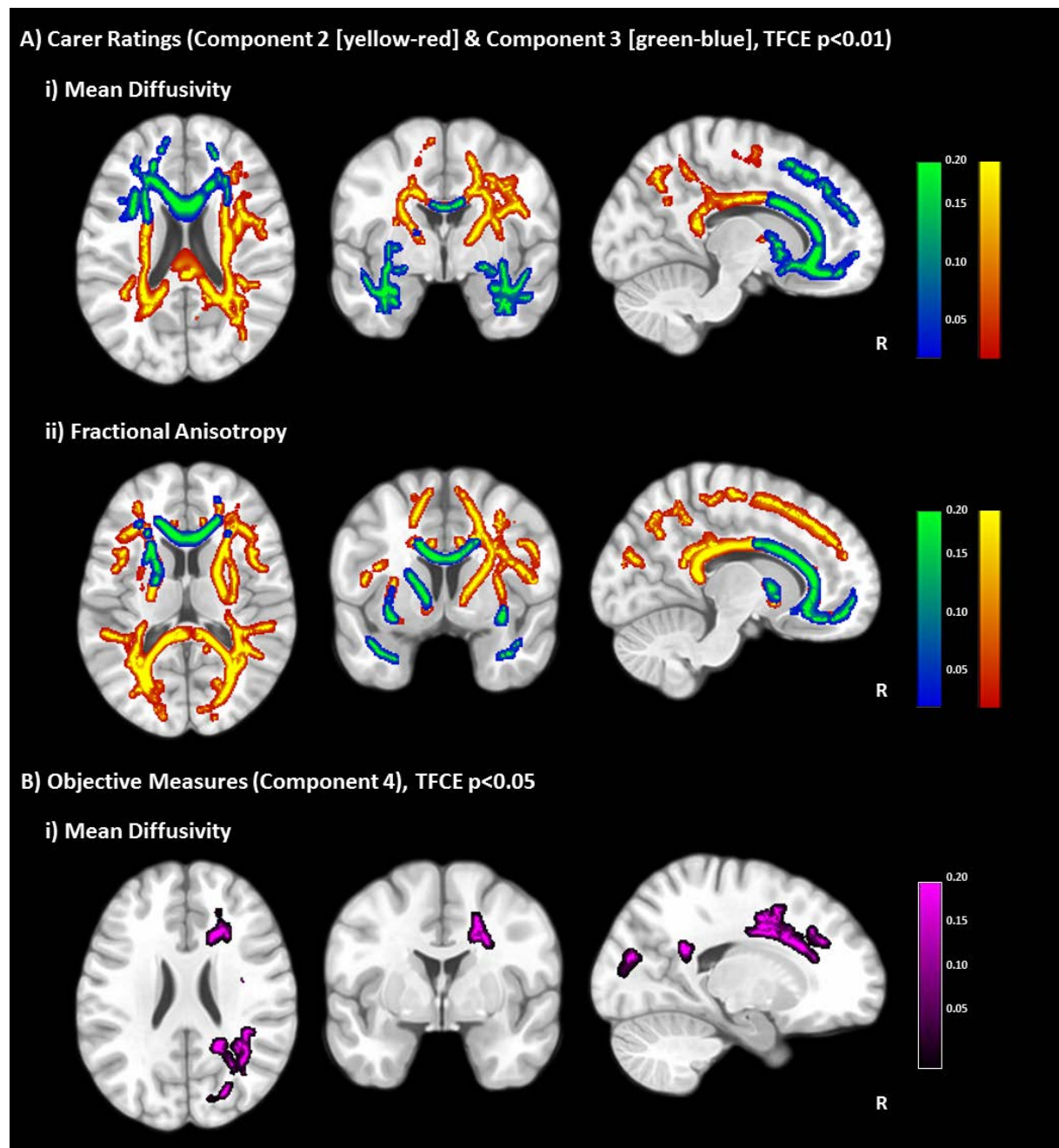
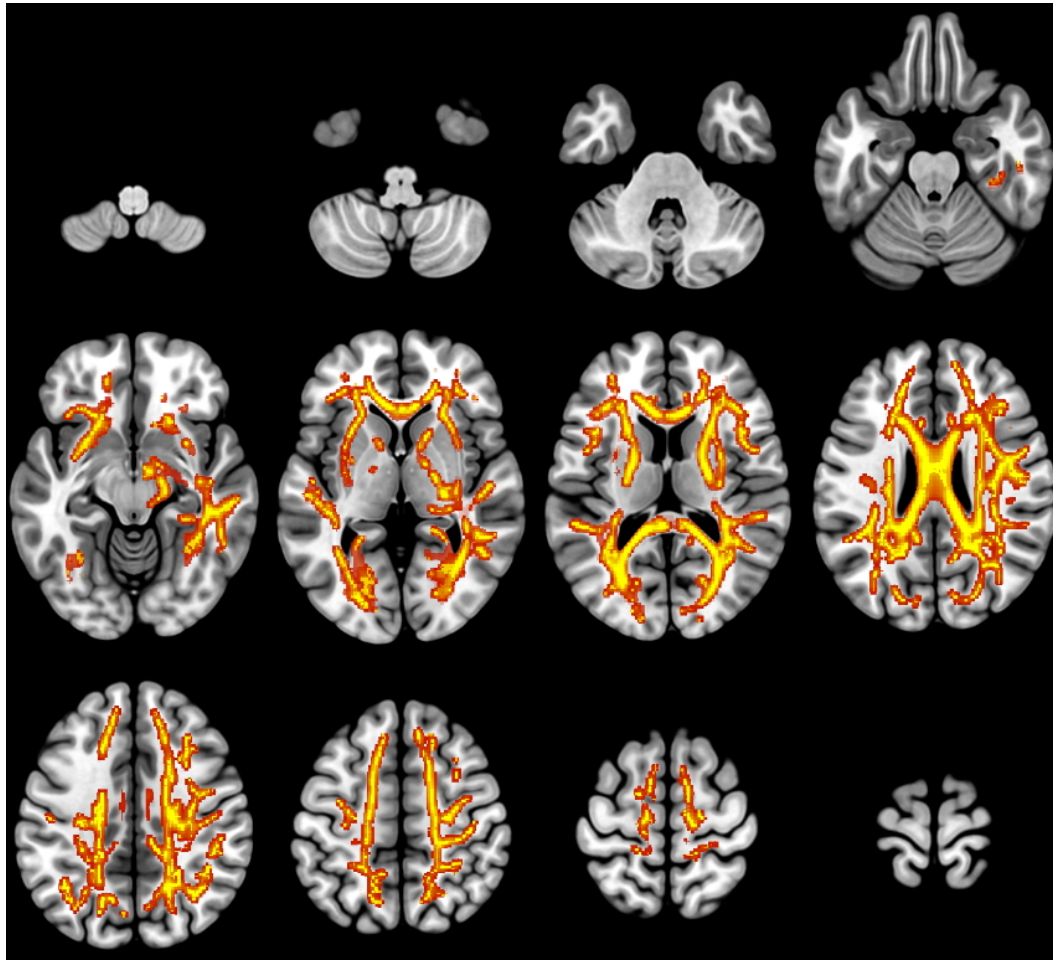


Figure e-1: White Matter Diffusion Tensor Imaging Correlates of Components 2-4.



A) Correlates of carer rated change in everyday skills and self care (component 2: yellow-red) and carer rated change in complex behaviours (component 3: green-blue) in terms of (i) mean diffusivity and (ii) fractional anisotropy. Higher scores correlated with increased mean diffusivity and decreased fractional anisotropy. B) Mean diffusivity correlates of patient performance on objective measures, including the motor and saccadic Go/NoGo, IST and CRRT (Component 4). Higher scores correlated with increased mean diffusivity. Correlations between the skeletonised DTI-based tracts and the components were assessed by non-parametric permutation analysis using FSL randomise with Threshold-Free Cluster Enhancement (TFCE) correction, 2D optimisation and 5000 permutations. Cluster significance was tested at A) $p < 0.01$ and B) $p < 0.05$.

Figure e-2: Fractional Anisotropy Multislice Images for Component 2



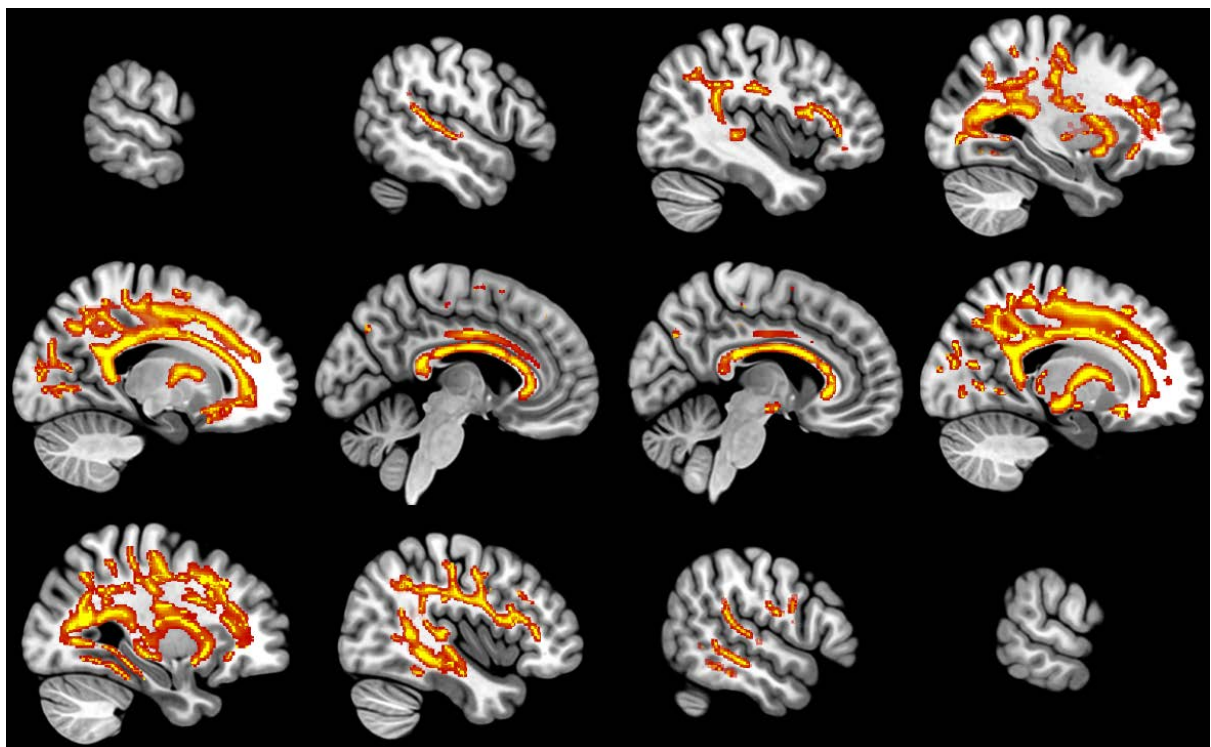
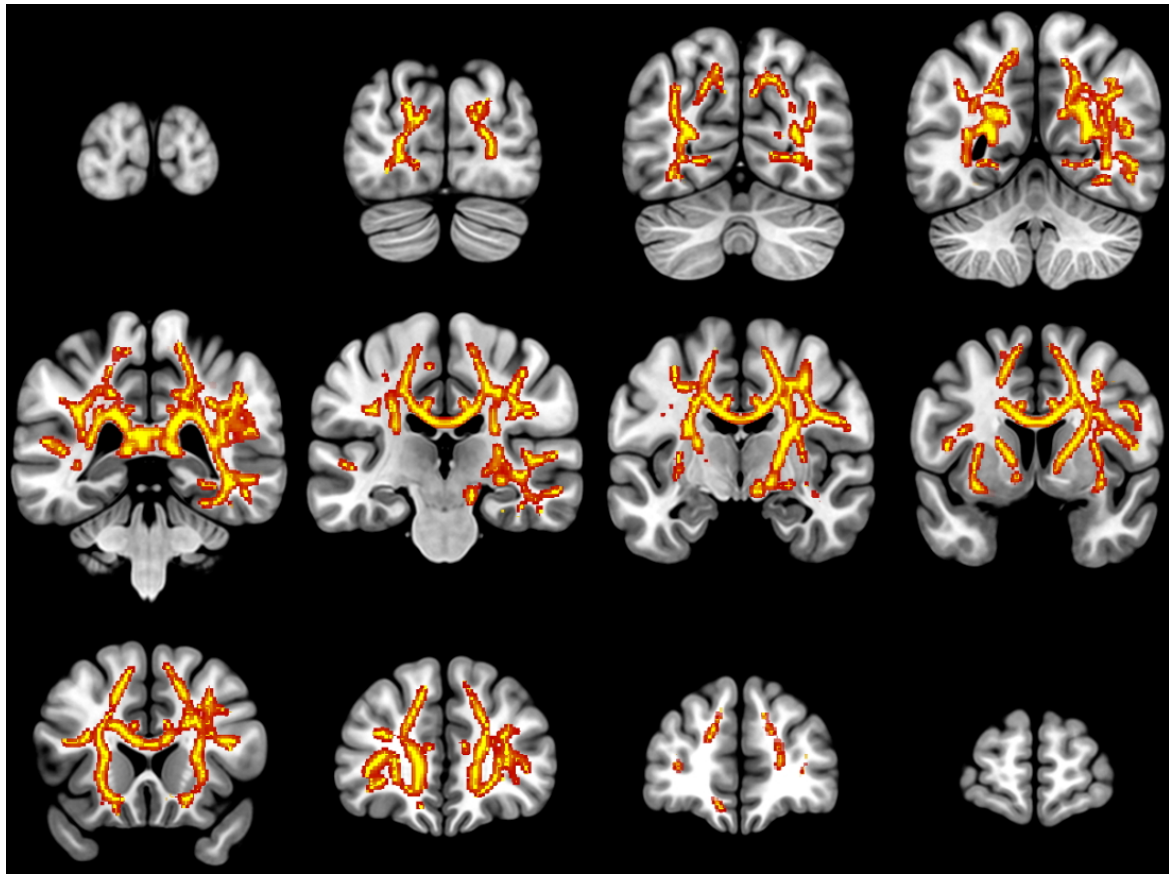
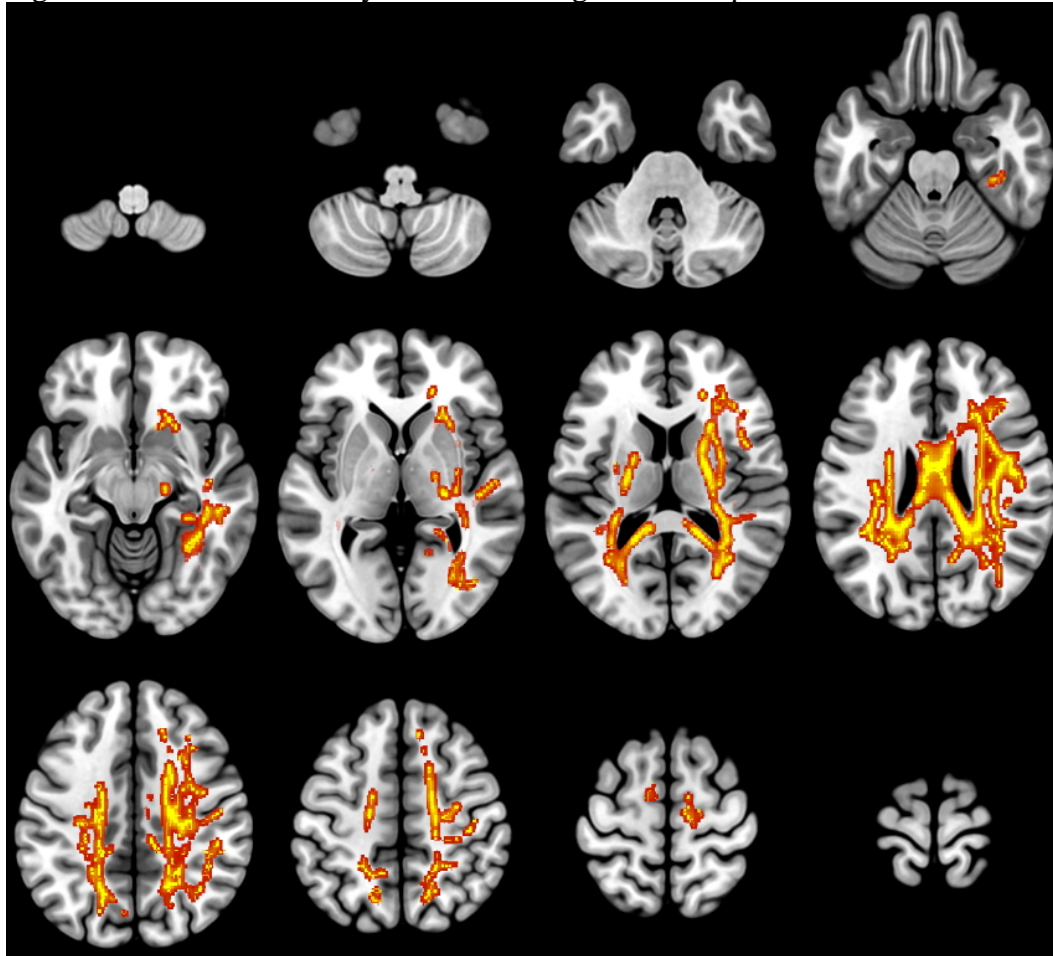


Figure e-3: Mean Diffusivity Multislice Images for Component 2



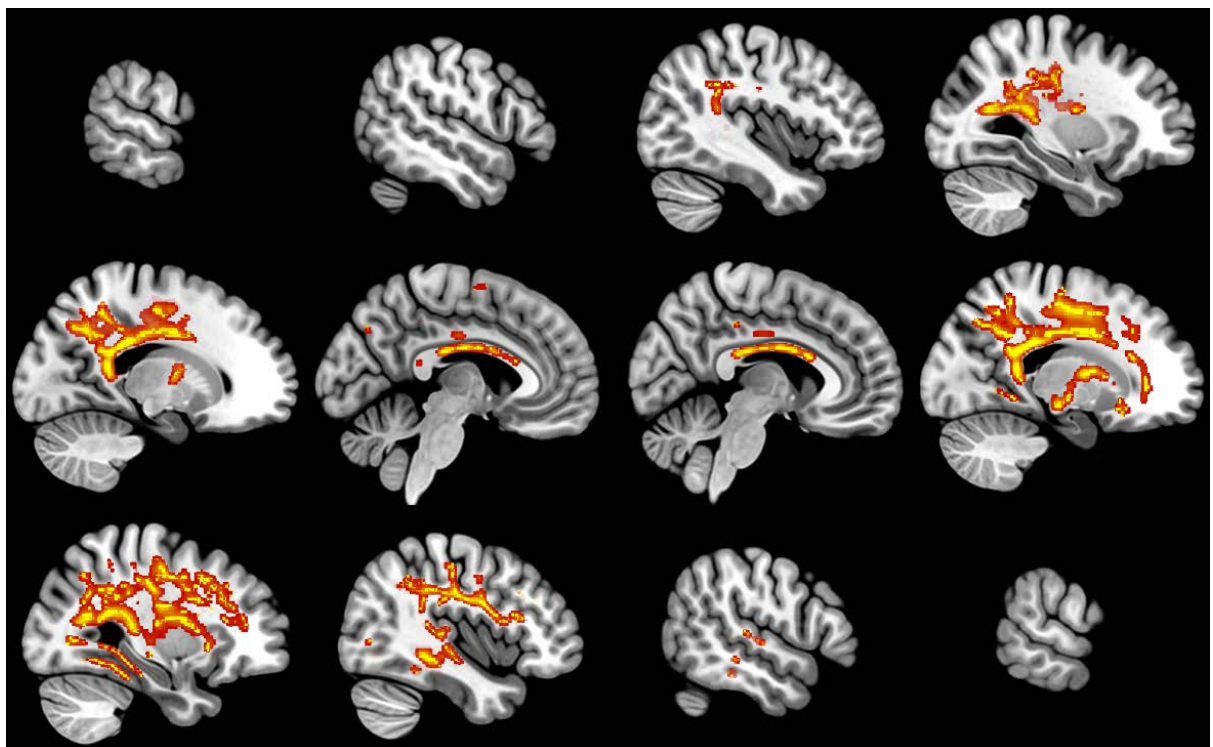
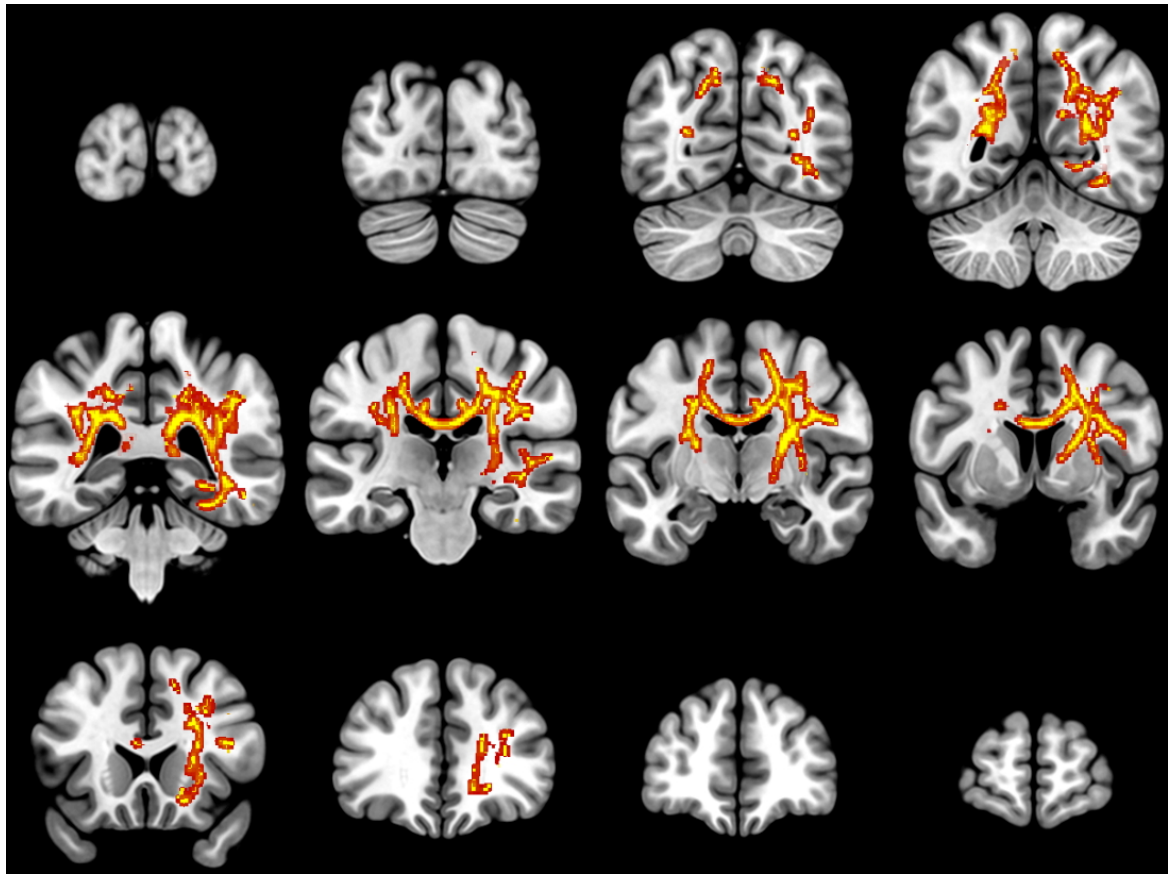
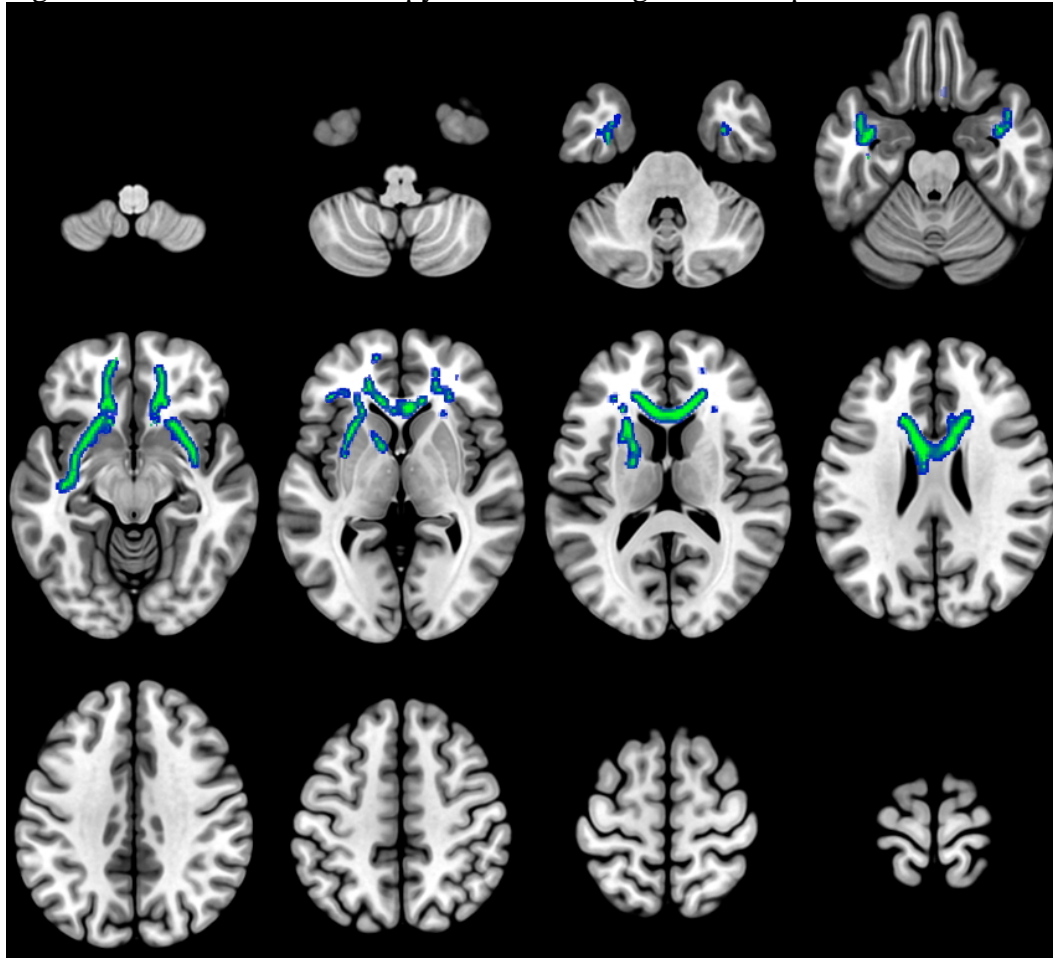


Figure e-4: Fractional Anisotropy Multislice Images for Component 3



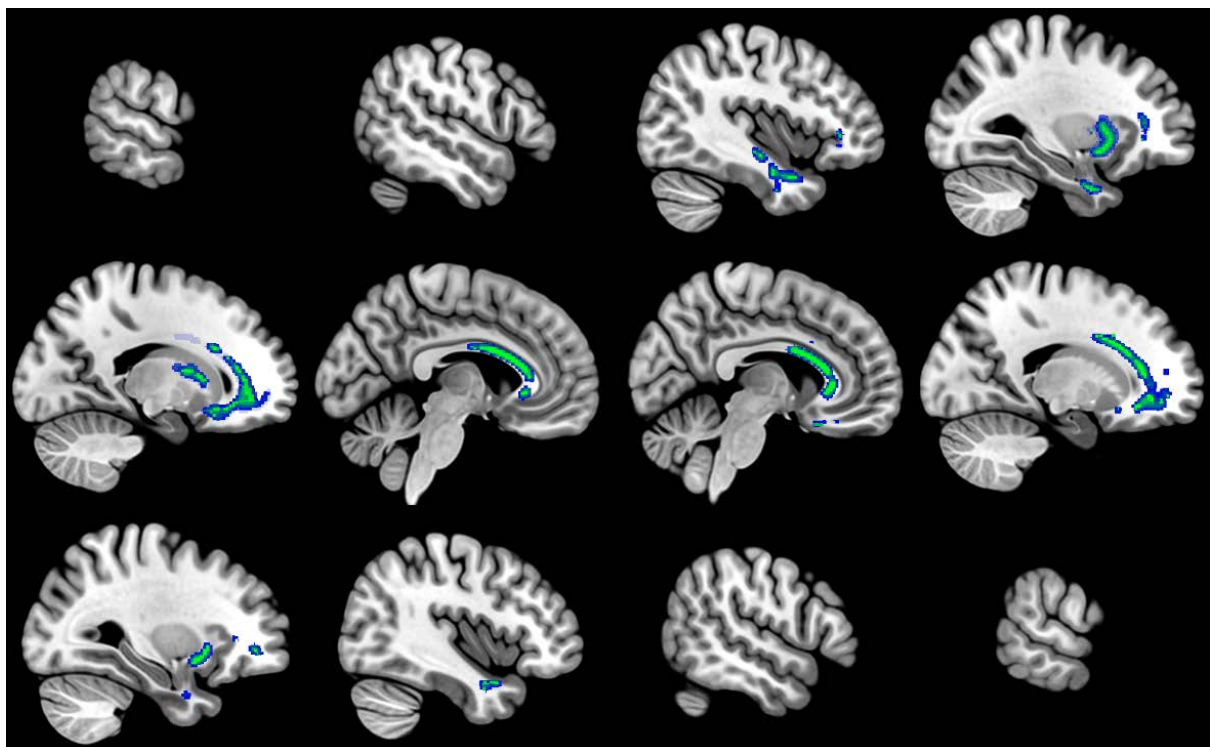
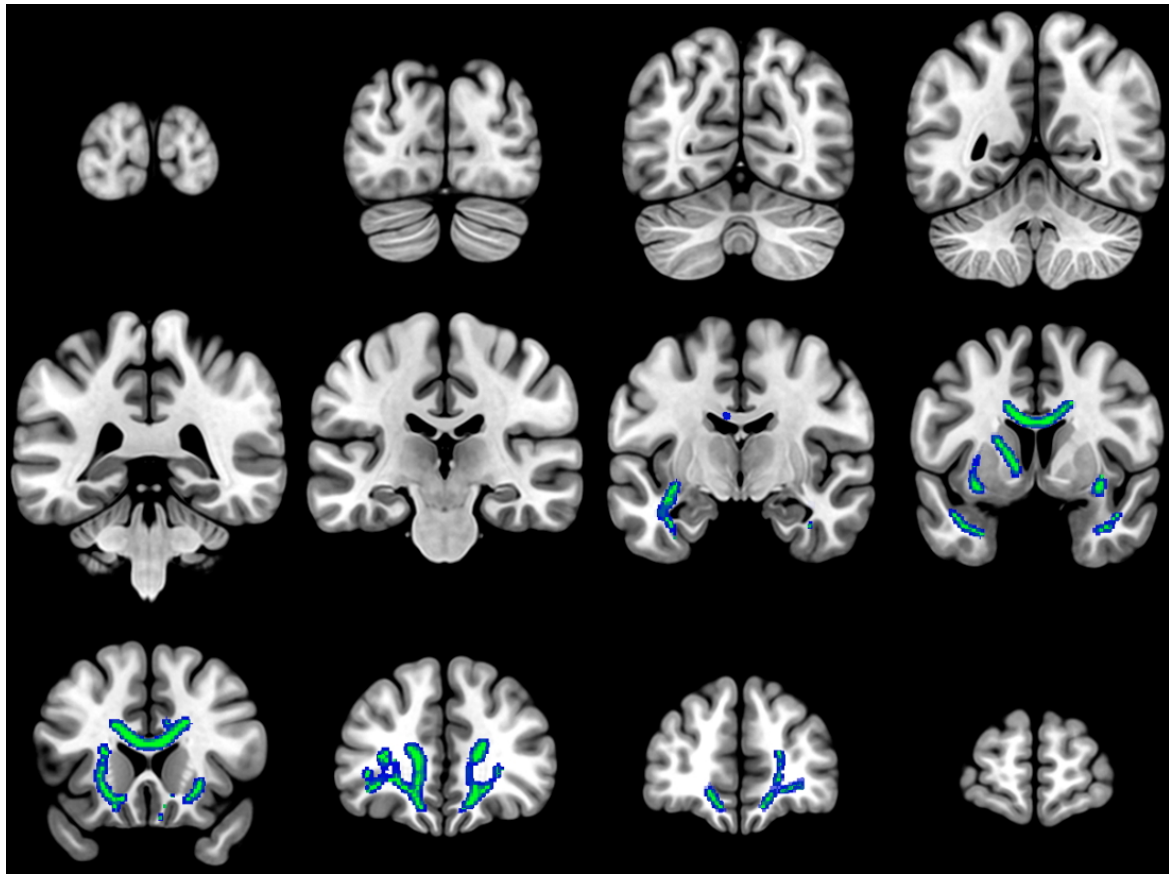
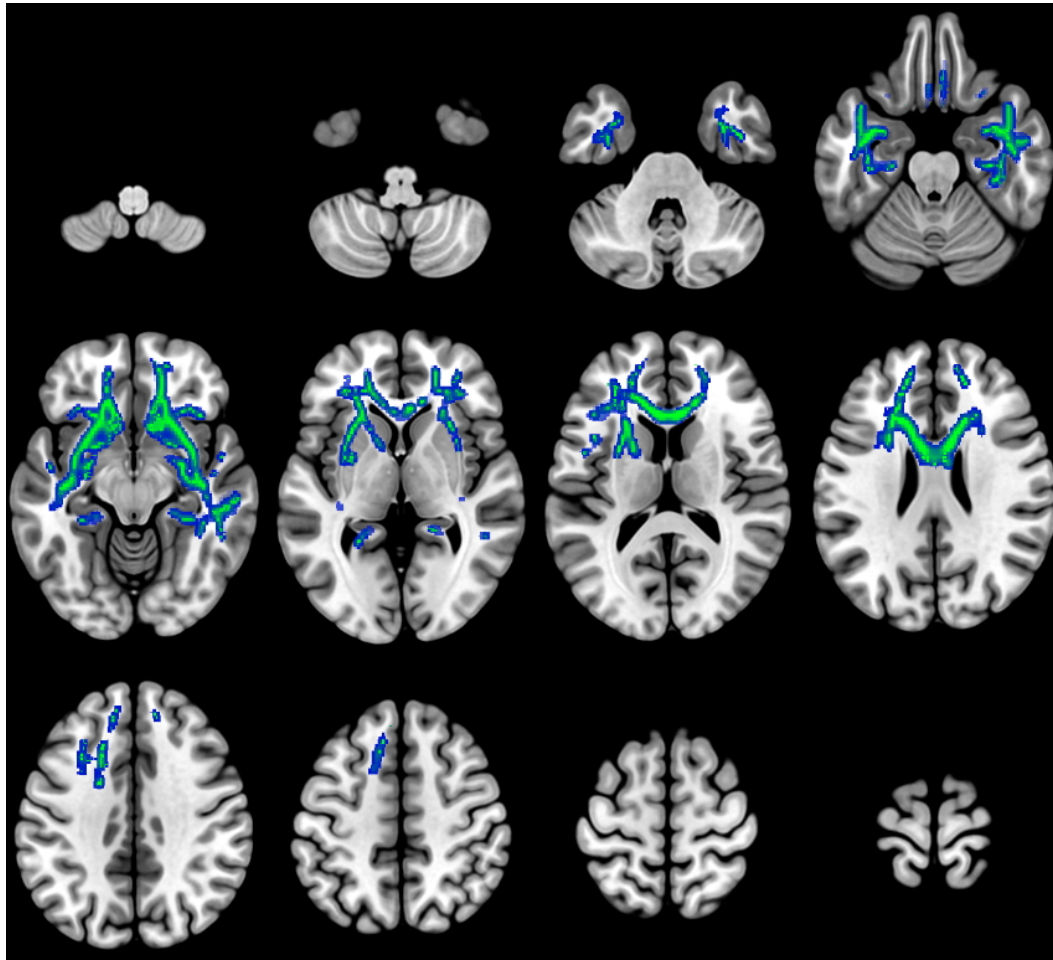


Figure e-5: Mean Diffusivity Multislice Images for Component 3



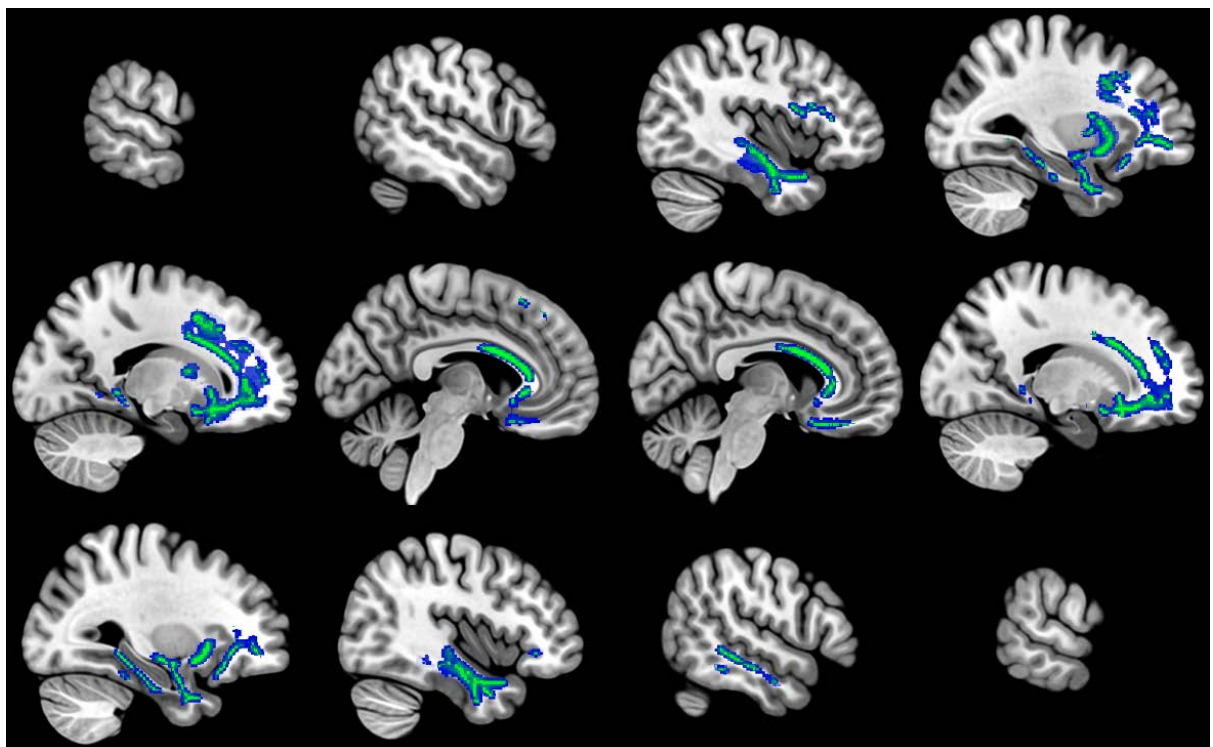
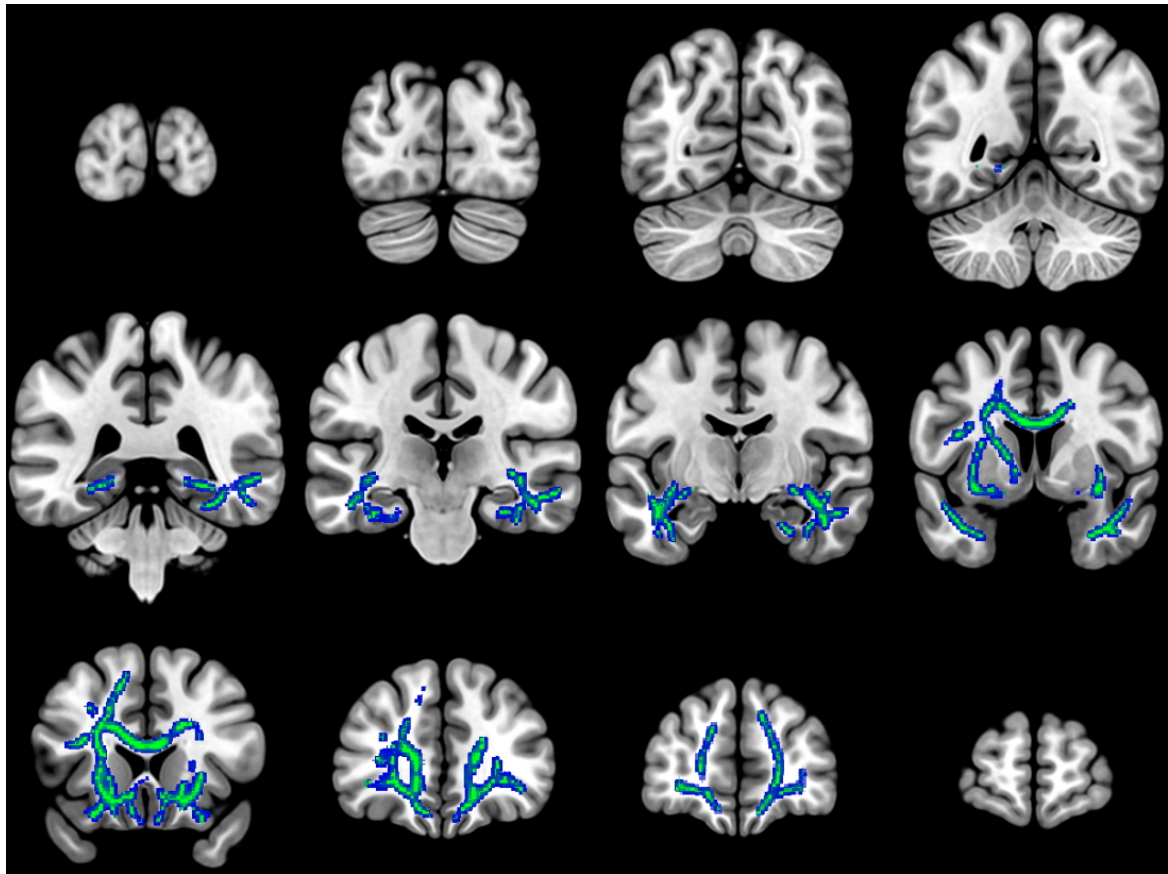


Figure e-6: Mean Diffusivity Multislice Images for Component 4

