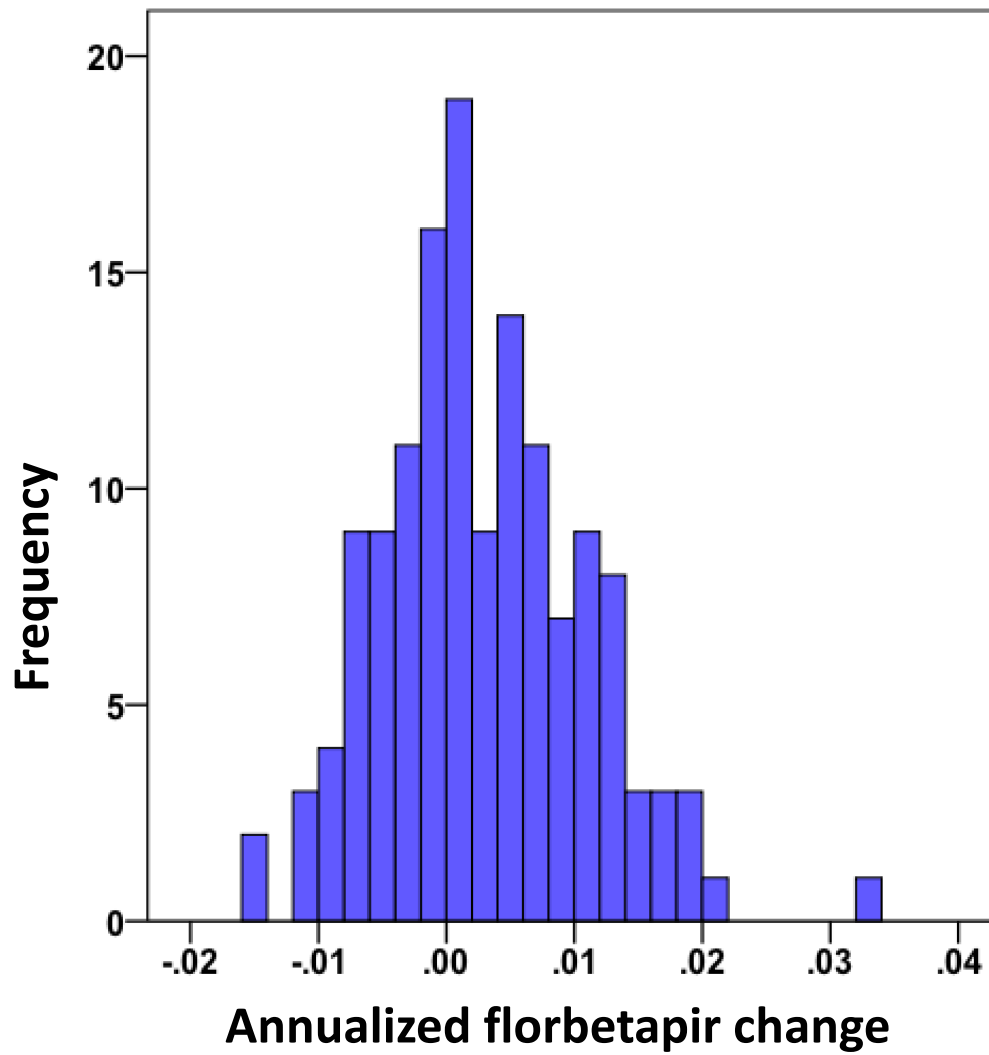


**Figure e-1.** Frequency histogram shows the distribution of florbetapir slopes (annual change) in the 142 baseline-negative cognitively normal subjects.



**Figure e-2.** Florbetapir change is not related to concurrent volumetric change within the same frontal, parietal, temporal, and cingulate regions used to calculate the florbetapir cortical summary SUVR.

