

# A 67-Year-Old Female With Tremor, Ataxia, and Cognitive Impairment

Teaching NeuroImages

*Neurology*<sup>®</sup>

Resident & Fellow Section

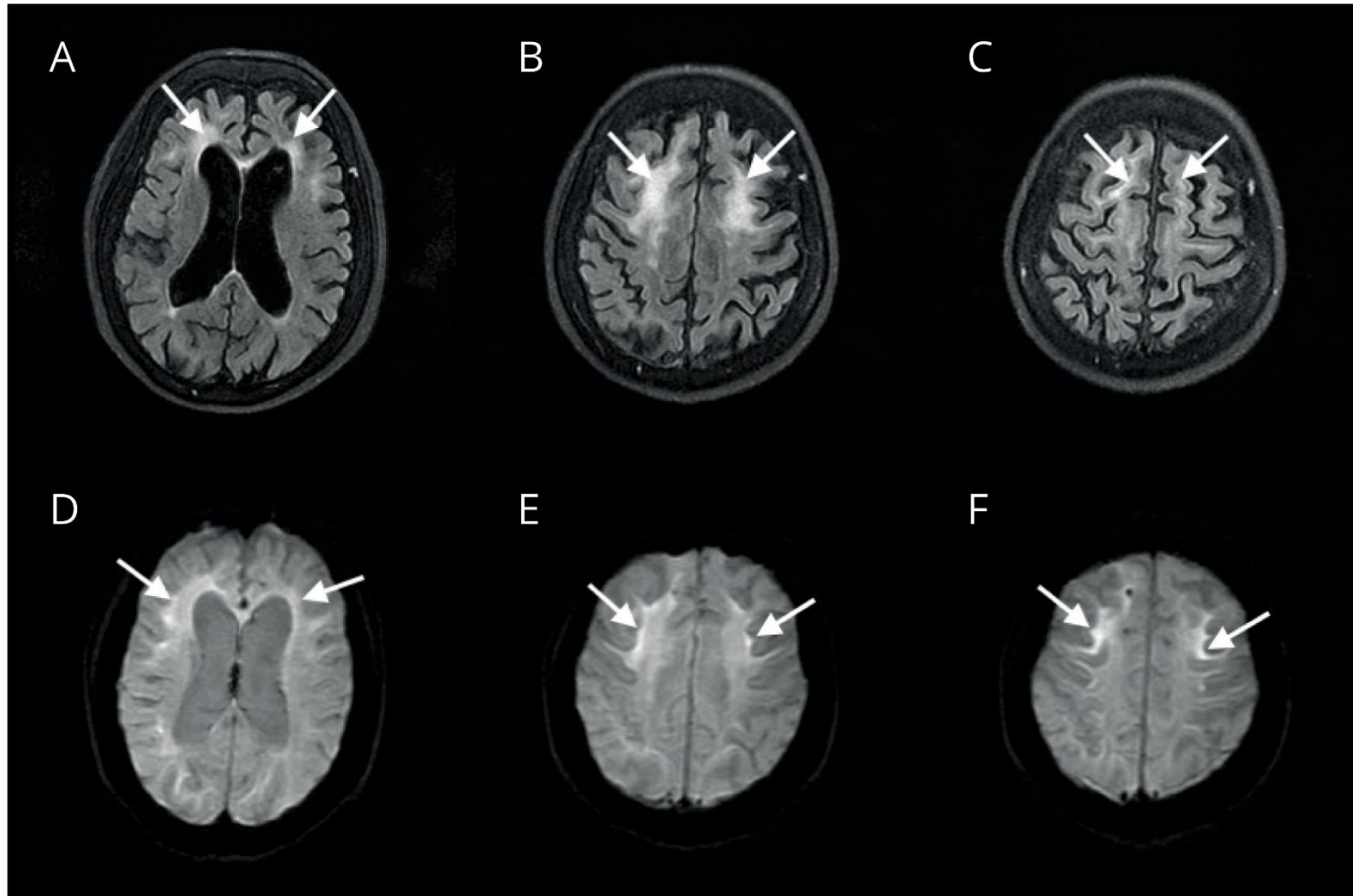
# Vignette

- A 67-year-old female presented with forgetfulness and unsteadiness for 2 years.
- She scored 17 on Montreal Cognitive Assessment (MoCA).
- She had tremor of head and upper limbs since early adulthood which was diagnosed as essential tremor.

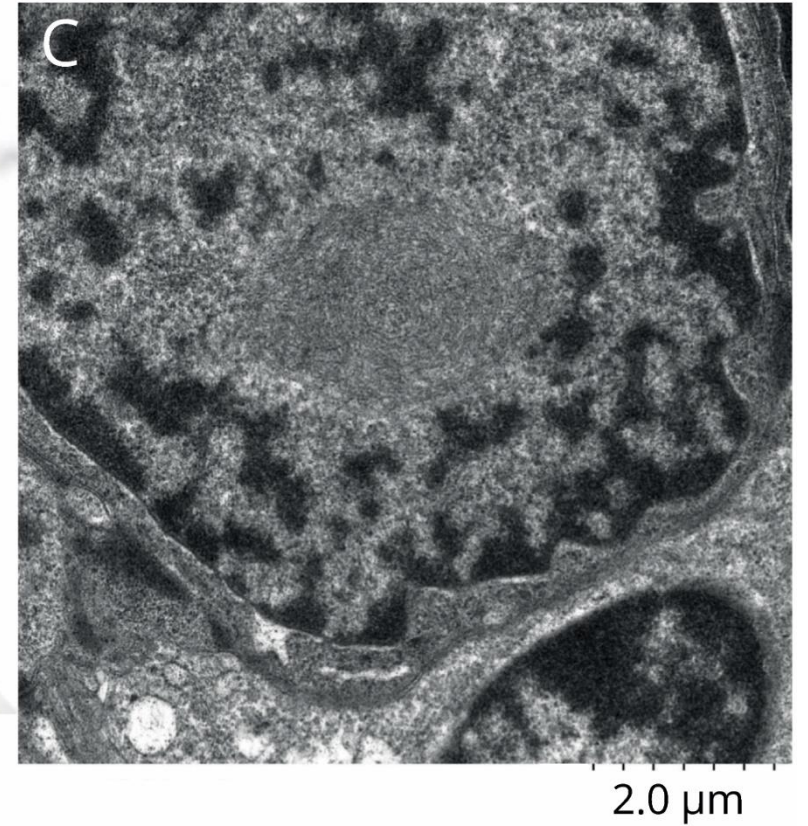
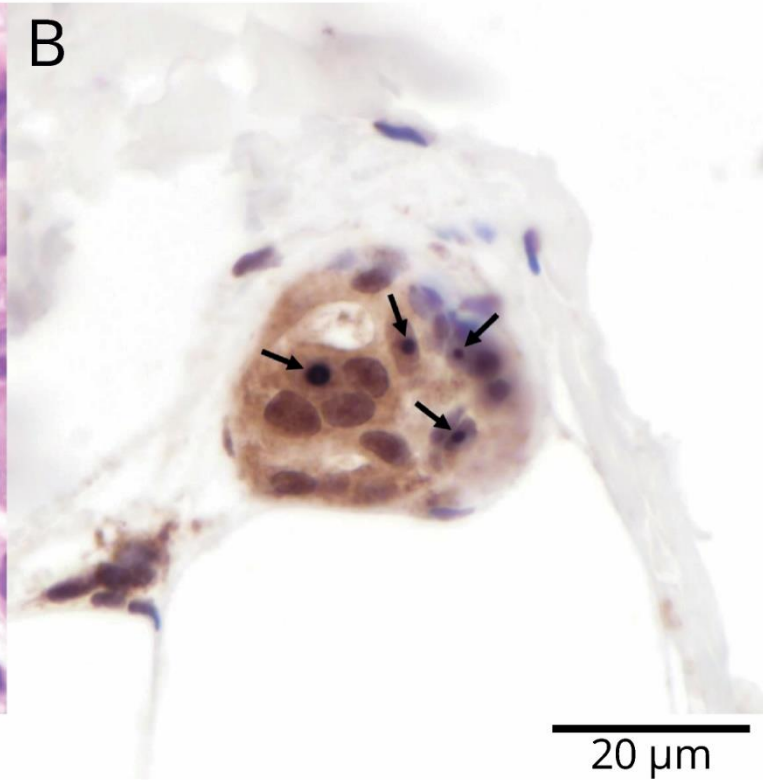
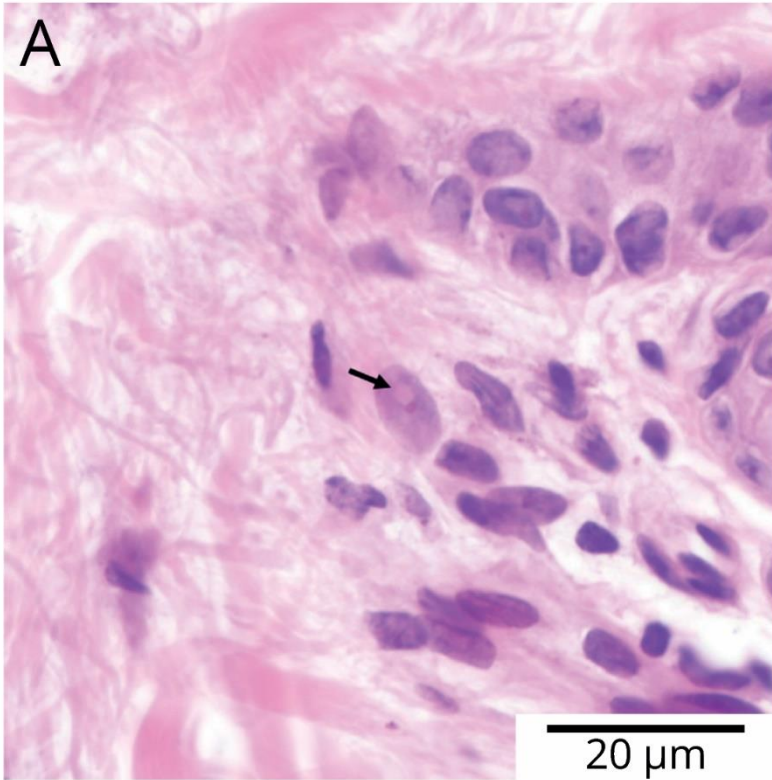
# Video



# Imaging



# Imaging



# Adult-onset neuronal intranuclear inclusion disease (NIID)

- NIID is a rare and clinically heterogeneous neurodegenerative disease.<sup>1</sup>
- MRI brain shows leukoencephalopathy, and high-signal intensity along the corticomedullary junction on diffusion-weighted images (DWI).
- The diagnosis can be confirmed by skin biopsy showing pathognomonic eosinophilic intranuclear inclusions.<sup>2</sup>