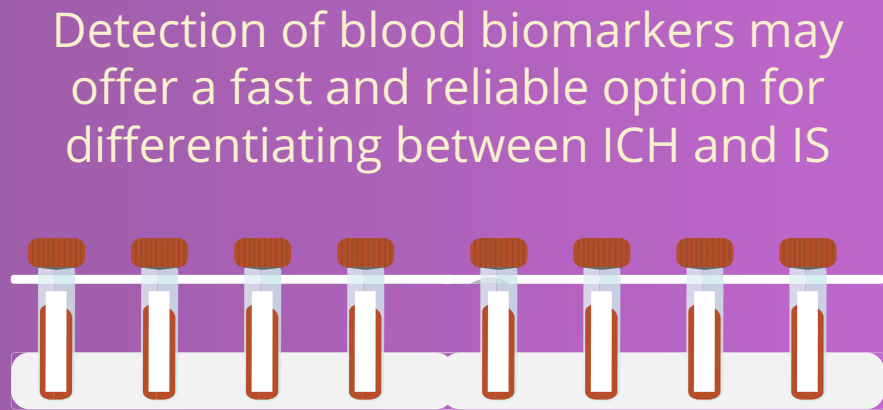
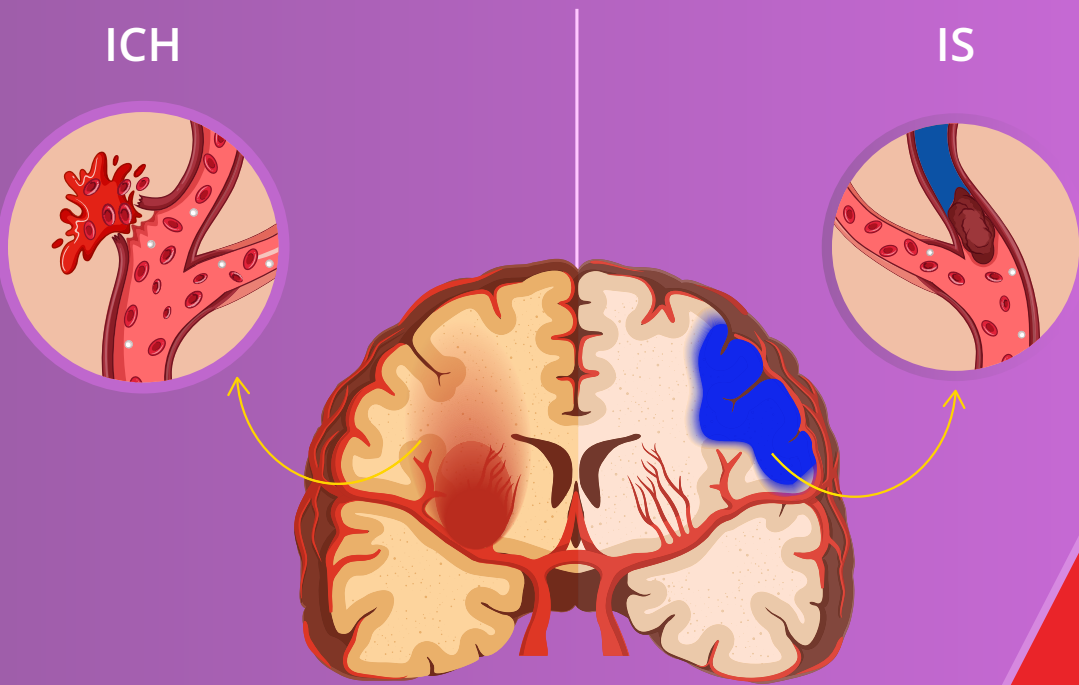
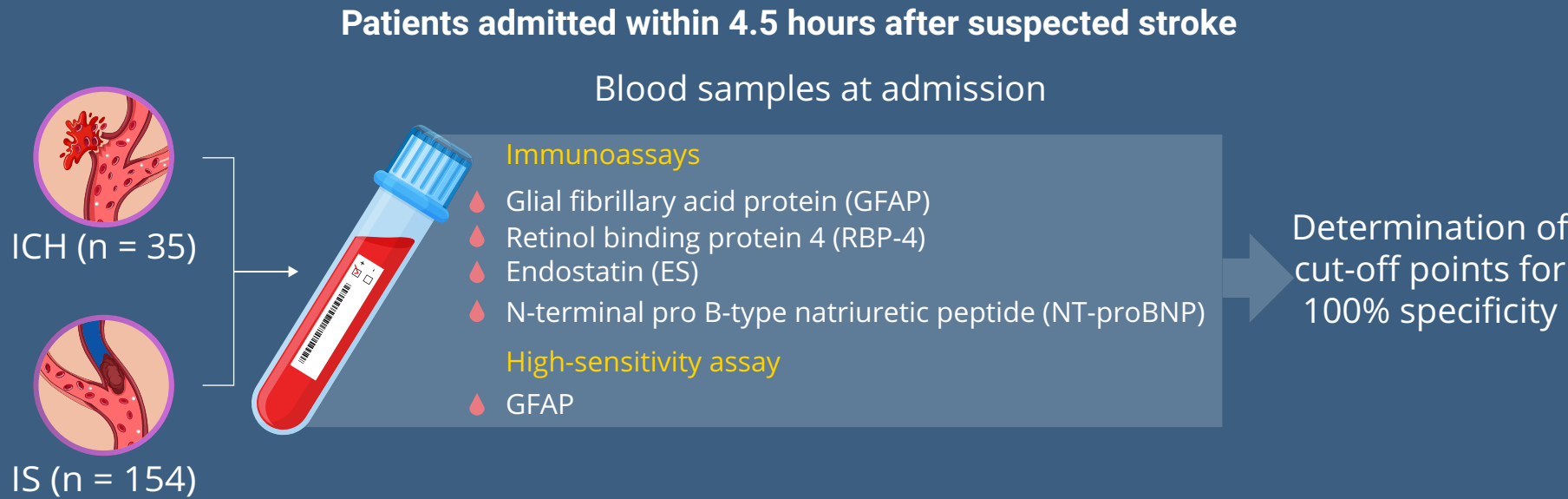


Can Blood Biomarker Panels be Used for Identification of Ischemic Stroke?

Quick differentiation between intracerebral hemorrhage (ICH) and ischemic stroke (IS) is vital for initiating prehospital thrombolysis and determining patient outcome



This study aimed to validate and develop a panel of blood biomarkers that could accurately differentiate between ICH and IS



	Biomarker levels	
	ICH	IS
GFAP	High	Low
RBP-4	Low	High
ES	Low	High
NT-proBNP	Low	High

Biomarker combinations that yield 100% specificity

Immunoassay



High-sensitivity assay



Biomarker panel including RBP-4, NT-proBNP, and GFAP can provide potentially useful sensitivity rates for IS diagnosis