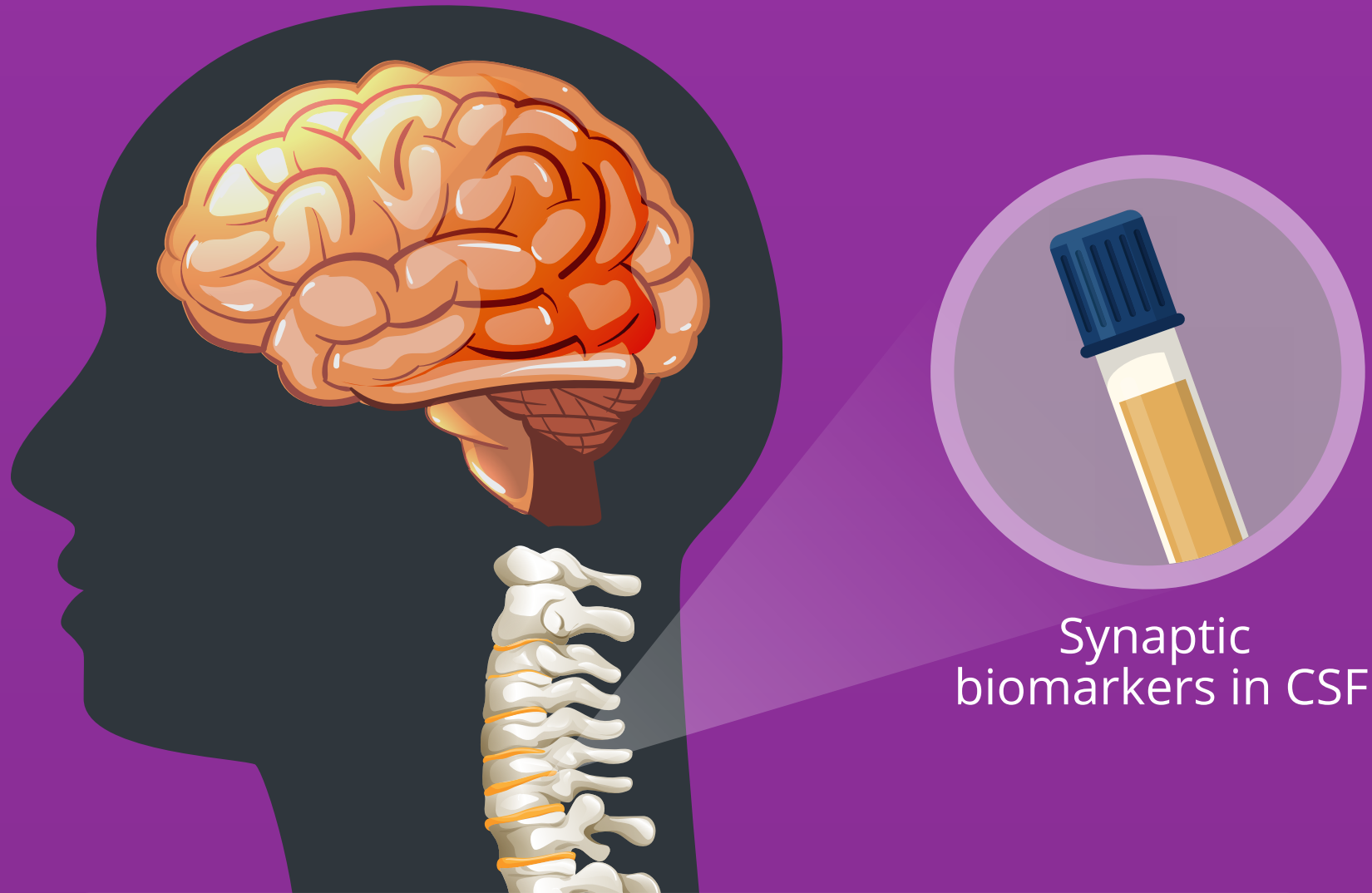


Synaptic Biomarkers in Early Stage of Alzheimer Disease

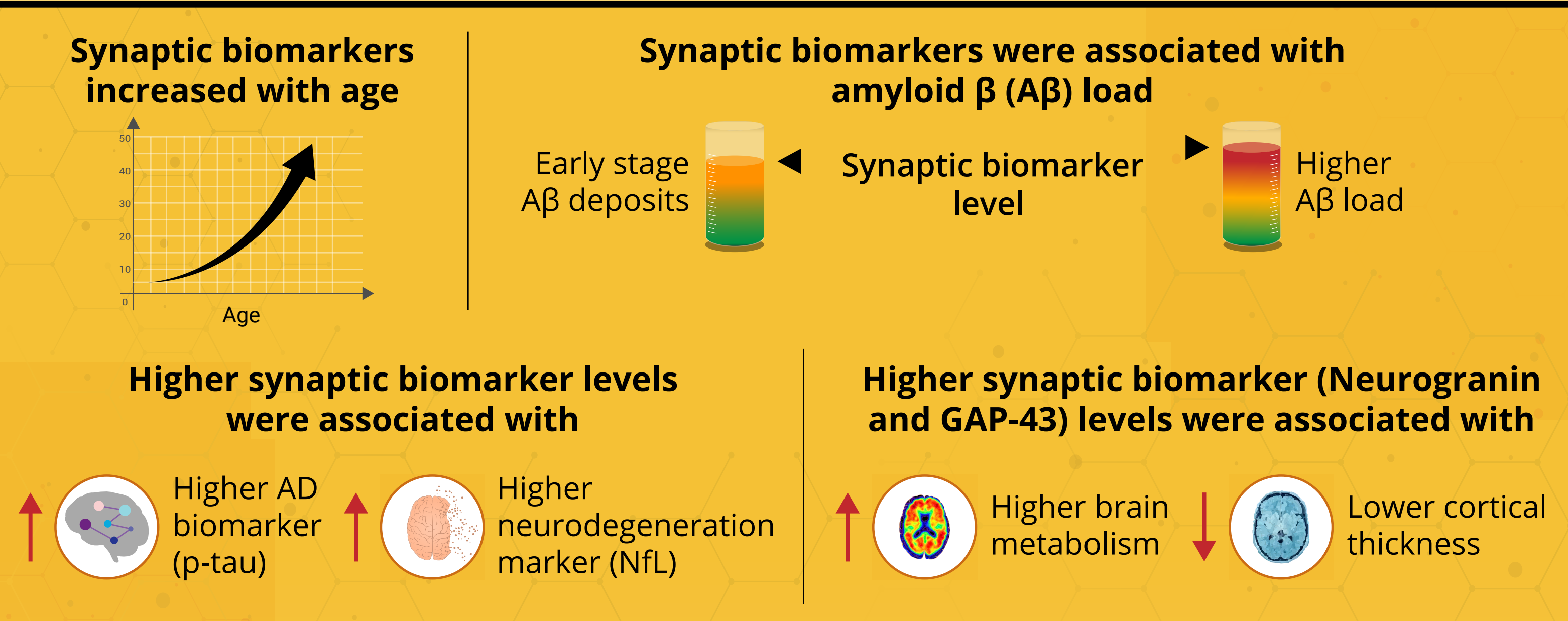
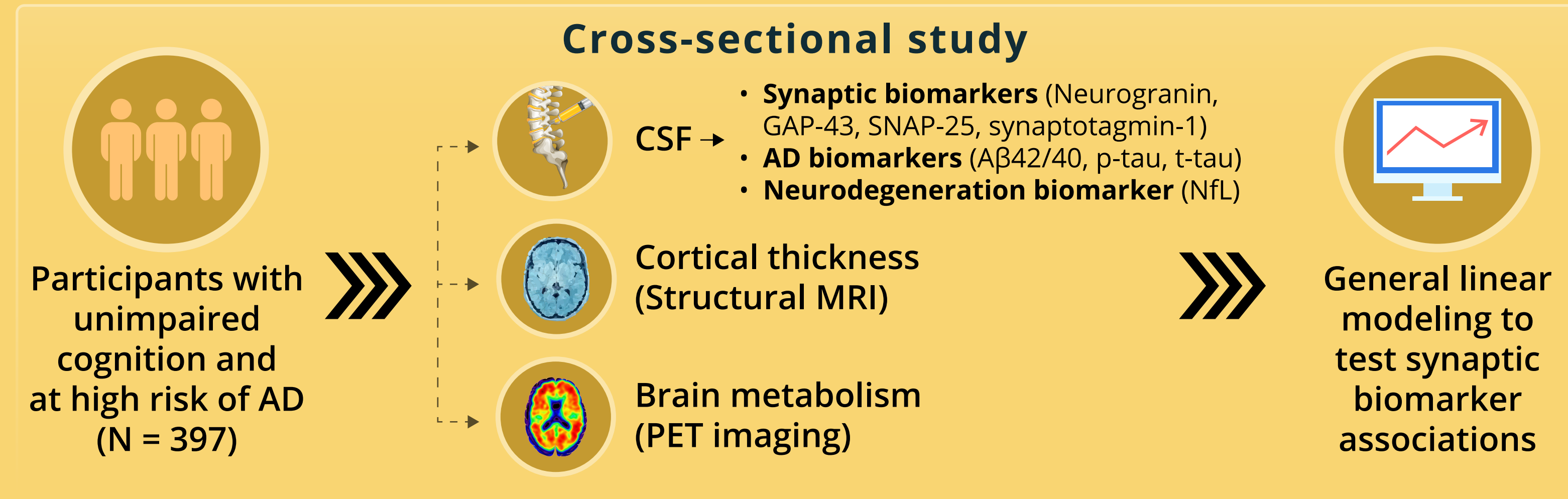
Synaptic dysfunction occurs early in Alzheimer disease (AD), and is closely associated with cognitive decline

Recent evidence suggests that synaptic cerebrospinal fluid (CSF) biomarkers can discriminate symptomatic AD from other dementias



Study question

Are synaptic biomarkers altered in preclinical stage of AD?



CSF synaptic biomarkers are increased in preclinical stages of AD even with low Aβ burden