

Neurology[®]

The most widely read and highly cited
peer-reviewed neurology journal

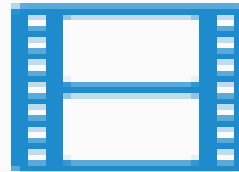
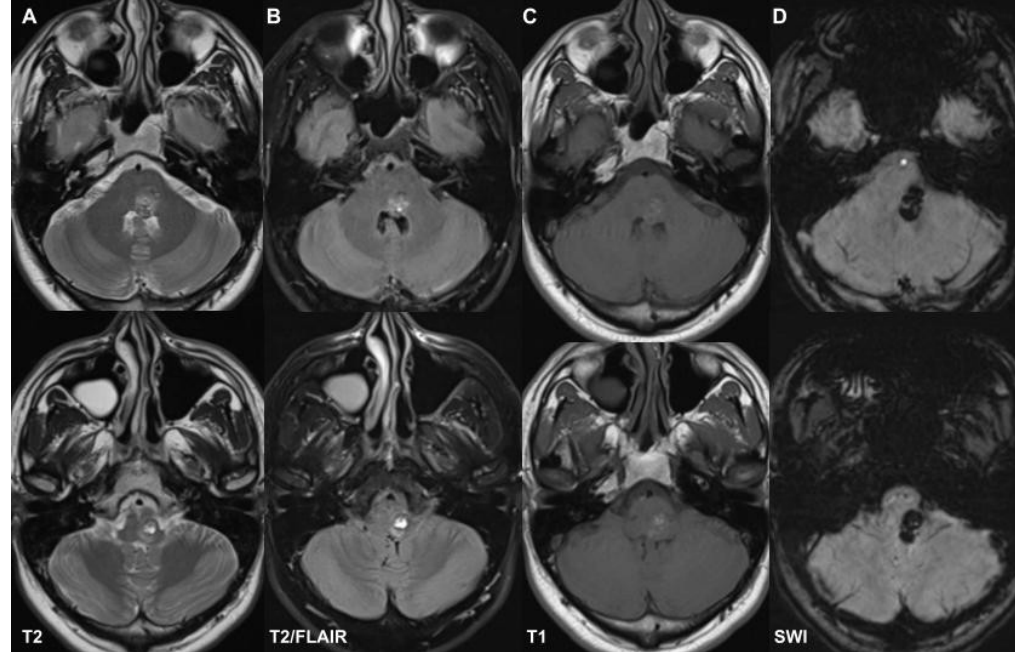
Resident & Fellow Section Teaching Neurolmage (or Teaching Video Neurolmage)

**A 27 year-old man with diplopia and facial
weakness**

Vignette

- 27 year-old man, previously healthy
- 6 month history of diplopia, sudden worsening in the past 2 week

Imaging



Pontomedullary cavernoma with acute hemorrhage

- Gaze palsy: inability to look to the left side
- Excellent alignment in primary position
 - Contrast this to a sixth nerve palsy where marked esodeviation is present
- Left upper and lower facial weakness
 - Involvement of fascicles of the left facial nerve as they wrap around the sixth nerve nucleus