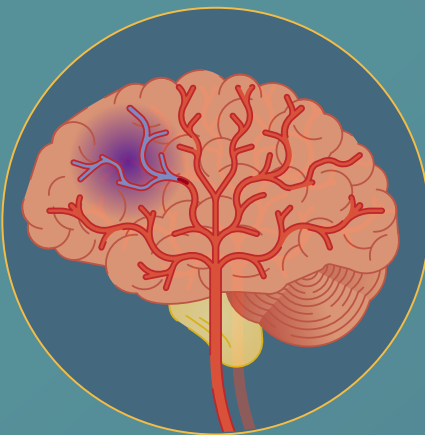


Factors Affecting Symptoms of Depression After Stroke



Patients suffering from stroke have a high risk of developing depression within the following year

Study question

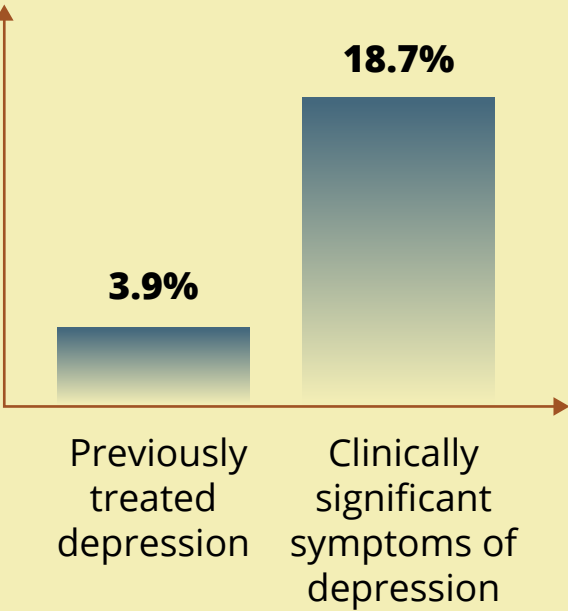
What are the sociodemographic and clinical factors affecting onset of depression after stroke?

1,221 patients recruited within 2 weeks of stroke onset

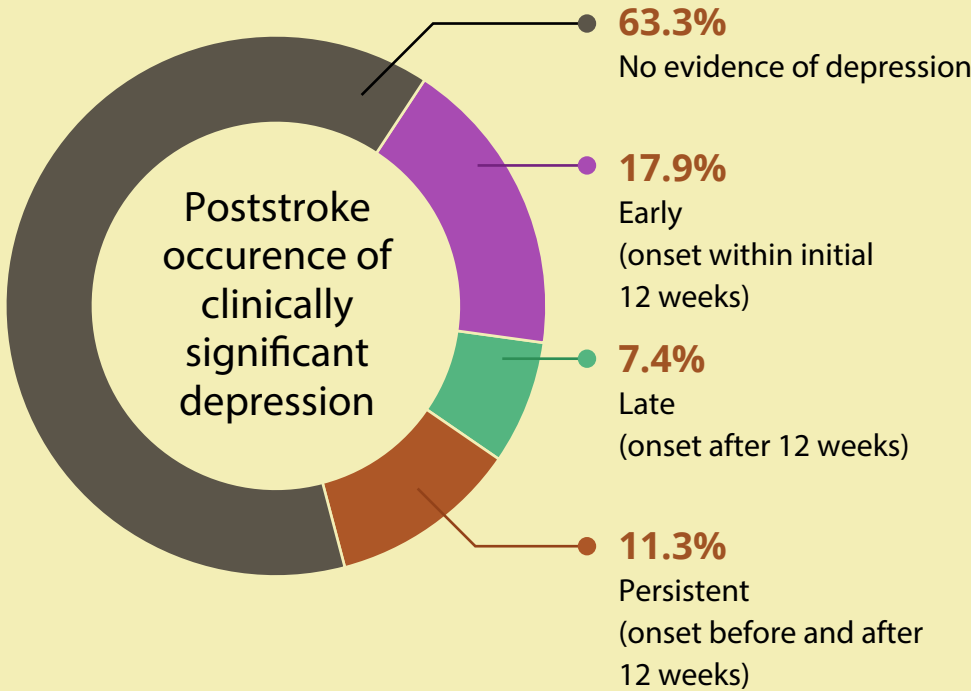


Clinically significant depression confirmed by Public Health Questionnaire score >9



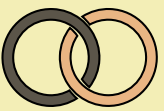
At baseline...



Within 52 weeks...



Factors associated with clinically significant symptoms of depression (Risk ratio, 95% CI)

	Early (onset <12 weeks)	Late (onset >12 weeks)	Persistent (onset before and after 12 weeks)
 Increased stroke severity	2.08 (1.65–2.62)	1.53 (1.14–2.06)	2.50 (1.89–3.32)
 Past depression			6.28 (2.88–13.71)
 Marital/partnered status			3.94 (2.42–6.41)

Severity of neurologic and functional deficits increases the risk of poststroke clinically significant symptoms of depression early and persistently; depression before stroke, personal relationships, and cultural context contribute to mediate depression risk