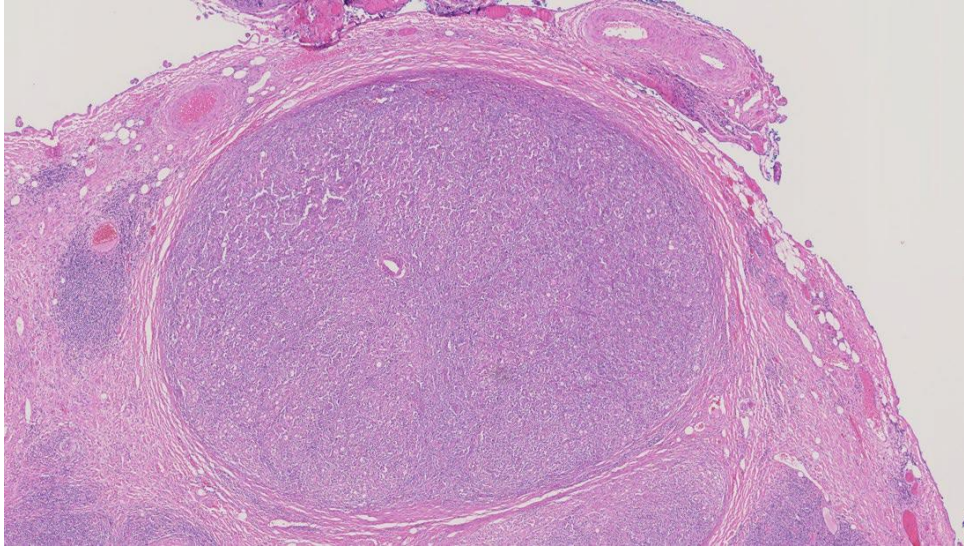
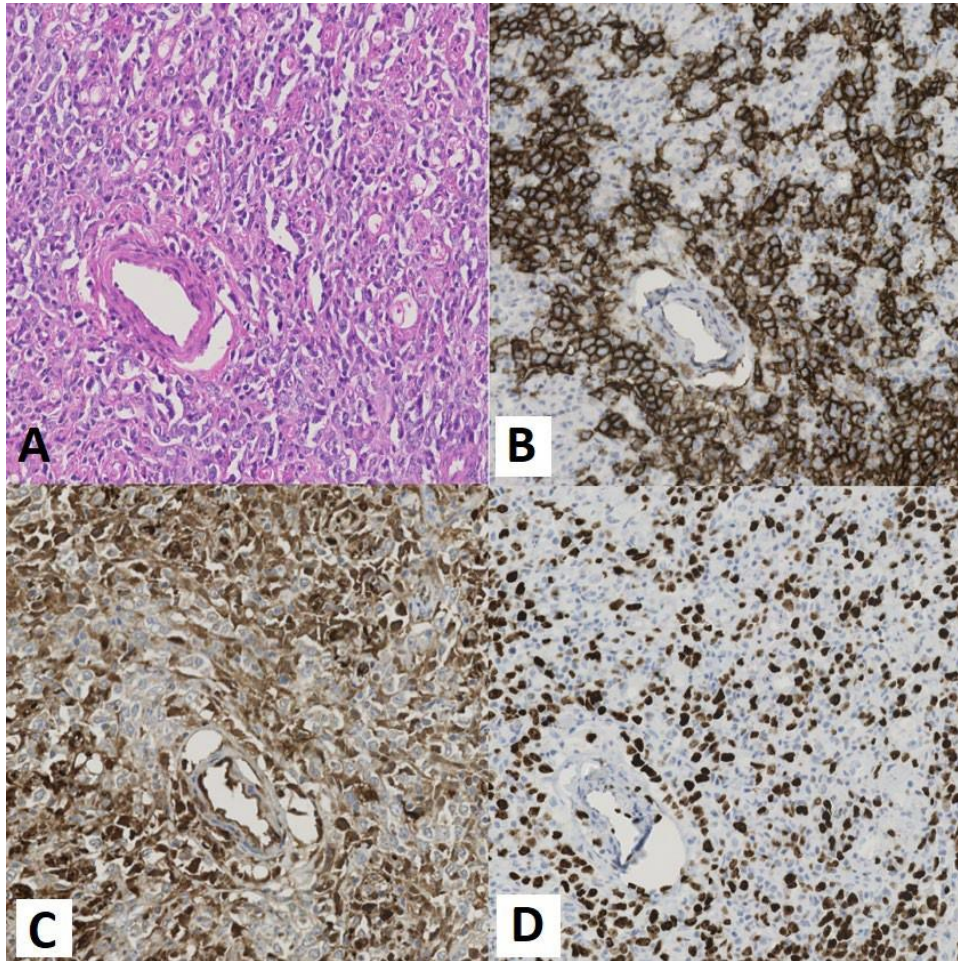


**eFigure 1. Low magnification image of a hematoxylin and eosin (H&E) stained section of ganglion demonstrating diffuse involvement of reactive and neoplastic lymphocytes.**



**eFigure 2. High magnification images of the ganglion.**



(A): H&E stain of the ganglion with large, eosinophilic ganglion cells, along with small, blue, reactive T lymphocytes and large, atypical lymphocytes. (B): CD20 stain highlighting atypical, neoplastic B cells. (C): S100 stain highlighting the nuclei and cytoplasm of the Schwann cells, representing residual nerve tissue. (D): Ki- 67 stain highlighting proliferating neoplastic lymphocytes. The Ki-67 index was determined to be 75%.