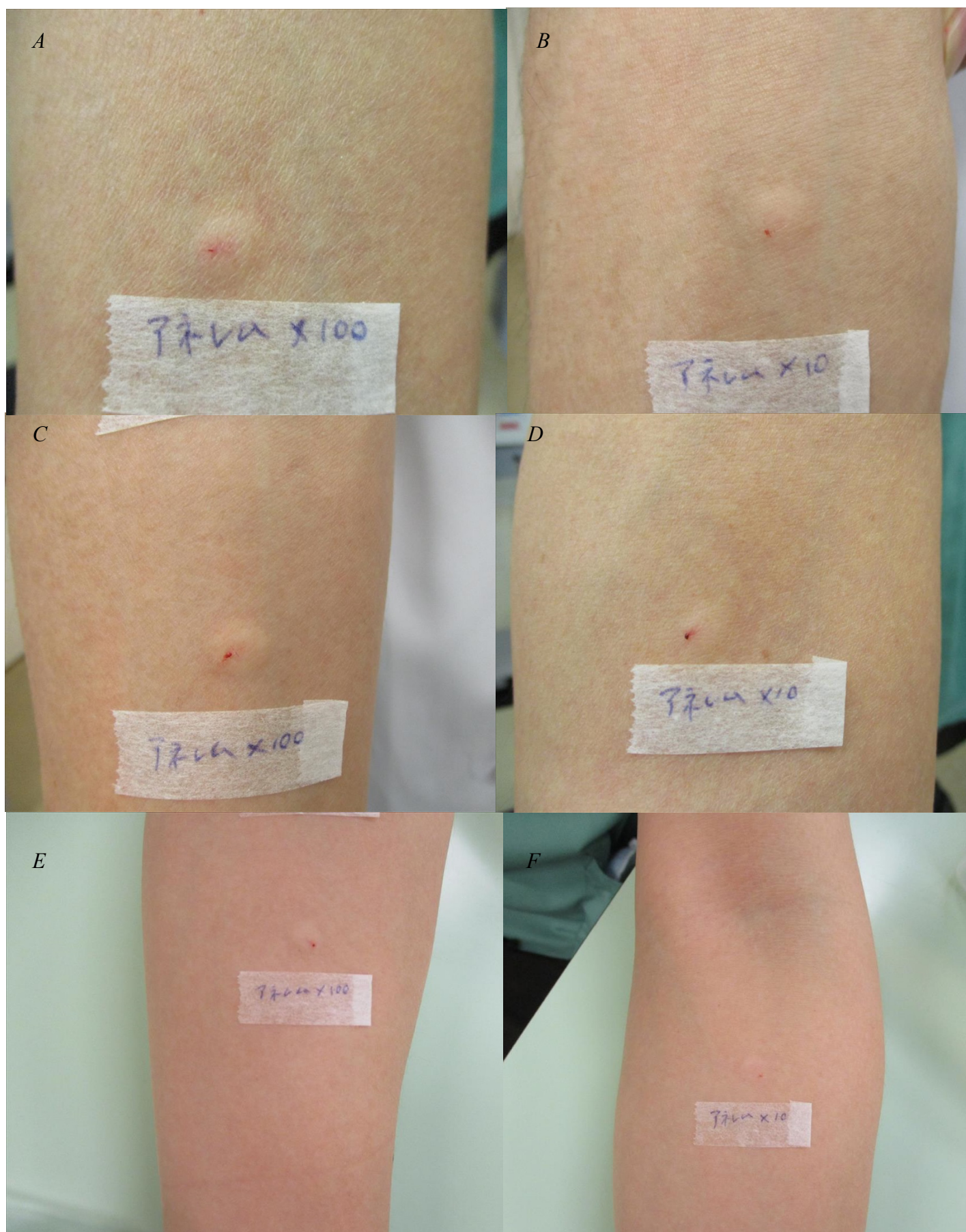


REMIMAZOLAM-INDUCED ANAPHYLAXIS

Supplemental Figure 6. The intradermal test shows the irritant nature of remimazolam solution in healthy volunteers.



REMIMAZOLAM-INDUCED ANAPHYLAXIS

^A Remimazolam solution diluted 1:100 in saline, 0.01 mg/mL in healthy volunteer 1

^B Remimazolam solution diluted 1:10 in saline, 0.1 mg/mL in healthy volunteer 1

^C Remimazolam solution diluted 1:100 in saline, 0.01 mg/mL in healthy volunteer 2

^D Remimazolam solution diluted 1:10 in saline, 0.1 mg/mL in healthy volunteer 2

^E Remimazolam solution diluted 1:100 in saline, 0.01 mg/mL in healthy volunteer 3

^F Remimazolam solution diluted 1:10 in saline, 0.1 mg/mL in healthy volunteer 3
