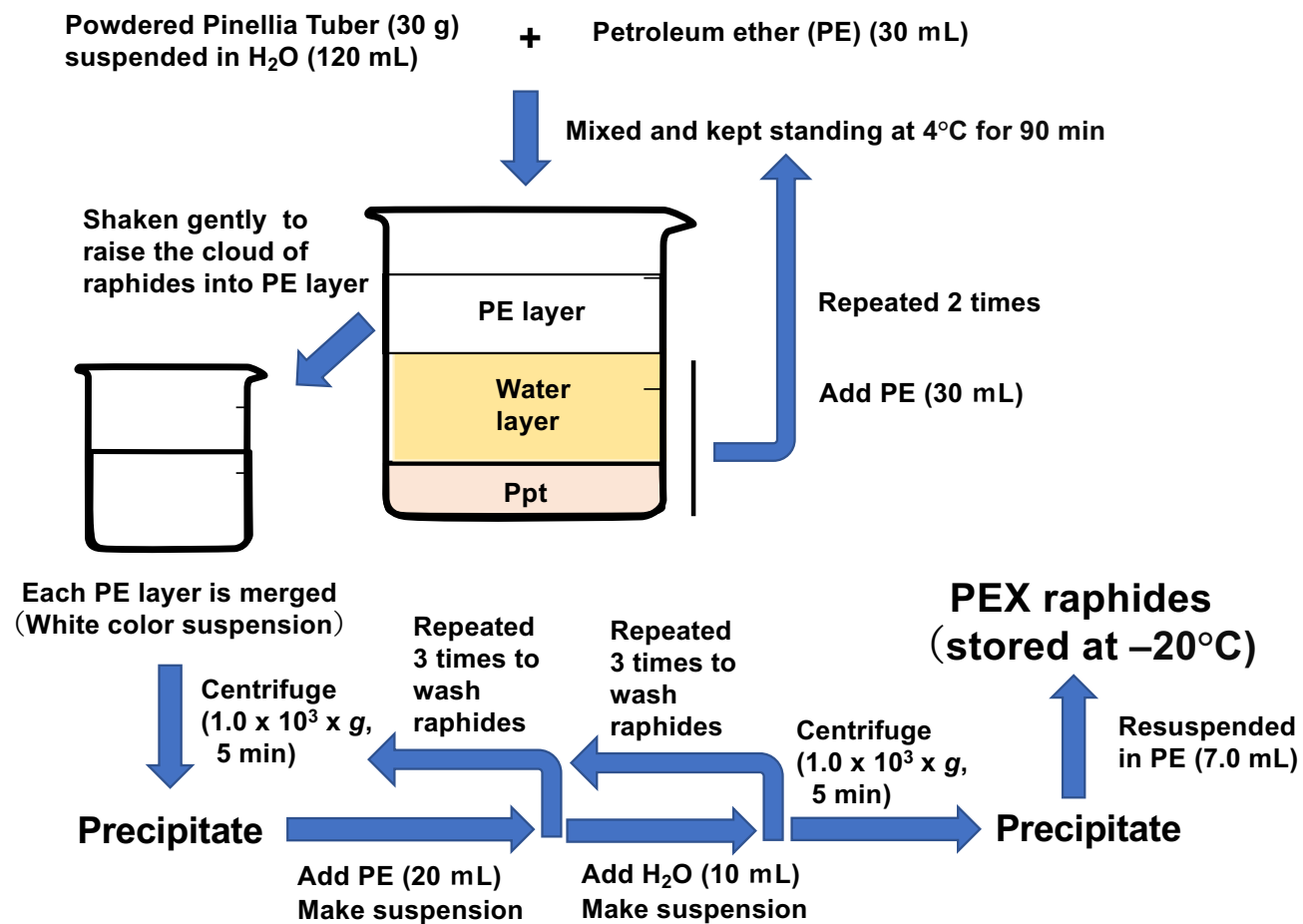
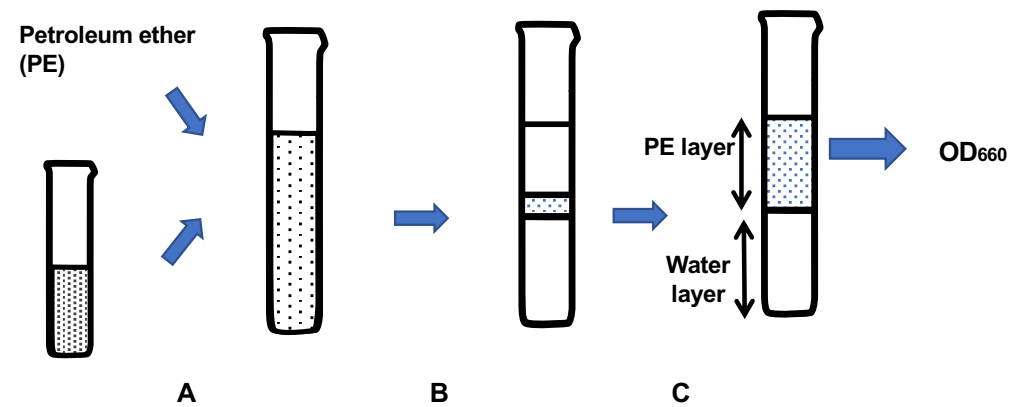


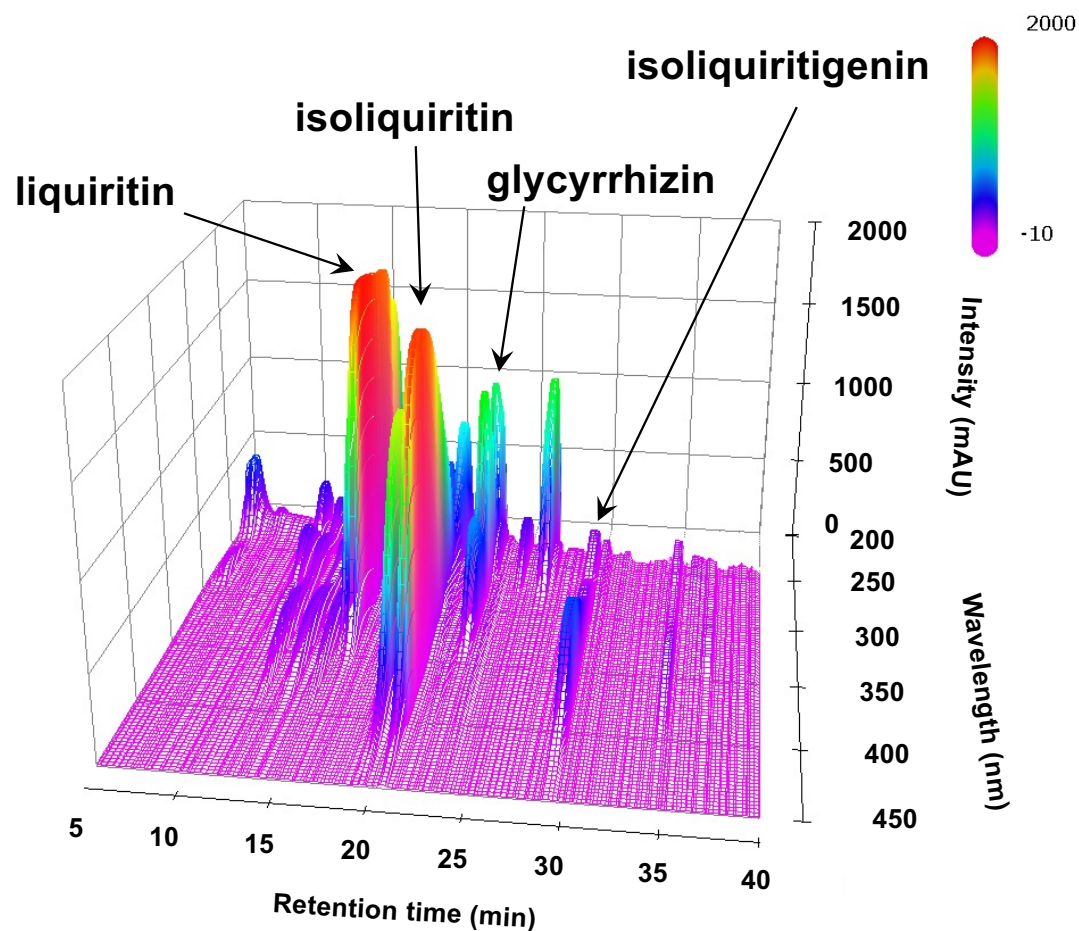
**Supplementary Fig. 1.** The scheme of the preparation low starch Pinellia tuber suspension (LSPS) from powdered Pinellia Tuber.



**Supplementary Fig. 2.** The scheme of the preparation for PE extract (PEX) raphides from powdered Pinellia Tuber.



**Supplementary Fig. 3.** The scheme of the raphides denaturation assay (RDA) [13].



**Supplementary Fig. 4.** (A) The extract of Glycyrrhiza (0.54 mg) in methanol (10  $\mu$ l) was injected to HPLC with the following conditions: system, Shimadzu LC-10A<sub>VP</sub> (Kyoto, Japan); column, TSK-GEL ODS-80<sub>TS</sub> (4.6  $\times$  250 mm, Tosoh, Tokyo); mobile phase, 0.05 M AcOH-AcONH<sub>4</sub> buffer (pH 3.6)/CH<sub>3</sub>CN 90:10 (0 min) – 0:100 (60 min), linear gradient; flow rate, 1.0 ml/min; column temperature, 40°C; and detection, 200 – 400 nm by a photodiode array detector. Some peaks were identified by the retention times and UV spectra of the standard compounds.