

### CSE Technique

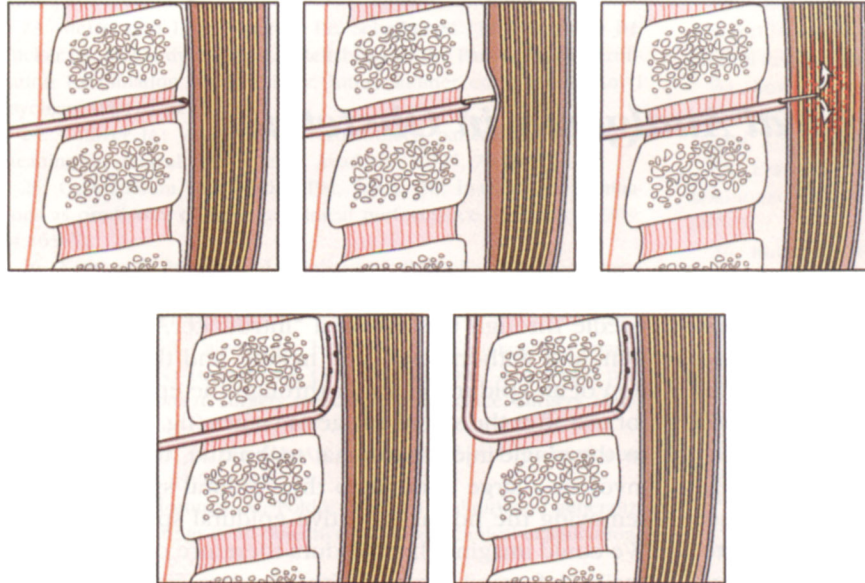


Fig. 1. The combined spinal-epidural technique. Typically, an epidural needle is inserted in the epidural space (*top left*) and a spinal needle is inserted through it (*top middle*). Because of the presence of air in the epidural space, the pencil-point spinal needle may deform the dura considerably before puncturing it (*top right*). After injection through the spinal needle, it is withdrawn, an epidural catheter is inserted (*bottom left*), and the epidural needle is withdrawn (*bottom right*).