

Figure S1.

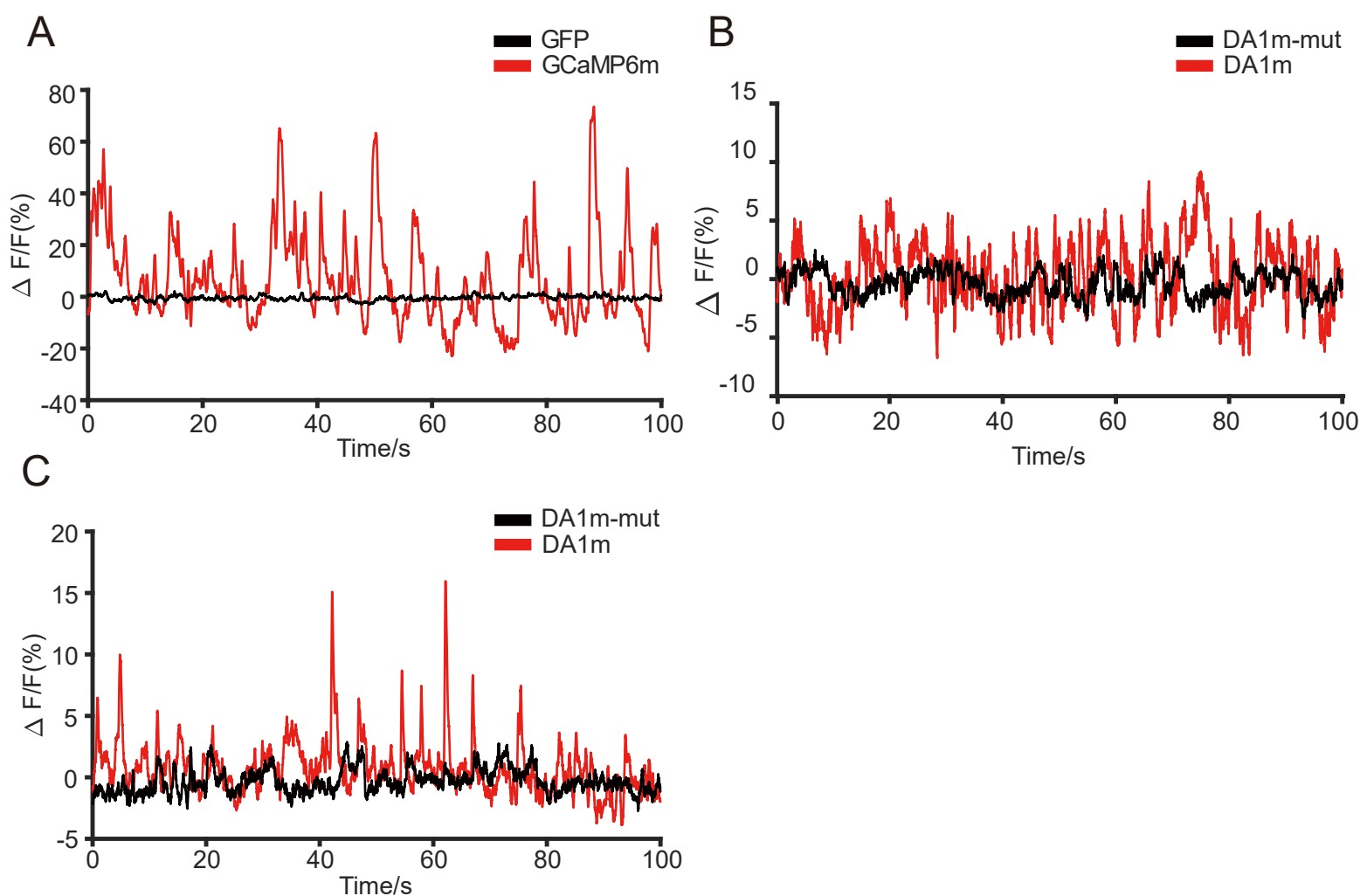


Figure S1. Fiber recording results showed the viruses were functionally available.

(A) Representative fluorescence traces during chamber exploration from the DAT-Cre mice expressing GCaMP6m(red) or GFP (black) in the ventral tegmental area dopamine neurons.

(B) Representative fluorescence traces during chamber exploration from C57BL/6J mice expressing DA1m(red) or DA1m-mut(black) in the medial prefrontal cortex neurons.

(C) Representative fluorescence traces during chamber exploration from C57BL/6J mice expressing DA1m(red) or DA1m-mut(black) in the nucleus accumbens neurons. DA1m, encoded G protein-coupled receptor-activation-based dopamine sensor; DA1m-mut, mutant G protein-coupled receptor-activation-based dopamine sensor.