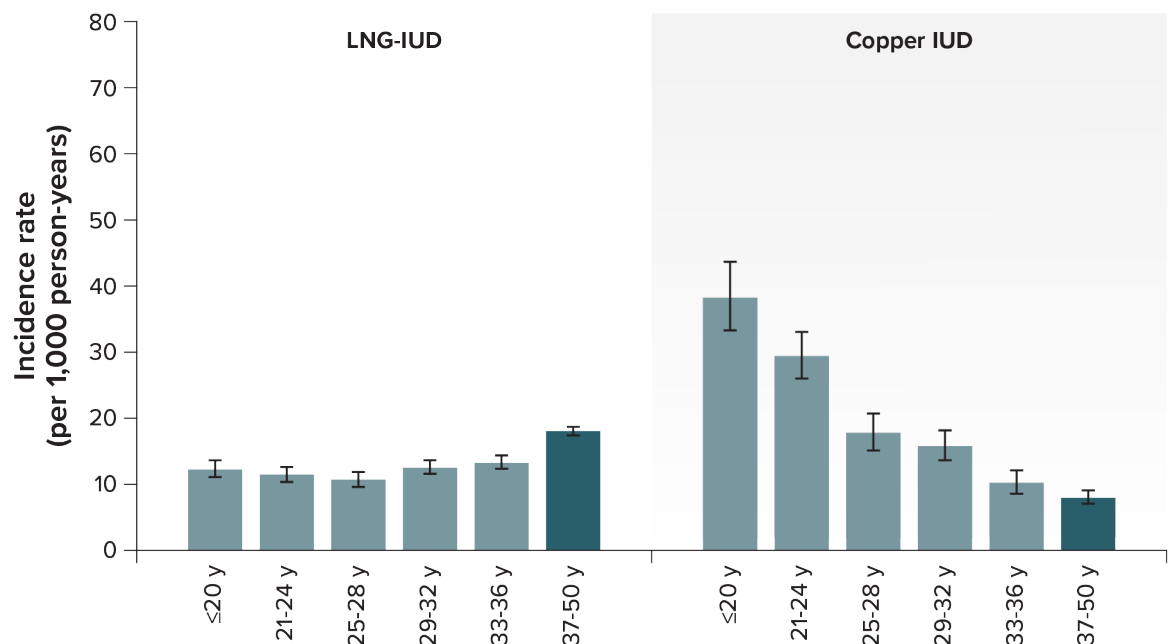
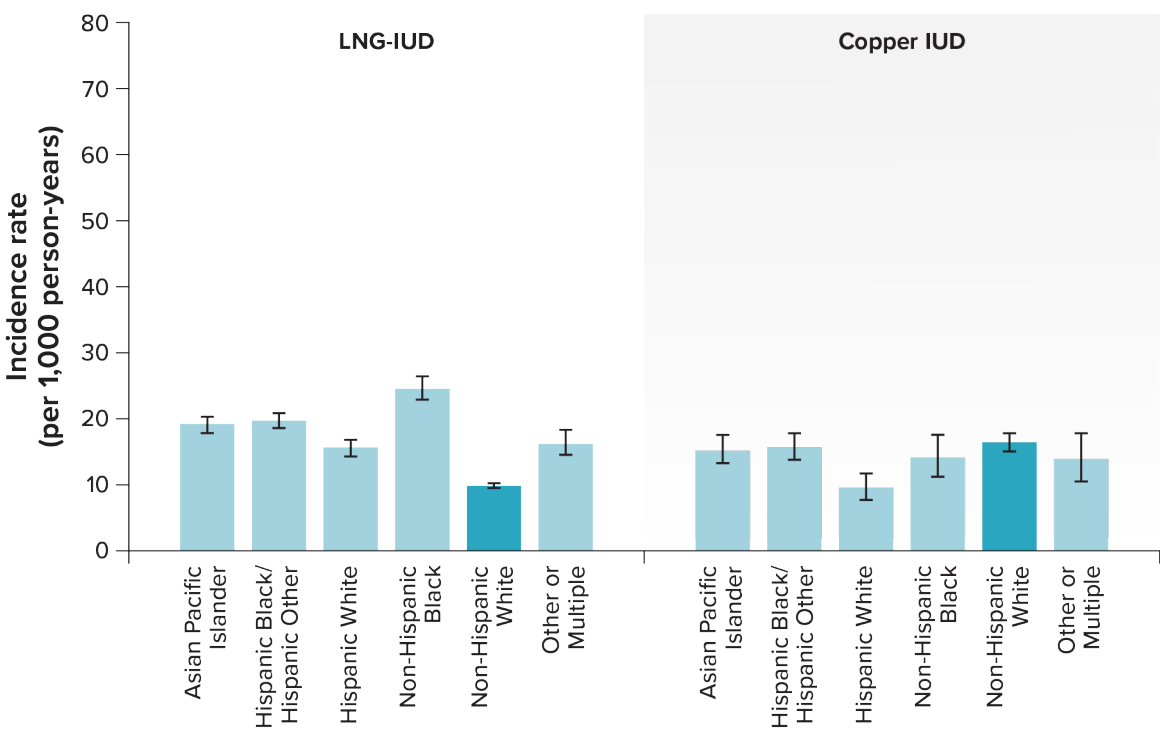


Appendix 1. Crude incidence rate (per 1,000 person-years) of intrauterine device (IUD) expulsion, by risk factor category and IUD type.

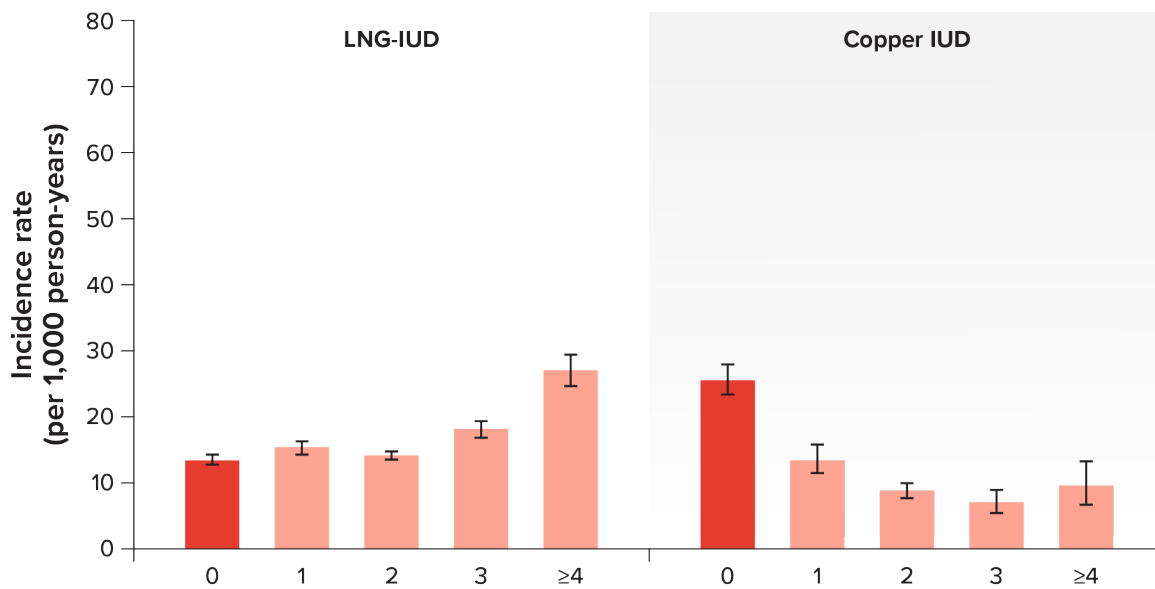
A Age



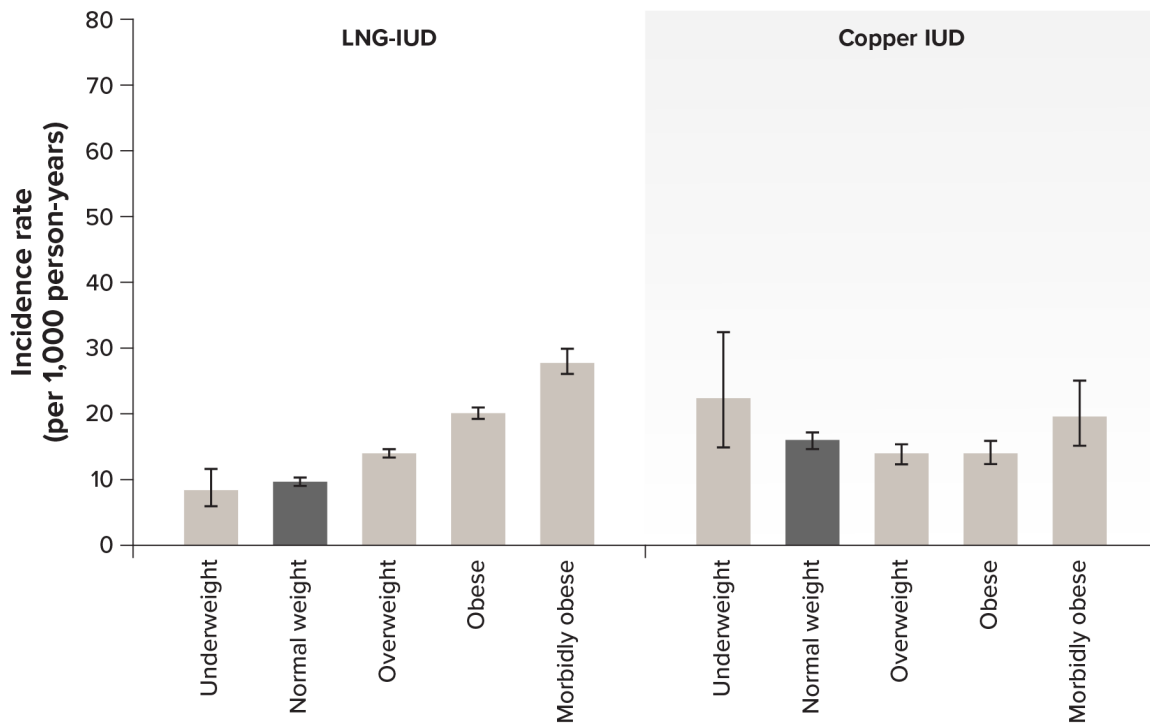
B Race/Ethnicity



C Parity



D Body mass index

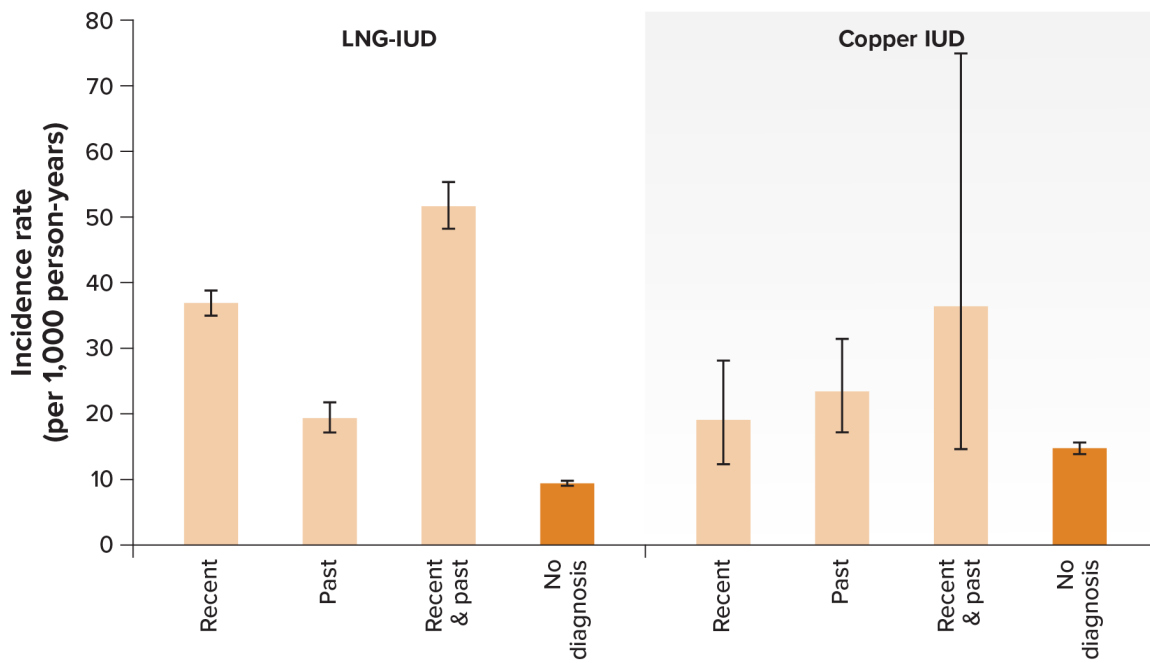


Anthony MS, Zhou X, Schoendorf J, Reed SD, Getahun D, Armstrong MA, et al. Demographic, reproductive, and medical risk factors for intrauterine device expulsion. *Obstet Gynecol* 2022;140.

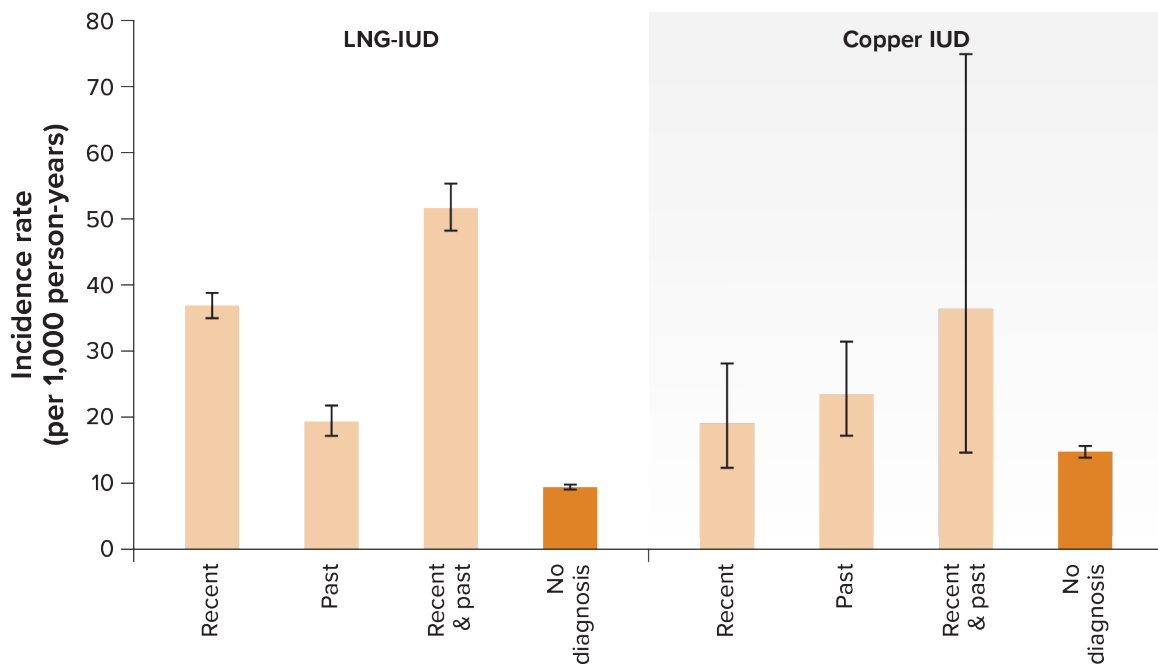
The authors provided this information as a supplement to their article.

©2022 American College of Obstetricians and Gynecologists.

E Menorrhagia



F HMB

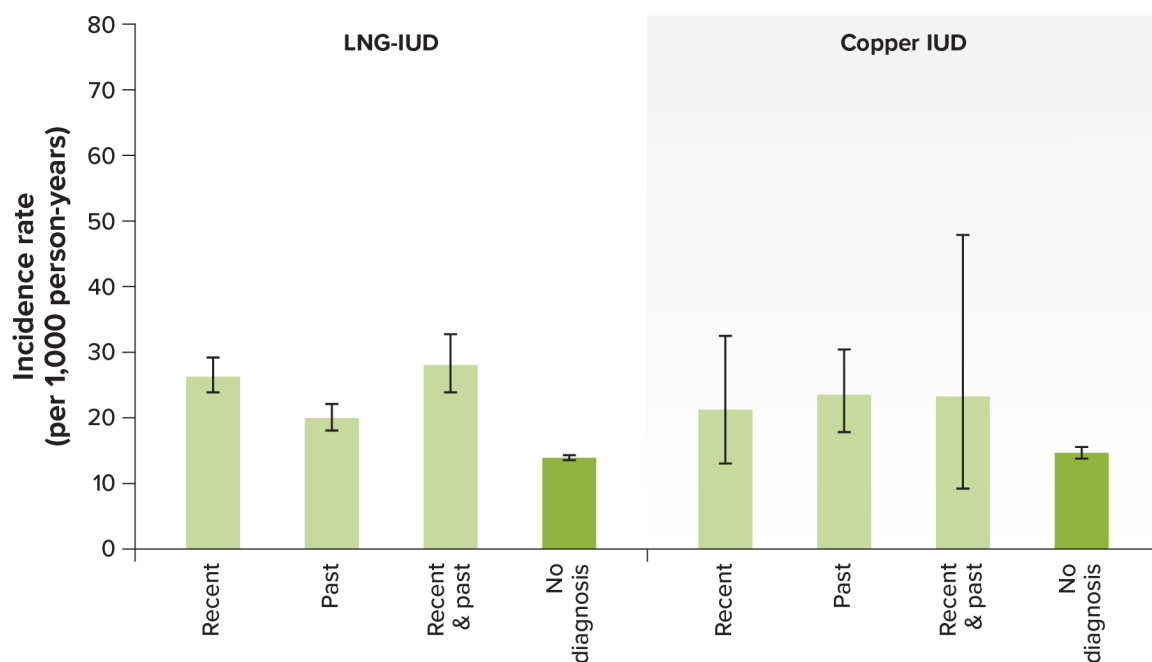


Anthony MS, Zhou X, Schoendorf J, Reed SD, Getahun D, Armstrong MA, et al. Demographic, reproductive, and medical risk factors for intrauterine device expulsion. *Obstet Gynecol* 2022;140.

The authors provided this information as a supplement to their article.

©2022 American College of Obstetricians and Gynecologists.

F Dysmenorrhea



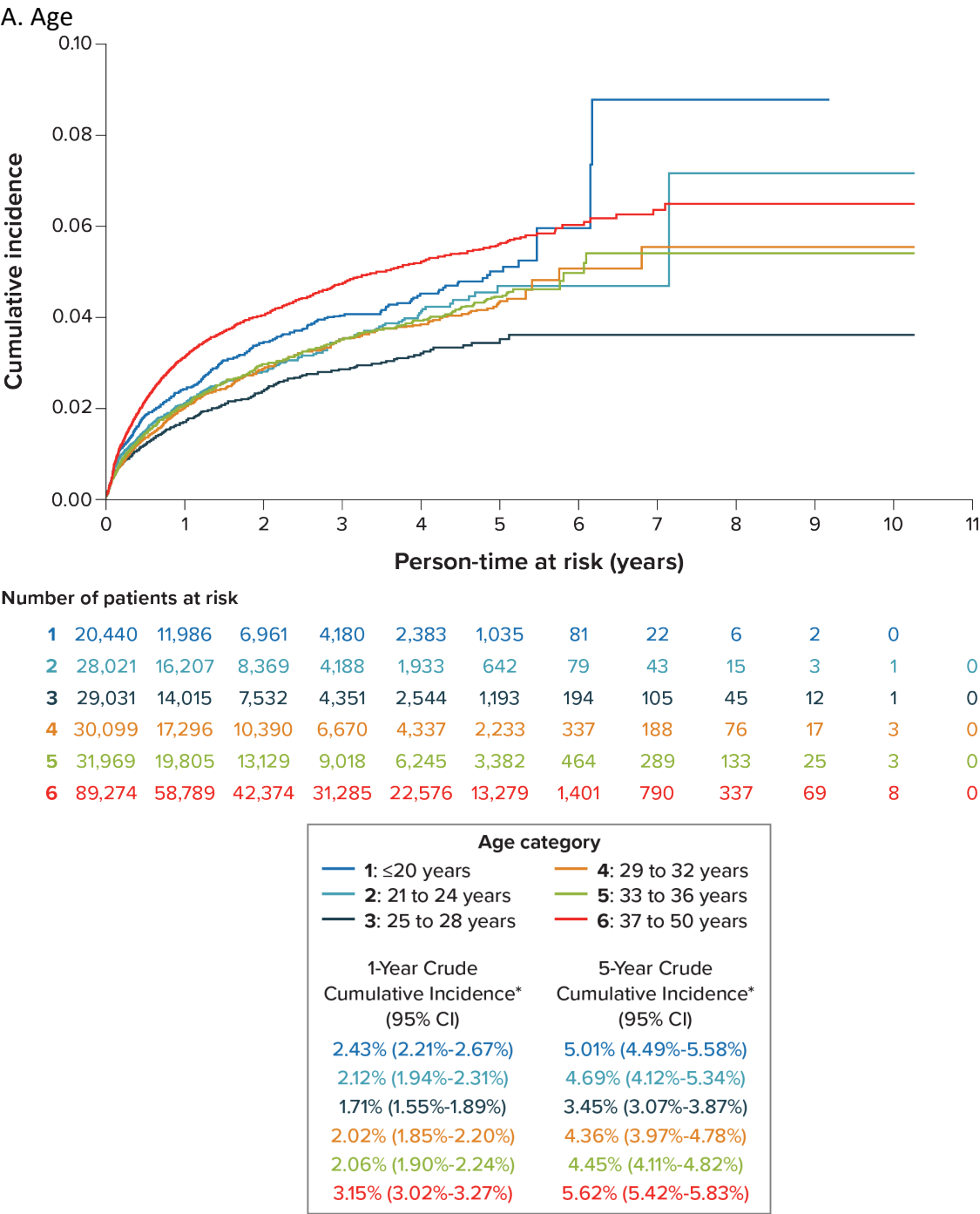
IUD, intrauterine device; LNG-IUD, levonorgestrel-releasing intrauterine system; HMB, heavy menstrual bleeding.

Anthony MS, Zhou X, Schoendorf J, Reed SD, Getahun D, Armstrong MA, et al. Demographic, reproductive, and medical risk factors for intrauterine device expulsion. *Obstet Gynecol* 2022;140.

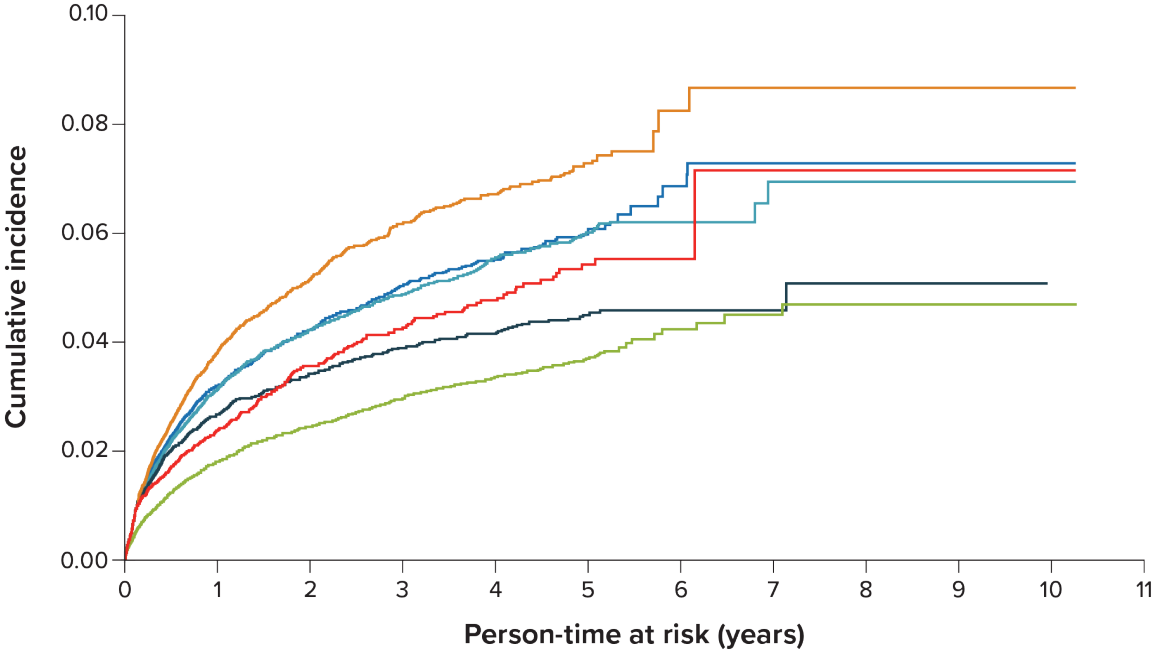
The authors provided this information as a supplement to their article.

©2022 American College of Obstetricians and Gynecologists.

Appendix 2. Crude cumulative incidence of IUD expulsion by risk factor category. The scale of the y-axis differs across risk factors. *Crude estimates of cumulative incidence, defined as the number of incident outcomes occurring during a specific time period out of the number of IUD insertions during the same time period, were estimated using the Kaplan-Meier method. †Percentage of insertions with unknown race and ethnicity: 2.3%. ‡Percentage of insertions missing parity: 18.3%. §Percentage of insertions missing BMI category: 2.2%.



B. Race and Ethnicity †

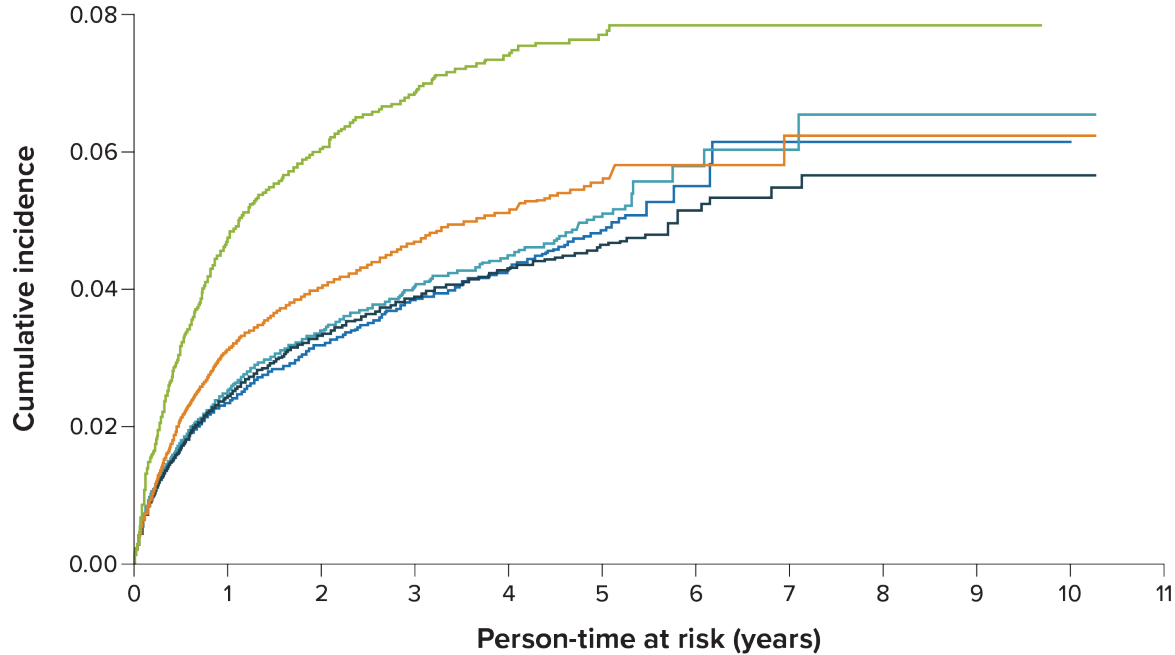


Number of patients at risk

1	26,344	16,344	10,971	7,671	5,332	2,937	463	251	106	15	1	0
2	41,226	24,120	15,278	10,148	6,712	3,594	430	232	103	22	3	0
3	22,150	13,794	9,156	6,524	4,578	2,573	369	220	118	27	0	0
4	20,727	12,130	7,747	5,217	3,577	1,980	221	123	52	11	3	0
5	101,546	62,370	39,999	26,501	17,466	9,409	909	522	210	50	8	0
6	11,514	6,922	4,401	2,956	1,955	1,067	126	70	15	2	1	0

Race/ethnicity	
1: Asian/Pacific Islander	4: Non-Hispanic Black
2: Hispanic Black or Hispanic Other	5: Non-Hispanic White
3: Hispanic White	6: None of the above or multiple
1-Year Crude Cumulative Incidence* (95% CI)	5-Year Crude Cumulative Incidence* (95% CI)
3.21% (2.98%-3.45%)	6.07% (5.66%-6.52%)
3.14% (2.96%-3.33%)	6.01% (5.66%-6.39%)
2.67% (2.45%-2.91%)	4.51% (4.14%-4.91%)
3.84% (3.56%-4.14%)	7.27% (6.75%-7.83%)
1.79% (1.71%-1.89%)	3.72% (3.54%-3.91%)
2.38% (2.09%-2.70%)	5.43% (4.79%-6.15%)

C. Parity ‡



Number of patients at risk

0	61,915	34,559	19,406	11,454	6,560	2,915	325	147	40	7	1	0
1	34,382	20,702	13,541	9,262	6,292	3,415	383	205	94	23	2	0
2	55,053	36,333	25,953	19,293	13,892	7,941	991	602	263	45	1	0
3	24,822	16,171	11,499	8,416	5,994	3,409	397	209	85	14	3	0
≥ 4	10,759	6631	4675	3,365	2,446	1,448	174	100	49	12	0	

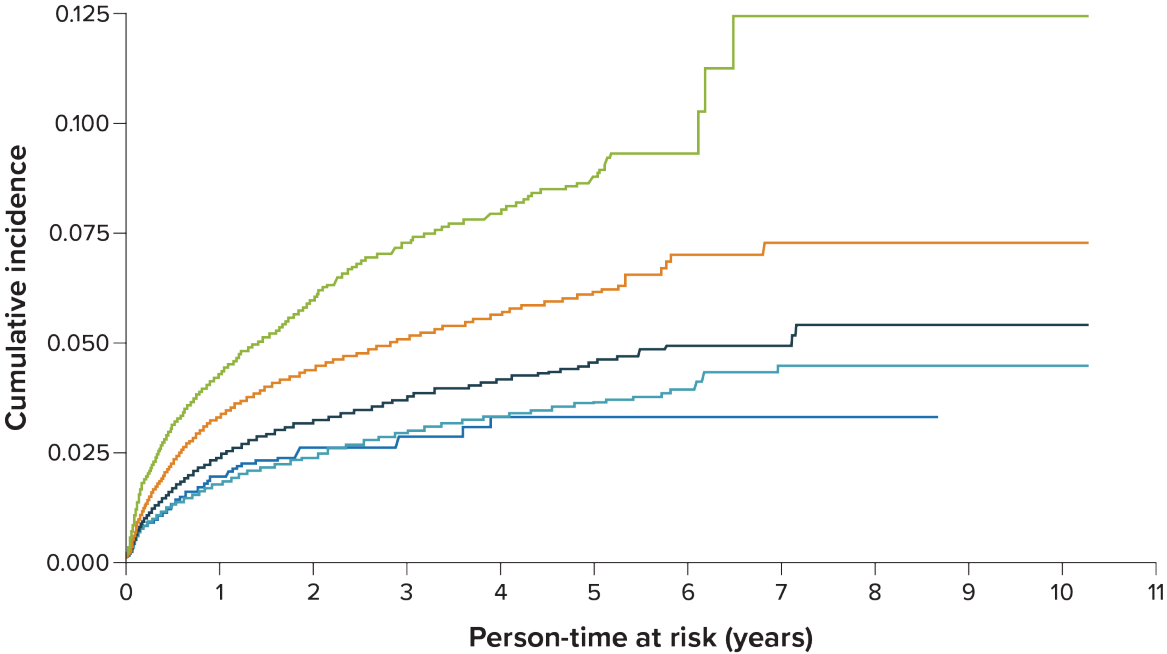
Parity	
0	1
2	3
≥4	
1-Year Crude Cumulative Incidence* (95% CI)	5-Year Crude Cumulative Incidence* (95% CI)
2.37% (2.24%-2.50%)	4.88% (4.56%-5.22%)
2.52% (2.35%-2.71%)	5.09% (4.73%-5.47%)
2.43% (2.30%-2.58%)	4.67% (4.43%-4.92%)
3.12% (2.89%-3.37%)	5.59% (5.21%-6.00%)
4.71% (4.29%-5.17%)	7.71% (7.06%-8.41%)

Anthony MS, Zhou X, Schoendorf J, Reed SD, Getahun D, Armstrong MA, et al. Demographic, reproductive, and medical risk factors for intrauterine device expulsion. *Obstet Gynecol* 2022;140.

The authors provided this information as a supplement to their article.

©2022 American College of Obstetricians and Gynecologists.

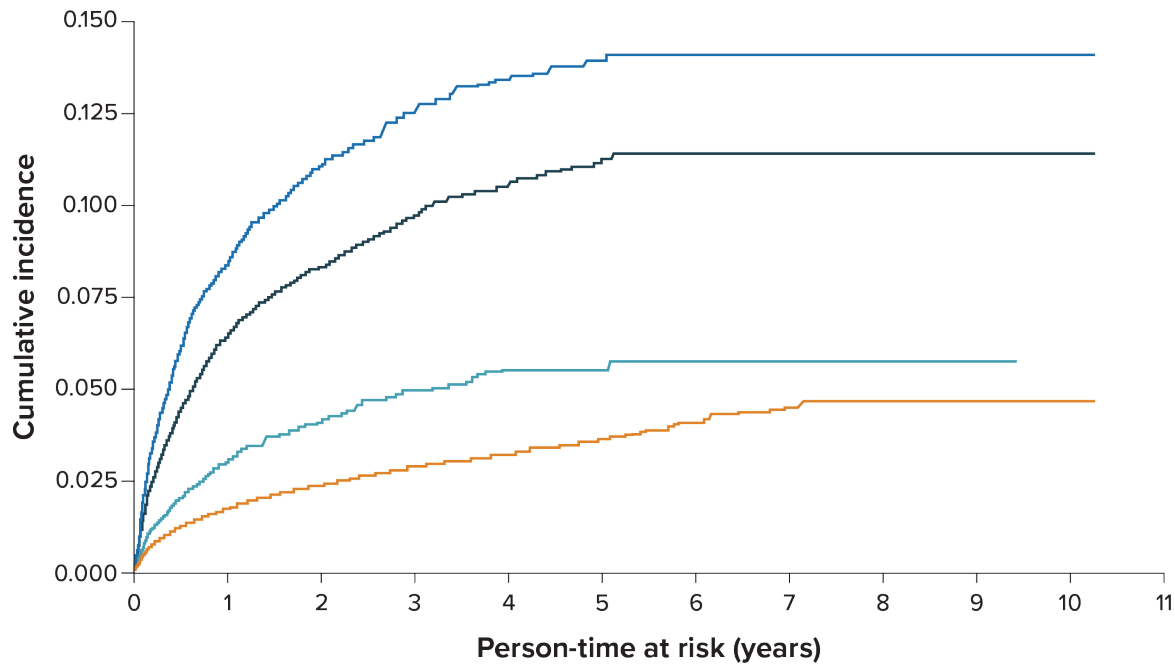
D. Body Mass Index §



Number of patients at risk												
1	3,123	1,798	1,102	699	416	208	33	17	2	0		
2	84,291	50,781	32,432	21,570	14,158	7,486	1,057	567	252	53	7	0
3	62,693	38,099	24,736	16,891	11,382	6,247	816	476	205	42	4	0
4	56,501	34,198	22,246	15,290	10,499	5,822	530	308	120	24	2	0
5	17,232	10,476	6,810	4,600	3,180	1,763	107	61	28	7	2	0

BMI category	
1: Underweight (<18.5 kg/m ²)	4: Obese (30.0 to 39.9 kg/m ²)
2: Normal weight (18.5 to 24.9 kg/m ²)	5: Morbidly obese (≥40 kg/m ²)
3: Overweight (25.0 to 29.9 kg/m ²)	
1-Year Crude Cumulative Incidence* (95% CI)	5-Year Crude Cumulative Incidence* (95% CI)
1.94% (1.47%-2.56%)	3.29% (2.46%-4.39%)
1.78% (1.69%-1.88%)	3.64% (3.44%-3.85%)
2.39% (2.26%-2.52%)	4.55% (4.31%-4.81%)
3.32% (3.16%-3.49%)	6.14% (5.85%-6.44%)
4.23% (3.91%-4.57%)	8.81% (8.18%-9.48%)

E. HMB



Number of patients at risk

1	8,990	5,016	3,251	2,154	1,389	692	7	5	2	1	1	0
2	22,610	13,354	9,189	6,570	4,634	2,719	50	28	13	5	1	0
3	10,135	5,561	3,214	1,899	1,141	544	28	17	4	2	0	
4	187,099	114,167	73,101	49,069	32,854	17,809	2,471	1,387	593	120	14	0

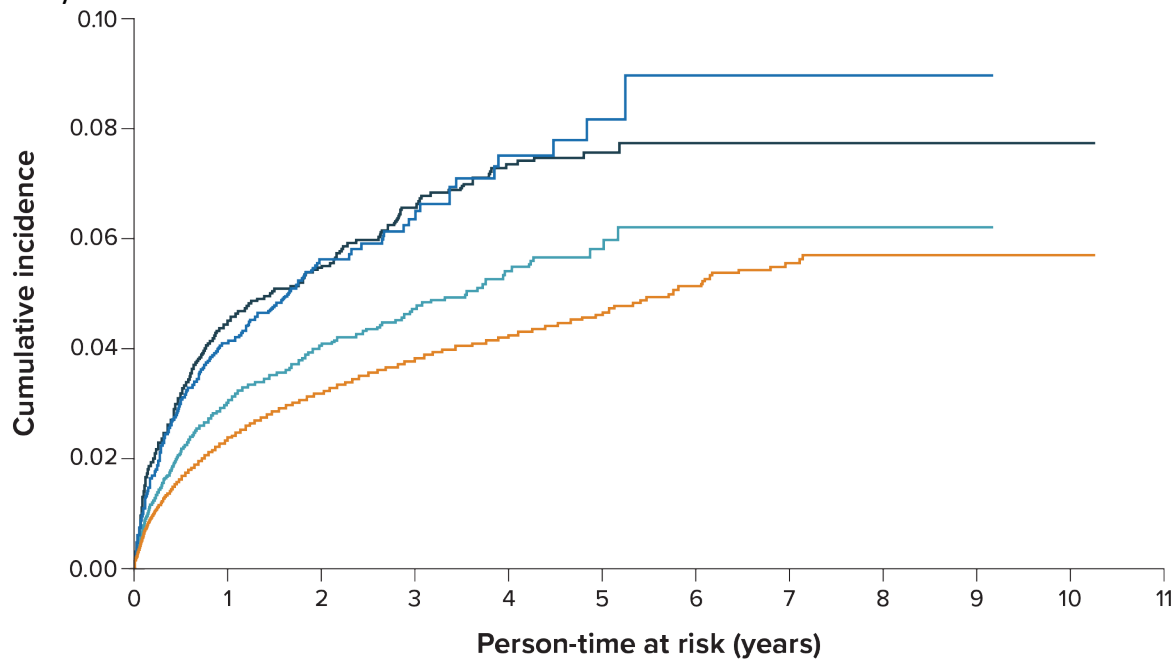
Menorrhagia			
1: Diagnosis of HMB in recent and past periods		3: Past diagnosis of HMB (>1 year before index date only)	
2: Recent diagnosis of HMB (≤1 year before index date only)		4: No diagnosis of HMB	
1-Year Crude Cumulative Incidence* (95% CI)		5-Year Crude Cumulative Incidence* (95% CI)	
8.37% (7.76%-9.02%)		13.96% (12.96%-15.03%)	
6.46% (6.11%-6.82%)		11.27% (10.70%-11.87%)	
3.03% (2.67%-3.43%)		5.54% (4.88%-6.29%)	
1.71% (1.64%-1.77%)		3.59% (3.46%-3.73%)	

Anthony MS, Zhou X, Schoendorf J, Reed SD, Getahun D, Armstrong MA, et al. Demographic, reproductive, and medical risk factors for intrauterine device expulsion. Obstet Gynecol 2022;140.

The authors provided this information as a supplement to their article.

©2022 American College of Obstetricians and Gynecologists.

F. Dysmenorrhea



Dysmenorrhea	
1: Diagnosis of dysmenorrhea in recent and past periods	
2: Recent diagnosis of dysmenorrhea (≤ 1 year before index date only)	
3: Past diagnosis of dysmenorrhea (> 1 year before index date only)	
4: No diagnosis of dysmenorrhea	
1-Year Crude Cumulative Incidence* (95% CI)	5-Year Crude Cumulative Incidence* (95% CI)
4.11% (3.47%-4.88%)	8.18% (6.69%-9.98%)
4.49% (4.04%-4.99%)	7.58% (6.80%-8.45%)
3.03% (2.72%-3.38%)	5.80% (5.09%-6.61%)
2.34% (2.27%-2.42%)	4.67% (4.52%-4.81%)

IUD, intrauterine device; CI, confidence interval; BMI, body mass index; LNG-IUD, levonorgestrel-releasing intrauterine system; HMB, heavy menstrual bleeding.

Anthony MS, Zhou X, Schoendorf J, Reed SD, Getahun D, Armstrong MA, et al. Demographic, reproductive, and medical risk factors for intrauterine device expulsion. *Obstet Gynecol* 2022;140.

The authors provided this information as a supplement to their article.

©2022 American College of Obstetricians and Gynecologists.