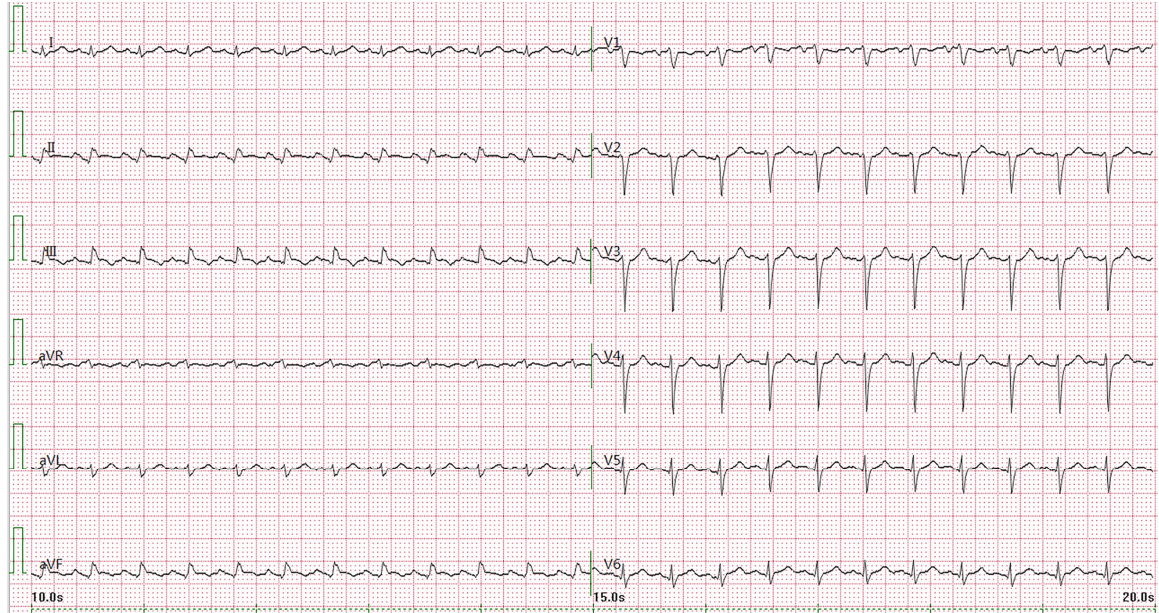
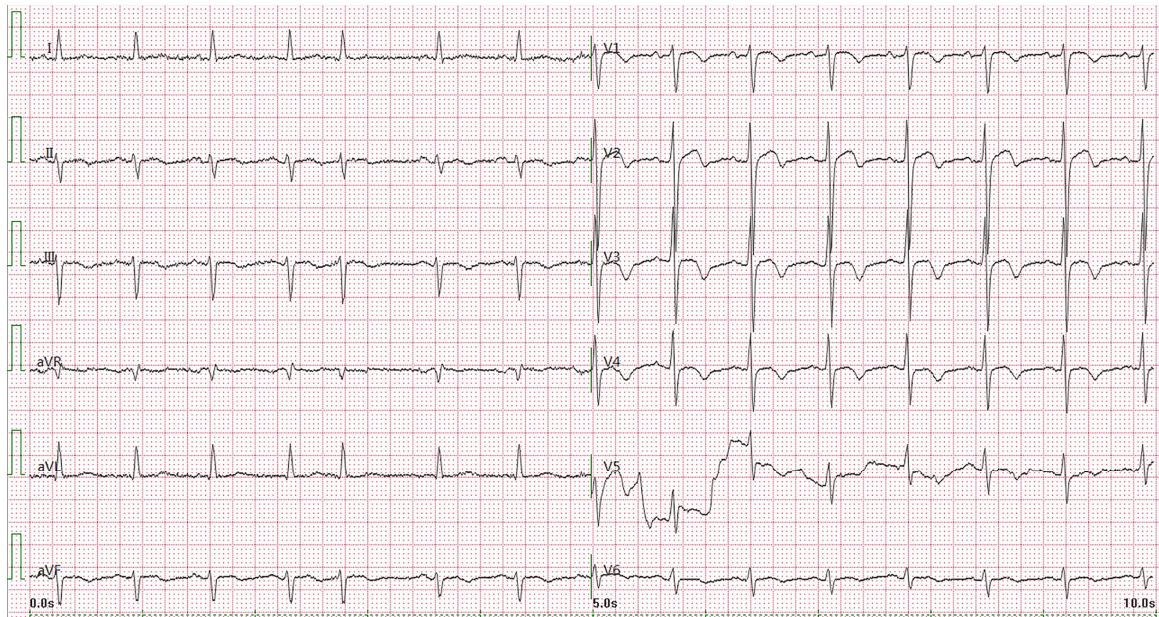


Supplementary Figure 1: Typical ECG changes of COVID-19 patients with myocardial injury. Typical ECG changes include: (A) low voltage, sinus tachycardia; (B) left anterior fascicular block, supraventricular premature beats; (C) ST-segment elevation, T-wave abnormal; and (D) ST-segment depression. COVID-19: Coronavirus disease 2019.

A

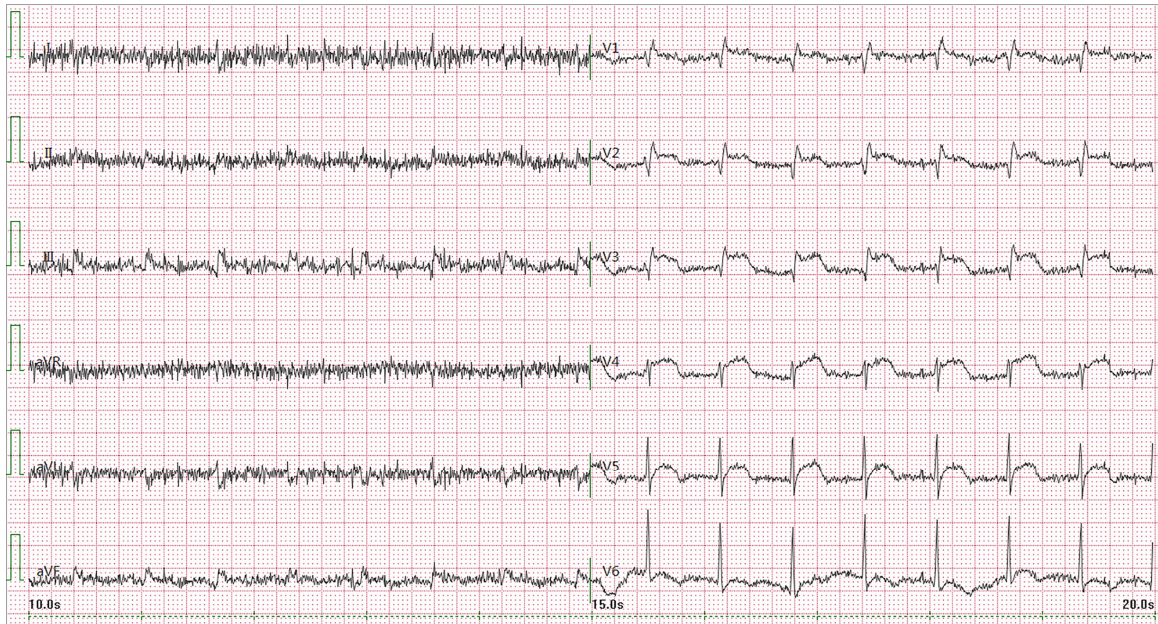


B



C





D

