

## **Supplemental Methods**

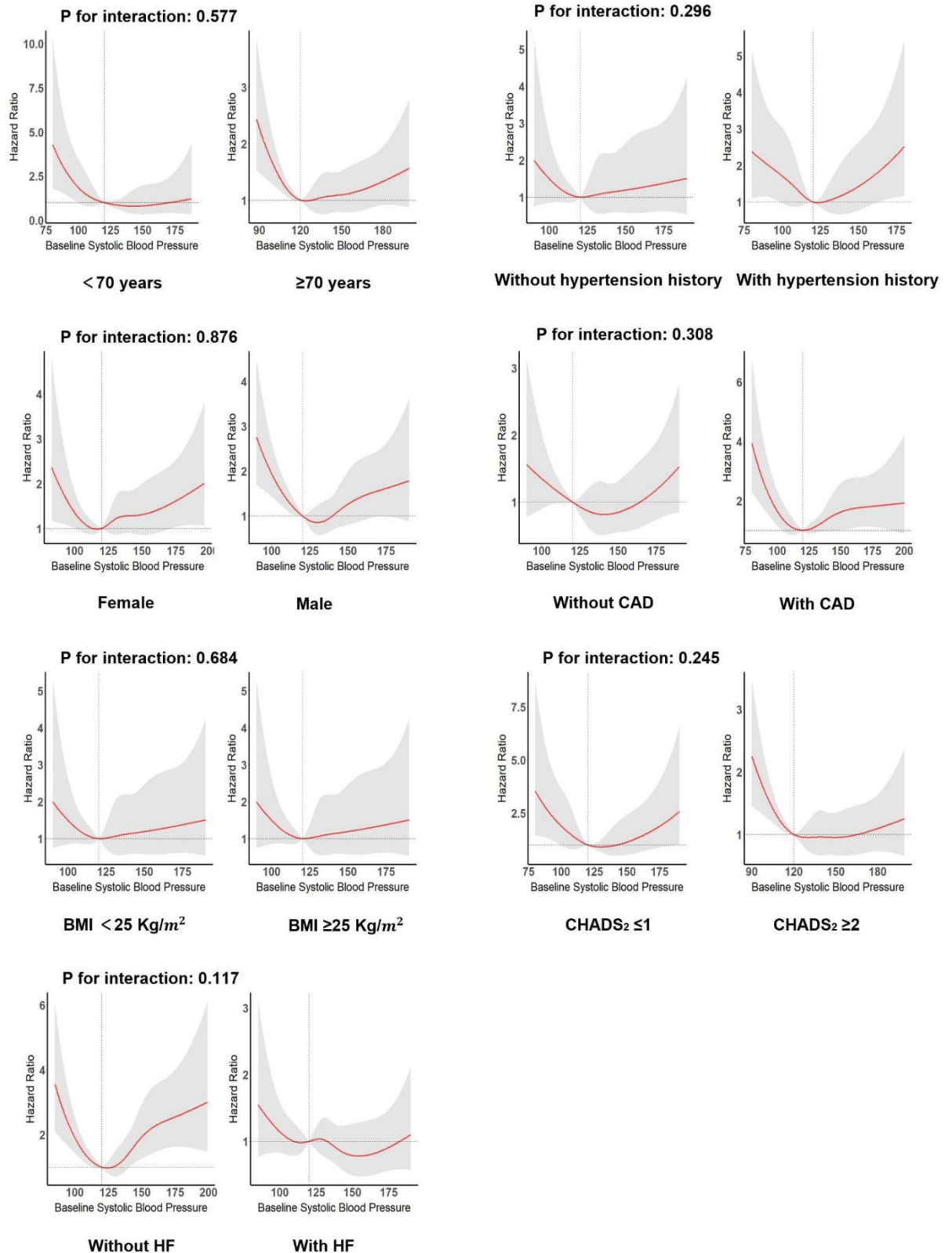
20 Centers in this registry study:

1. Fuwai Hospital Chinese Academy of Medical Sciences
2. Fu Xing Hospital, Capital Medical University
3. Pingdu People's Hospital of Shandong Province
4. Qingdao Municipal Hospital
5. West China Hospital
6. The Sixth People's Hospital of Chengdu
7. The First Hospital of China Medical University
8. Langfang Fourth People's Hospital
9. Ruijin Hospital, Shanghai Jiao Tong University
10. Yichang First Hospital
11. Wuhan Union Hospital, Huazhong University of Science and Technology
12. Wuhan Central Hospital
13. Guangdong Provincial People's Hospital
14. Qingdao Municipal Hospital
15. Guangzhou First People's Hospital
16. The First Hospital of Qiqihar
17. Beijing Chaoyang Hospital, Capital Medical University
18. Affiliated Hospital of North Sichuan Medical College
19. Gongli Hospital, Pudong New Area, Shanghai
20. Bethune International Peace Hospital

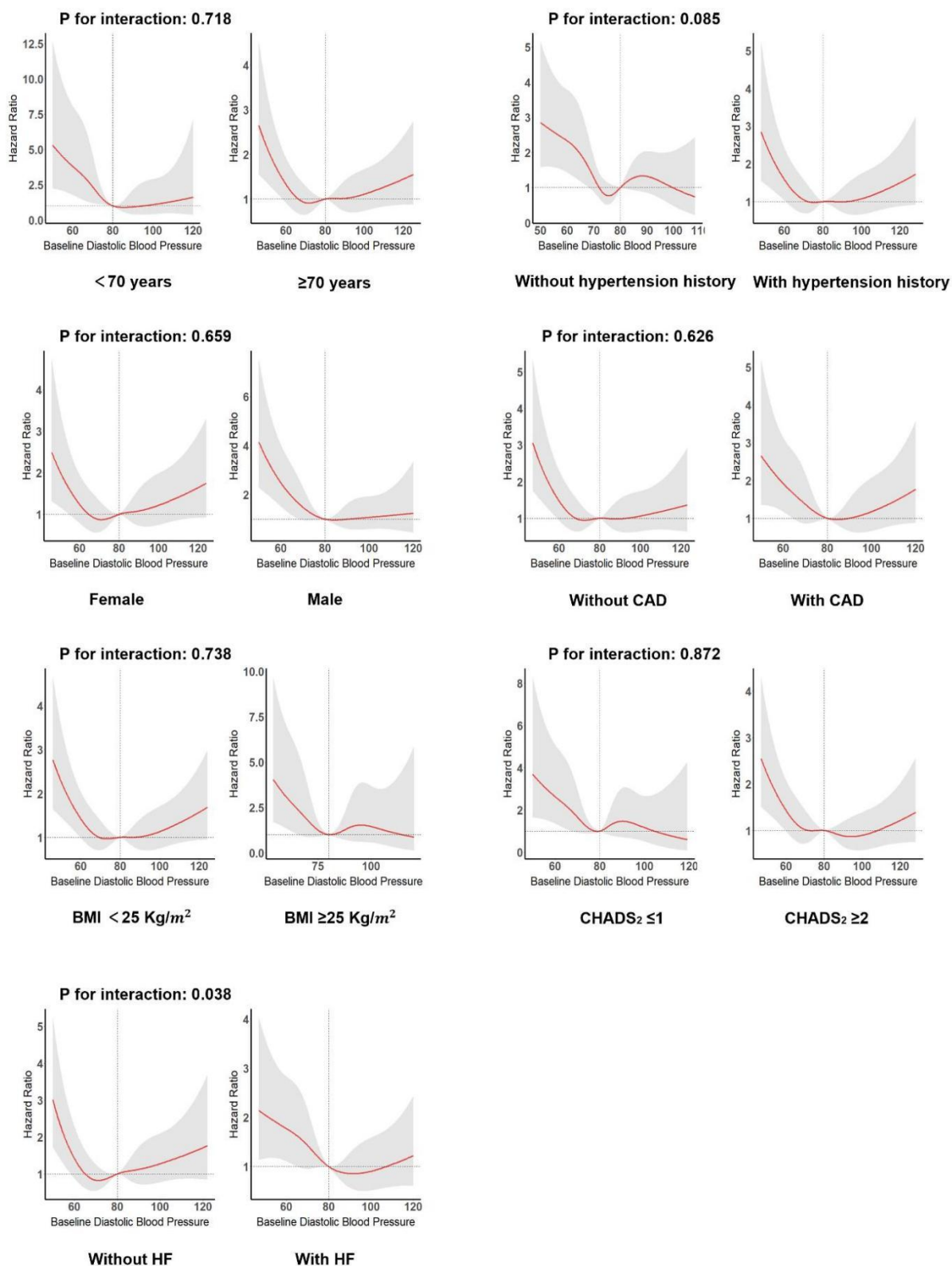
**Supplementary Table 1: Specific reasons for visiting the ED.**

Reasons for visiting the ED	<i>n</i> (%)
AF	819 (41.2)
HF	357 (17.9)
Palpitation	87 (4.4)
Coronary heart diseases	69 (3.5)
Stroke/TIA	88 (4.4)
Respiratory diseases	88 (4.4)
Fever	82 (4.1)
Hypertension	27 (1.4)
Infections	26 (1.3)
Other reasons	347 (17.4)

AF: Atrial fibrillation; ED: Emergency department; HF: Heart failure; TIA: Transient ischemic attack.



**Supplementary Figure 1:** Restricted cubic spline curves for the association between baseline SBP and all-cause death in subgroups. BMI: Body mass index; CAD: Coronary artery disease; HF: Heart failure; SBP: Systolic blood pressure.



**Supplementary Figure 2:** Restricted cubic spline curves for the association between baseline DBP and all-cause death in subgroups. BMI: Body mass index; CAD:

Coronary artery disease; DBP: Diastolic blood pressure; HF: Heart failure.