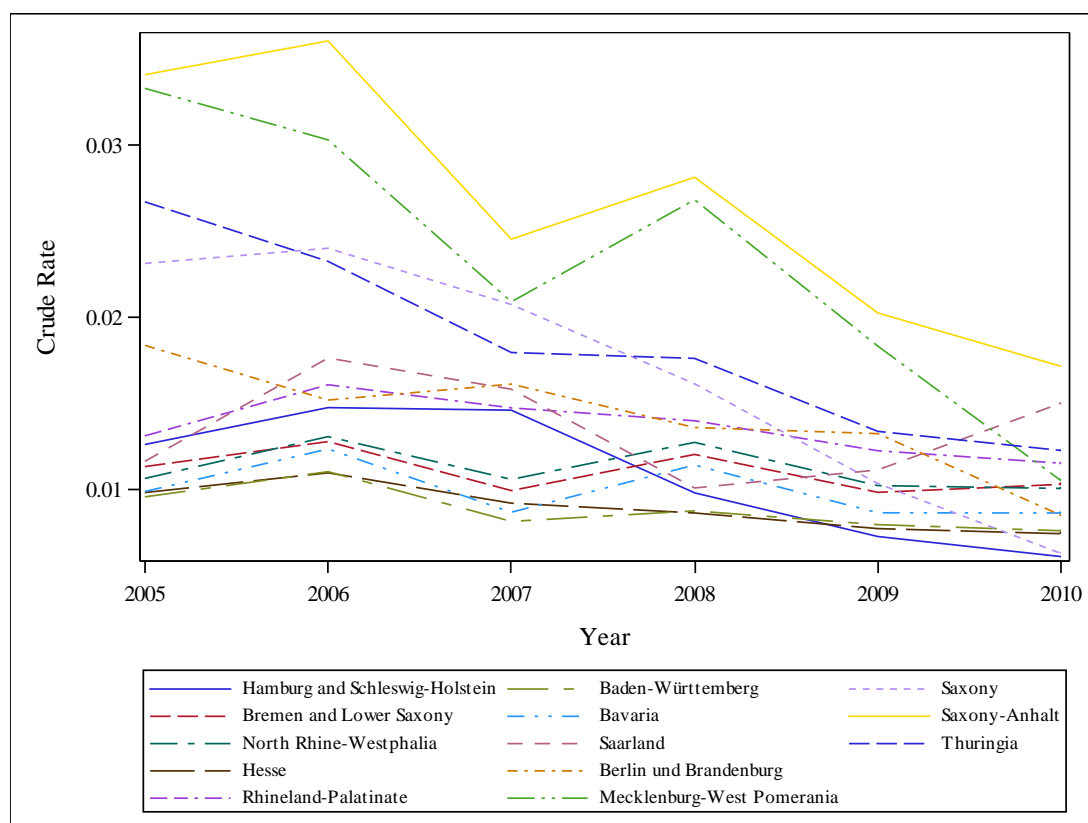
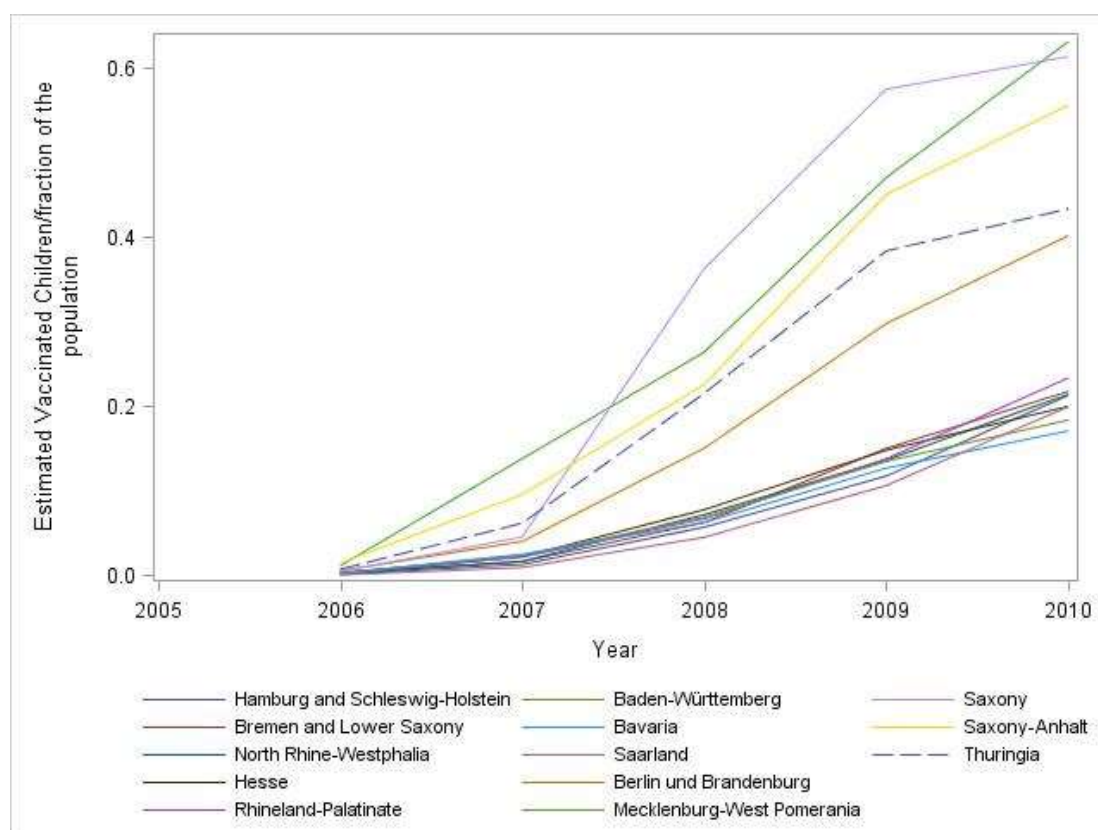


**A**



**B**



**Figure.** Cases of AGE in German federal states correlate inversely with recommended vaccination. CRs of rotavirus infection per 100,000 person-years for children less than 1 year of age in Germany listed by federal states from 2005 to 2010 (A). Estimated vaccinated children (<1 year of age) in Germany by federal states from 2005 to 2010 (B).