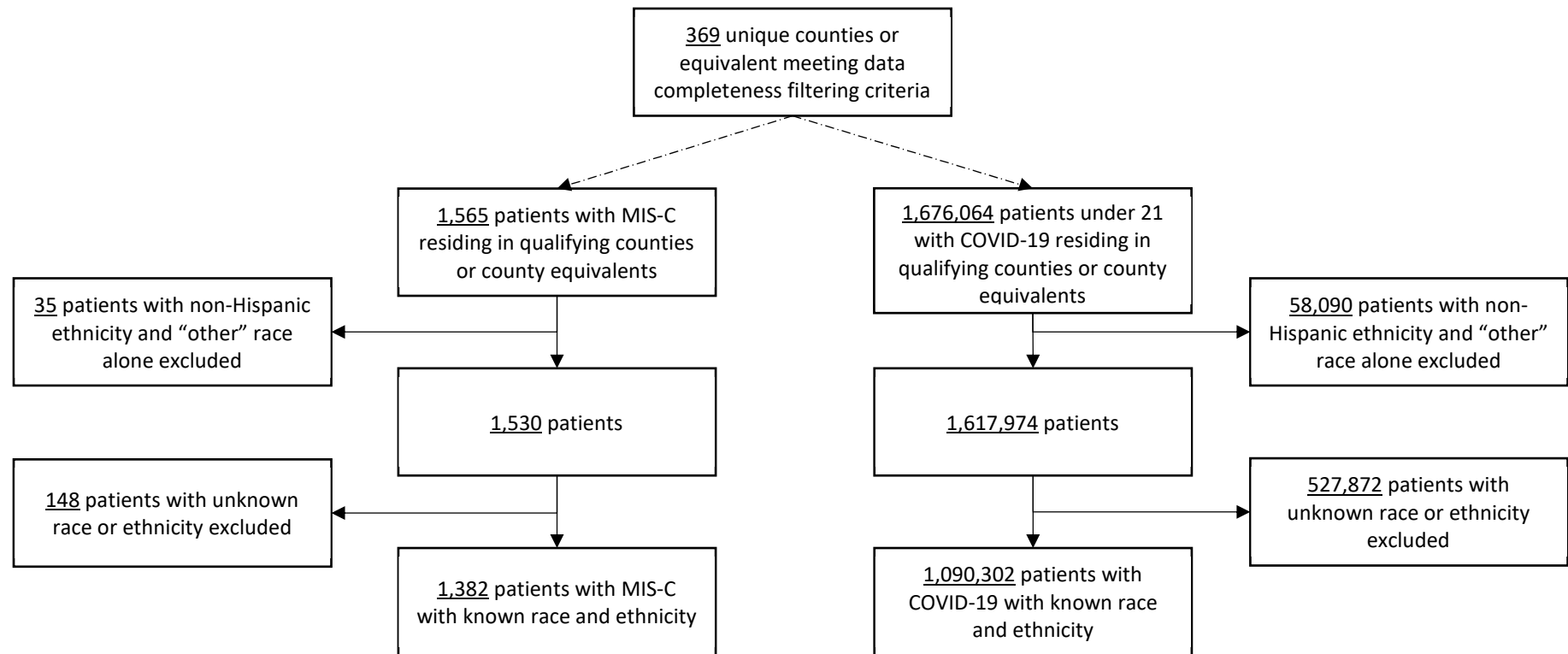


**Supplemental Digital Content 1 — Figure. Diagram of criteria for inclusion of counties, MIS-C patients, and COVID-19 patients.**



\*Patients with MIS-C without a known county of residence (or equivalent) and patients with MIS-C with unknown race alone and non-Hispanic ethnicity were excluded from analysis prior to calculating county level completeness.