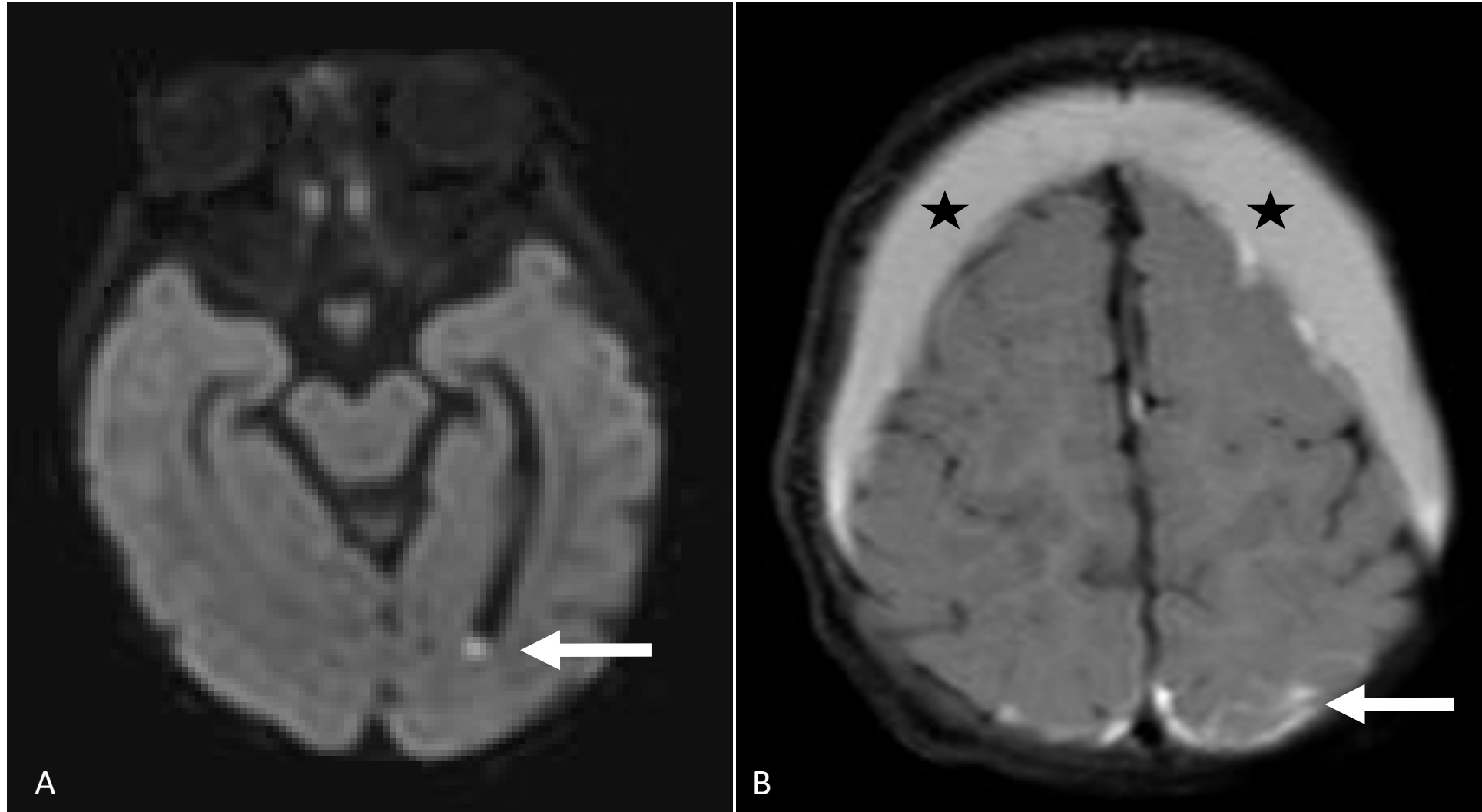


Supplemental Digital Content 3, Figure. MRI images for select patients with meningitis due to *Streptococcus gallolyticus*



A. Case 14 - Ax DWI (diffusion weighted image) image demonstrates restricted diffusion in the left occipital horn of the left lateral ventricle consistent with purulent debris (white arrow).

B. Case 15 - Ax T2 FLAIR postcontrast image demonstrates bilateral subdural fluid collections (star) overlying the anterior cerebral convexities. Leptomeningeal enhancement is present over the left parietal convexities (white arrow).