

Supplement Figure I

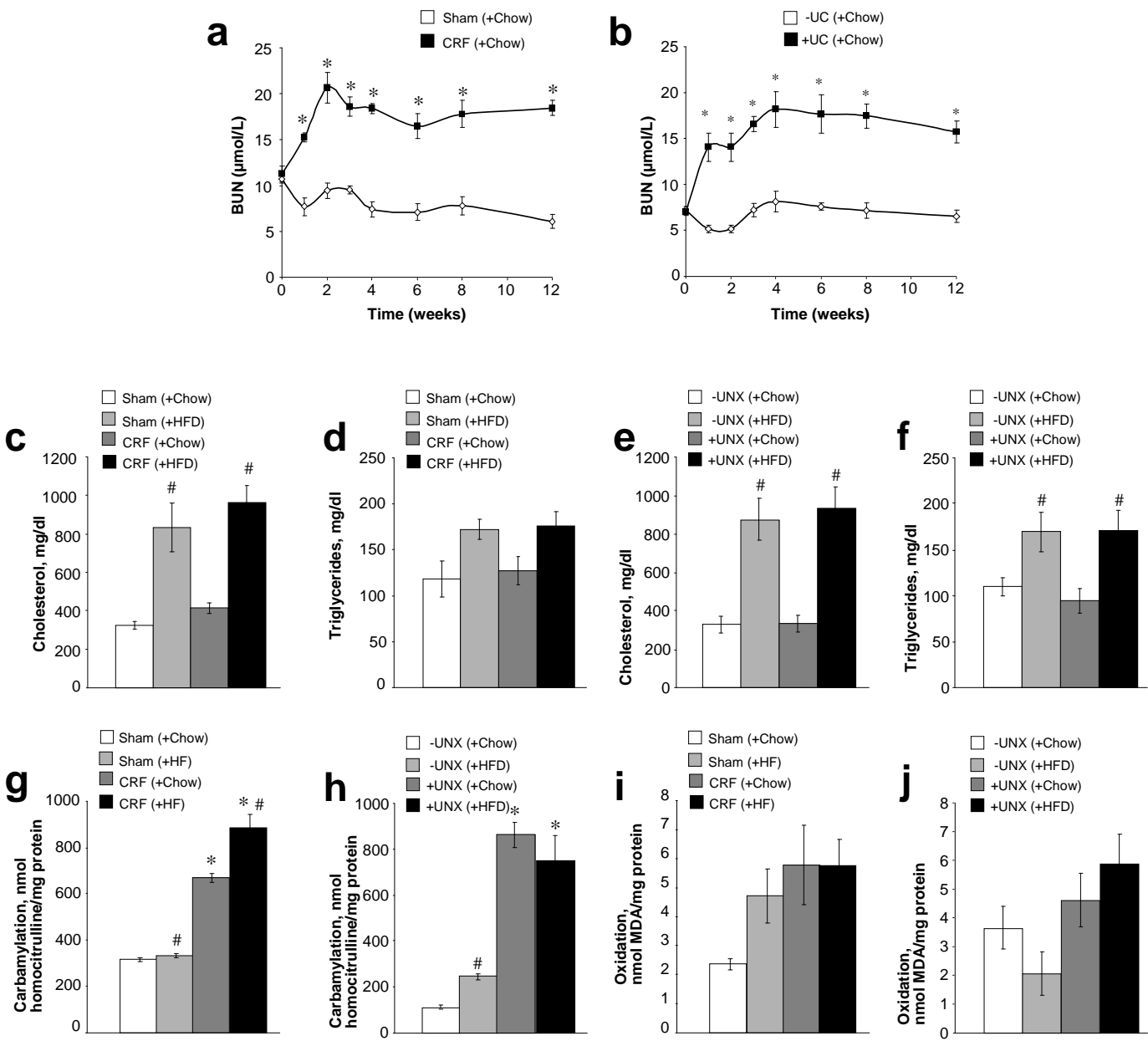


Figure I. Biochemical indexes of urea (a, b), total cholesterol (c, e), triglycerides (d, f), carbamylated plasma protein (g, h) and oxidized plasma protein (i, j) in CRF (a, c, d, g, i) and UC (b, e, f, h, j) mice fed with chow and HF diet. n=10-16 per group. *P<0.05 as compared to sham-operated or -UC control mice fed with HF diet; #P<0.05 as compared to CRF or +UC mice fed with chow diet.

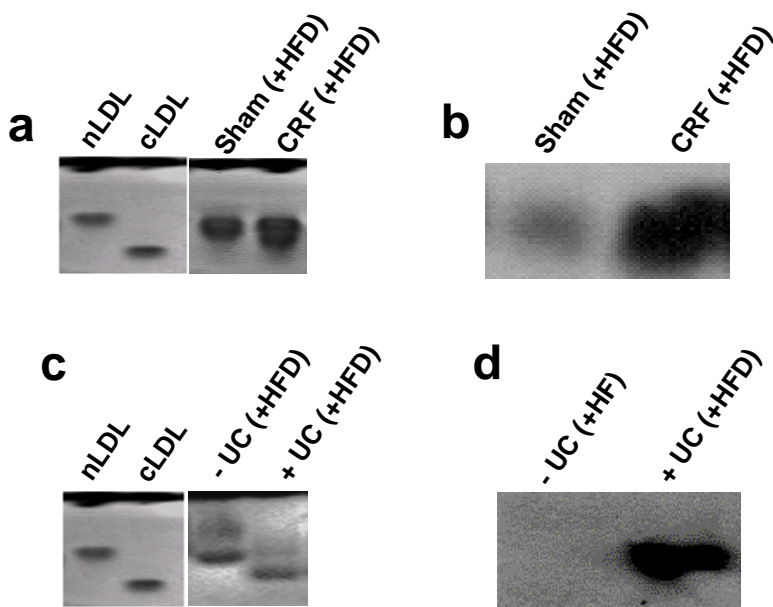


Figure II. Relative electrophoretic mobility (REM) of lipoproteins in CRF (a) and +UC (c) mice fed with HFD compared to sham control mice fed with HF diet. Western blotting of cLDL in CRF (b) and +UC (d) mice.

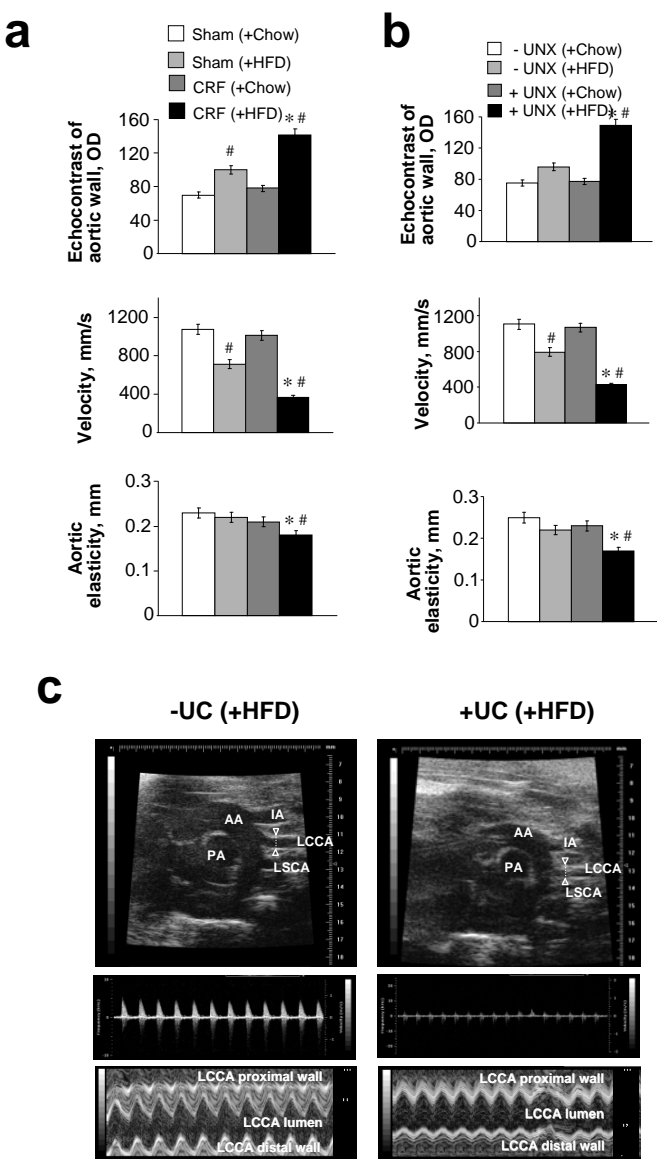


Figure III. Intravital ultrasound echography of CRF (a) and +UC (b, c) mouse aortas using VisualSonics Vevo 770: quantification of echo-positive lipid deposits, blood velocity and arterial/aortic wall elasticity measurements in aortic arches as visualized by B-mode, Doppler mode and M-mode, respectively. n=6-16 per group; *P<0.05 as compared to sham or -UC control mice fed with HF diet; #P<0.05 as compared to CRF or +UC mice fed with chow diet.