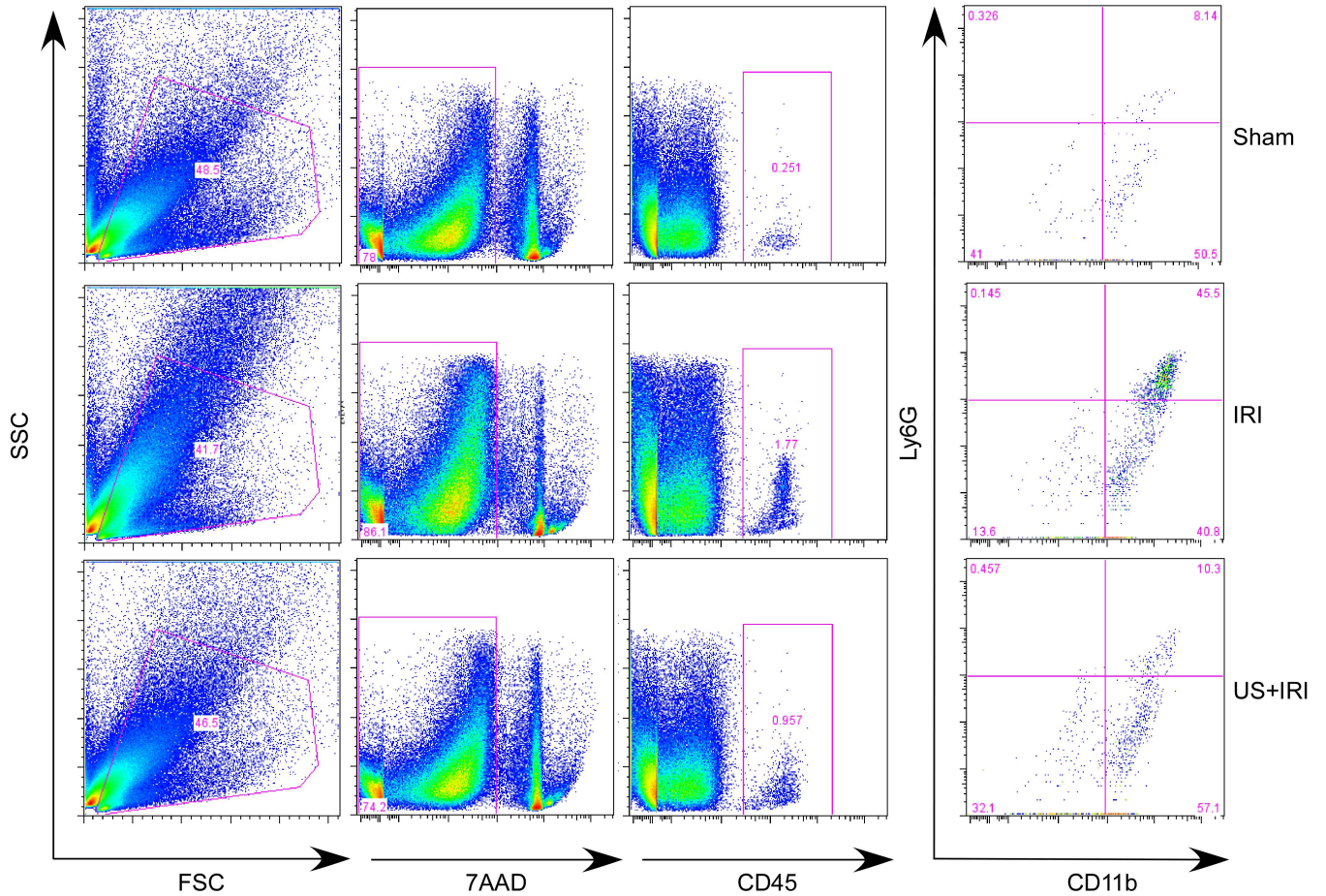


Supplemental Figure 1



Supplemental Figure 1. Representative gating strategy for FACS analysis of renal tissue. Renal single-cell suspensions were stained with 7AAD (7AAD<sup>+</sup> = dead cells) and antibodies for CD45 (total leukocytes), CD11b, and Ly6G. Renal CD45<sup>+</sup>CD11b<sup>high</sup>Ly6G<sup>high</sup> neutrophils (upper right quadrant) were reduced in animals with US prior to IRI.