

# Normal 25-hydroxyvitamin D levels are associated with less proteinuria and attenuate renal failure progression in children with chronic kidney disease

## Supplemental Figures

Supplemental Figure 1

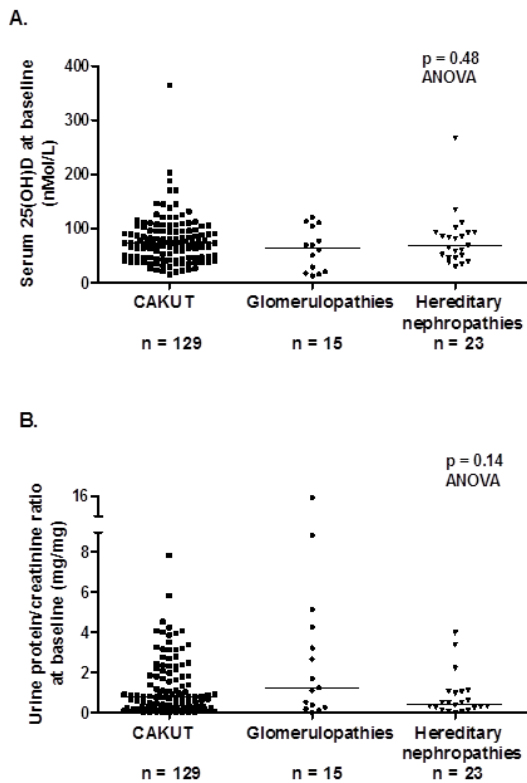


Figure 1A - 25(OH)D levels do not differ by underlying renal diagnoses

Figure 1B – 24-hour urine protein to creatinine ratios do not differ by underlying renal diagnoses

Supplemental Figure 2

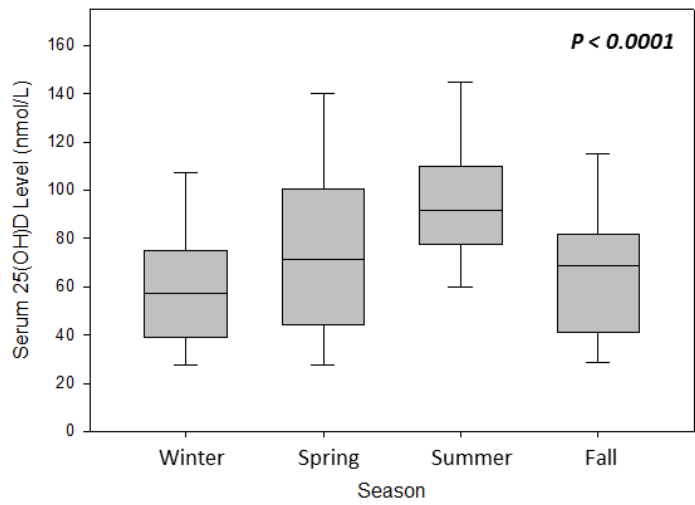


Figure 2 - Seasonal effects on 25(OH)D serum levels  
Box plot: 25th, median, 75th percentile, whiskers: 5th and 95th percentiles

Supplemental Figure 3

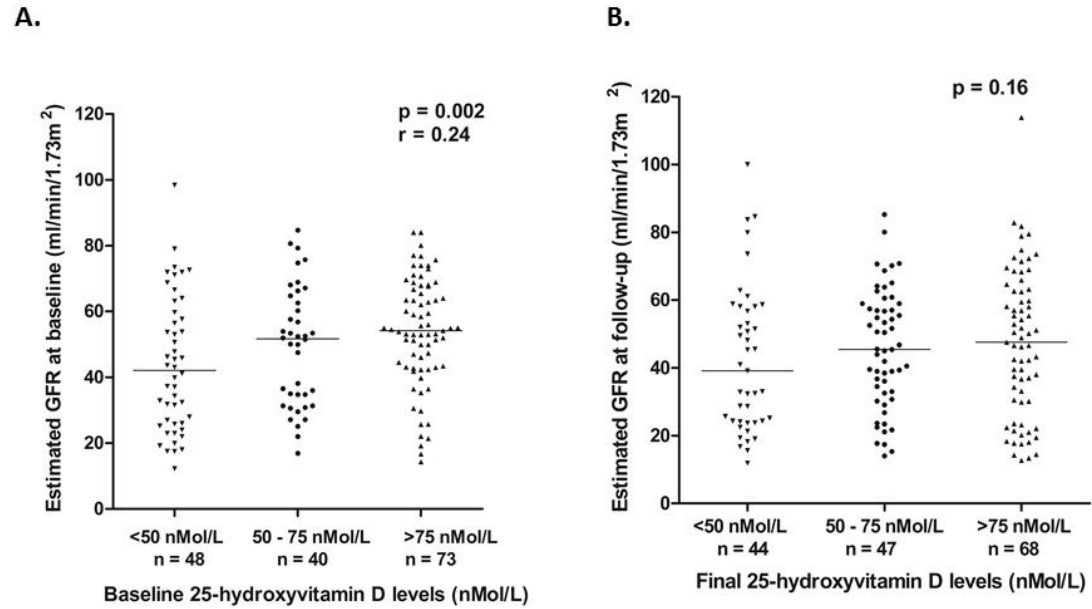


Figure 3A – 25(OH)D levels vs eGFR at baseline  
Figure 3B – 25(OH)D levels vs eGFR at follow-up