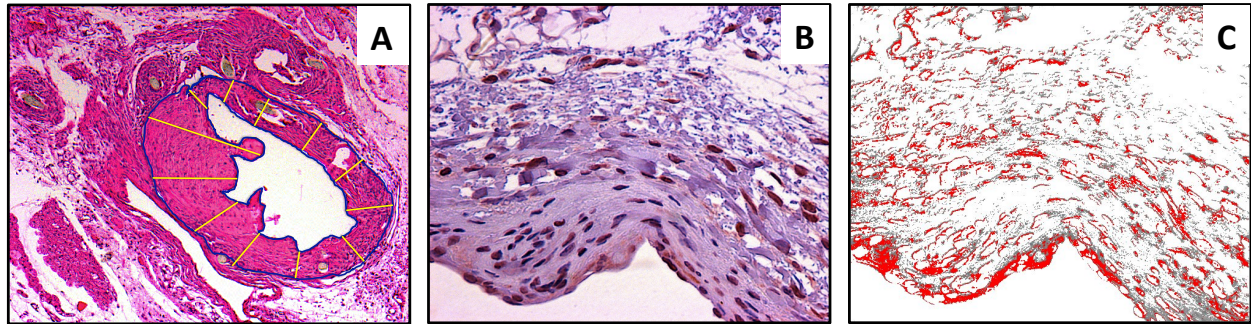


Supplemental Figure



Measurement of neointima and immunohistochemistry

A. Representative example of one AVF section in which the area used for measurement of neointima is identified between the blue lines. Twelve lines (yellow) were drawn radially to measure neointima thickness at five different levels. **B.** Representative example of section used for immunohistochemistry before analysis. **C.** Same section after background has been subtracted (Image J) leaving only the areas of positive stain that were used for quantification and normalized for total area.