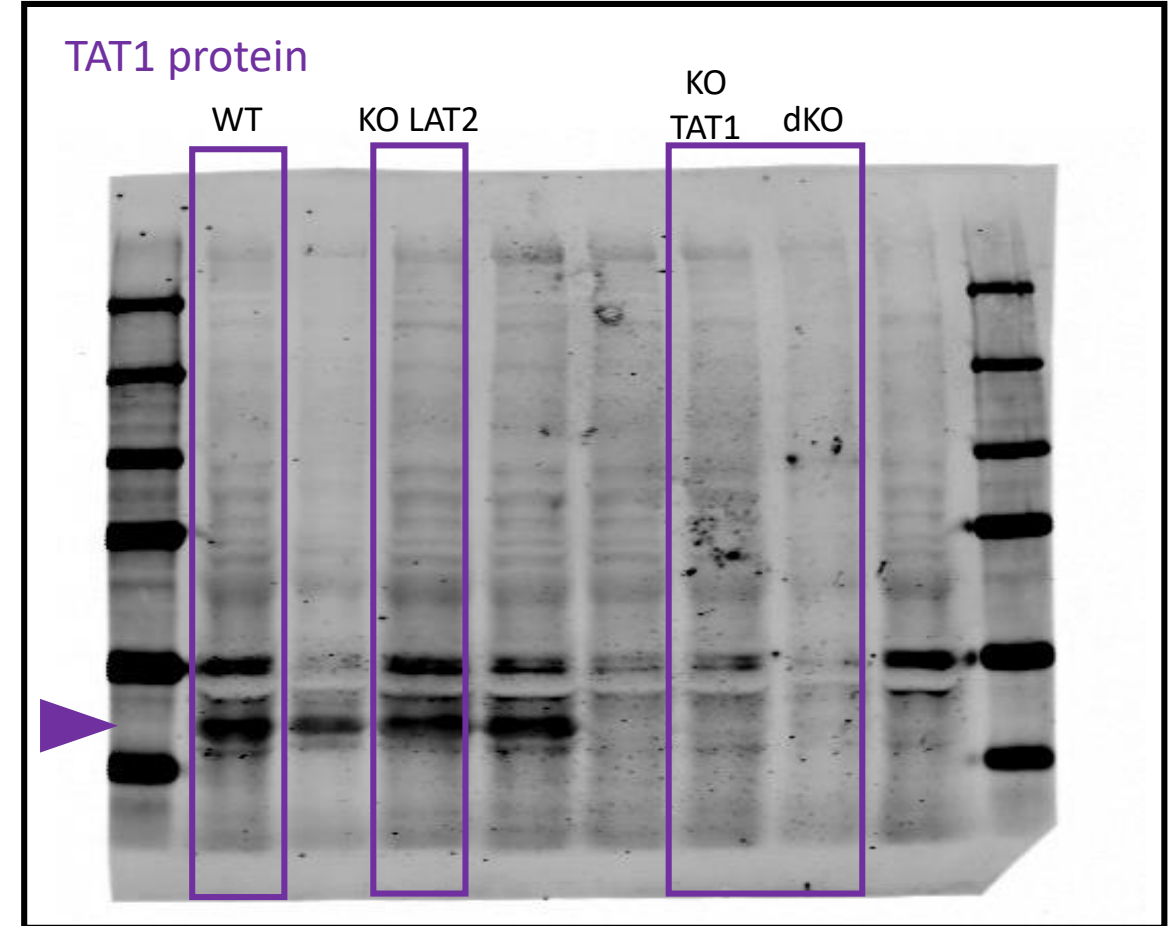
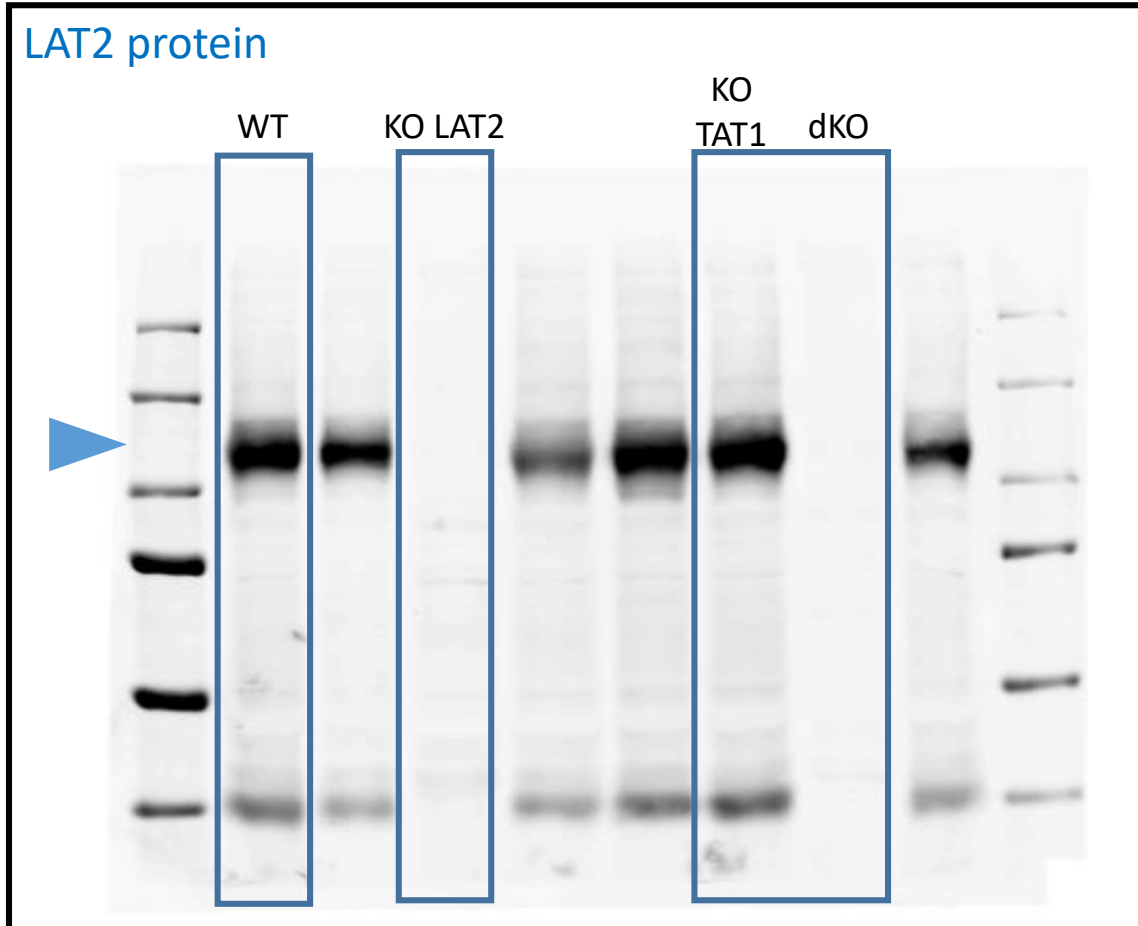


Full length images of WB corresponding to Figure 2 in *Cooperation of antiporter LAT2/CD98hc with uniporter TAT1 for renal reabsorption of neutral amino acids* submitted paper (JASN-2017-11-1205)



First and last lane in both gels is for molecular weight marker, corresponding to 220, 150, 100, 75, 50 and 37 kDa bands.

Full length images of WB corresponding to Figure 8 in *Cooperation of antiporter LAT2/CD98hc with uniporter TAT1 for renal reabsorption of neutral amino acids* submitted paper (JASN-2017-11-1205)

