

## Supplemental Material Table of Contents

Table S1. Codes of surgical and endovascular AVF procedures.

Table S2. Arteriovenous fistula (AVF) functional primary patency loss and abandonment, by the number of pre-maturation interventions.

Table S3. Odds ratios (ORs) and 95% of confidence intervals (CIs) of arteriovenous fistula (AVF) functional primary and abandonment without accounting for the competing risk of death.

Table S4. Odds ratios (ORs) of arteriovenous fistula (AVF) functional primary and abandonment and risk ratios (RRs) of frequency of post-maturation AVF interventions, excluding patients with frequency of pre-maturation interventions equal to or above 99 percentile.

Table S5. Odds ratios (ORs) of arteriovenous fistula (AVF) functional primary and abandonment and risk ratios (RRs) of frequency of post-maturation intervention, after counting interventions in the same month of maturation as pre-maturation interventions.

Figure S1. Cohort Derivation

Figure S2. Cumulative incidence functions (CIFs) of arteriovenous fistula (AVF) long-term outcomes by pre-maturation interventions. S2A: Functional primary patency loss by assisted vs. unassisted maturation; S2B: Functional primary patency loss by frequency of pre-maturation interventions; S2C: Abandonment by assisted vs. unassisted maturation; S2B: Abandonment by frequency of pre-maturation interventions. P values were obtained from Gray's test for equality of CIF.

**Table S1. Codes of surgical and endovascular AVF procedures**

<b>Type of intervention</b>	<b>Codes</b>
<b>Open surgical procedures</b>	<b>CPT-4 Codes</b>
Revision, open, arteriovenous fistula; with thrombectomy, autogenous or nonautogenous dialysis graft	36833
Revision of fistula or graft	36832
Fistula elevation or superficialization	36832
Ligation of accessory veins	36832
Open surgical procedures for treatment of steal syndrome	36832
Open repair of pseudoaneurysm	36832
Banding fistula or graft	36832
Open thrombectomy, arteriovenous fistula without revision, autogenous or nonautogenous dialysis graft	36831
<b>Endovascular interventions</b>	<b>CPT-4 Codes</b>
Angiogram with venous angioplasty	36147, 35476, 75978
Angiogram with arterial angioplasty	36147, 35475, 75962
Angiogram with venous angioplasty and stent	36147, 37205, 37206 (rarely +37239)
Angiography, arteriovenous shunt (e.g., dialysis patient fistula / graft)	75791 (must be present with other interventions)
Percutaneous thrombectomy	36870 (also 36147, 36148)
Percutaneous thrombectomy with venous angioplasty	36870, 36147, 36148, 35476, 75978
Percutaneous thrombectomy with arterial angioplasty	36870, 36147, 36148, 35475, 75962
Percutaneous thrombectomy with venous angioplasty and stent	36870, 36147, 36148, 37205, 37206 (rarely +37239)
<b>Inpatient procedures</b>	<b>ICD-9 Codes</b>
Compression of vein	459.2
Mechanical complications of vascular device, implant and graft	996.1
Other complication of vascular device, implant and graft	996.7

**Table S2. Arteriovenous fistula (AVF) functional primary patency loss and abandonment, by the number of pre-maturation interventions.**

<b>Number of Pre-Maturation Interventions</b>	<b>Total</b>	<b>Maintained AVF Functional Primary Patency</b>	<b>AVF Functional Primary Patency Loss</b>	<b>Death Before AVF Functional Primary Patency Loss</b>
	<b>7301</b>	<b>819(11.2)</b>	<b>5664(77.6)</b>	<b>818(11.2)</b>
<b>0 (Unassisted)</b>	4091	529(12.9)	3043(74.4)	519(12.7)
<b>≥1 (Assisted)</b>	3210	290(9)	2621(81.7)	299(9.3)
<b>1</b>	1676	190(11.3)	1335(79.7)	151(9)
<b>2</b>	847	64(7.6)	696(82.2)	87(10.3)
<b>3</b>	391	23(5.9)	333(85.2)	35(9)
<b>≥4</b>	296	13(4.4)	257(86.8)	26(8.8)
<b>Number of Pre-Maturation Interventions</b>	<b>Total</b>	<b>Maintained AVF Functional Secondary Patency</b>	<b>AVF Abandonment</b>	<b>Death Before AVF Abandonment</b>
	<b>7301</b>	<b>3352(45.9)</b>	<b>1847(25.3)</b>	<b>2102(28.8)</b>
<b>Unassisted</b>	4091	1849(45.2)	1090(26.6)	1152(28.2)
<b>Assisted</b>	3210	1503(46.8)	757(23.6)	950(29.6)
<b>1</b>	1676	799(47.7)	399(23.8)	478(28.5)
<b>2</b>	847	396(46.8)	187(22.1)	264(31.2)
<b>3</b>	391	189(48.3)	90(23)	112(28.6)
<b>≥4</b>	296	119(40.2)	81(27.4)	96(32.4)

**Table S3. Odds ratios (ORs) and 95% of confidence intervals (CIs) of primary and secondary AVF patency loss without accounting for the competing risk of death.**

	<b>Primary AVF Patency Loss</b>	
Number of pre-maturation AVF interventions	<b>Unadjusted OR (95% CI)</b>	<b>Adjusted OR (95% CI)*</b>
<b>0 (Unassisted)</b>	1.00	1.00
<b>≥1 (Assisted)</b>	1.53(1.37,1.72)	1.59(1.41,1.79)
<b>1</b>	1.35(1.17,1.55)	1.40(1.22,1.62)
<b>2</b>	1.59(1.31,1.92)	1.67(1.38,2.03)
<b>3</b>	1.98(1.48,2.64)	2.05(1.53,2.74)
<b>≥4</b>	2.27(1.61,3.20)	2.37(1.68,3.36)
	<b>Secondary AVF Patency Loss</b>	
	<b>Unadjusted OR (95% CI)</b>	<b>Adjusted OR (95% CI)*</b>
<b>0 (Unassisted)</b>	1.00	1.00
<b>≥1 (Assisted)</b>	1.18(1.06,1.31)	1.00(0.89,1.12)
<b>1</b>	0.86(0.75,0.98)	0.98(0.86,1.13)
<b>2</b>	0.78(0.65,0.93)	0.93(0.78,1.12)
<b>3</b>	0.82(0.64,1.05)	1.01(0.78,1.30)
<b>≥4</b>	1.04(0.80,1.35)	1.33(1.02,1.75)

\*Adjusted for age, gender, race, comorbid score, functional status, facility type, facility chain status, and log time of CVC dependency.

**Table S4. Odds ratios (ORs) of primary and secondary AVF patency loss and risk ratios (RRs) of frequency of post-maturation AVF interventions, excluding patients with frequency of pre-maturation interventions equal to or above 99 percentile.**

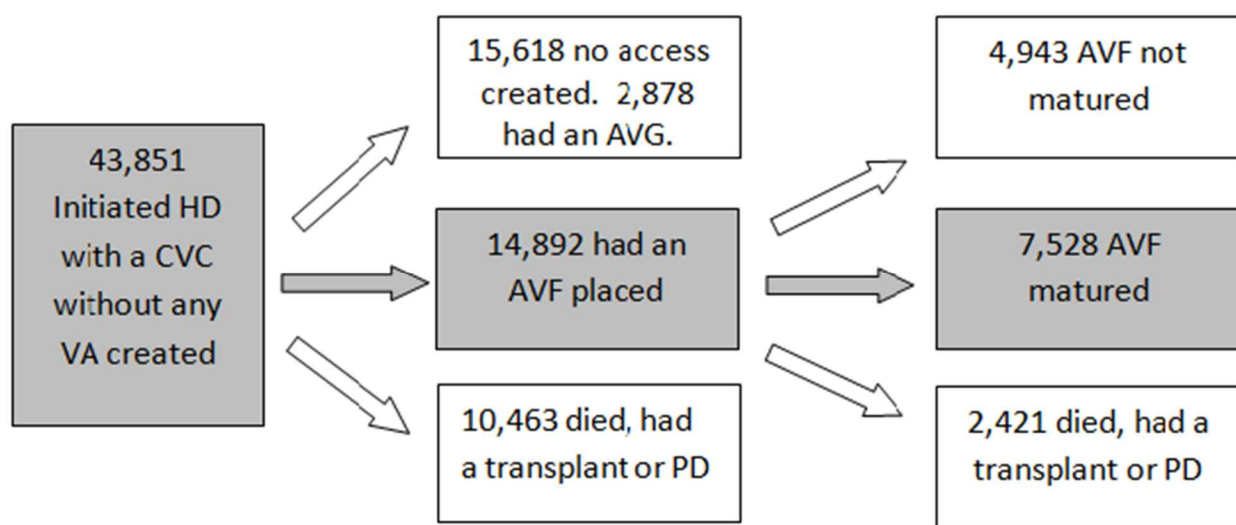
	<b>Primary AVF Patency Loss</b>	
Number of pre-maturation AVF interventions	<b>Unadjusted OR (95% CI)</b>	<b>Adjusted OR (95% CI)*</b>
<b>0 (Unassisted)</b>	1.00	1.00
<b>≥1 (Assisted)</b>	1.56(1.34,1.81)	1.59(1.36,1.87)
1	1.22(1.02,1.46)	1.27(1.06,1.52)
2	1.89(1.44,2.48)	1.96(1.48,2.58)
3	2.52(1.63,3.88)	2.54(1.64,3.93)
≥4	3.58(1.88,6.79)	3.57(1.871,6.80)
	<b>Secondary AVF Patency Loss</b>	
	<b>Unadjusted OR (95% CI)</b>	<b>Adjusted OR (95% CI)*</b>
<b>0 (Unassisted)</b>	1.00	1.00
<b>≥1 (Assisted)</b>	0.84(0.75,0.95)	0.98(0.87,1.11)
1	0.85(0.74,0.98)	0.96(0.83,1.11)
2	0.80(0.66,0.97)	0.94(0.78,1.15)
3	0.81(0.62,1.05)	0.96(0.73,1.26)
≥4	1.06(0.77,1.47)	1.33(0.95,1.86)
	<b>Post-Maturation AVF Interventions</b>	
	<b>Unadjusted RR (95% CI)</b>	<b>Adjusted RR (95% CI)*</b>
<b>0 (Unassisted)</b>	1.00	1.00
<b>≥1 (Assisted)</b>	0.95(0.88,1.02)	1.29(1.19,1.40)
1	0.89(0.81,0.97)	1.17(1.07,1.28)
2	0.95(0.85,1.07)	1.33(1.18,1.50)
3	0.99(0.84,1.17)	1.43(1.21,1.68)
≥4	1.25(1.02,1.53)	1.84(1.50,2.25)

\*Adjusted for age, gender, race, comorbid score, functional status, facility type, facility chain status, and log time of CVC dependency.

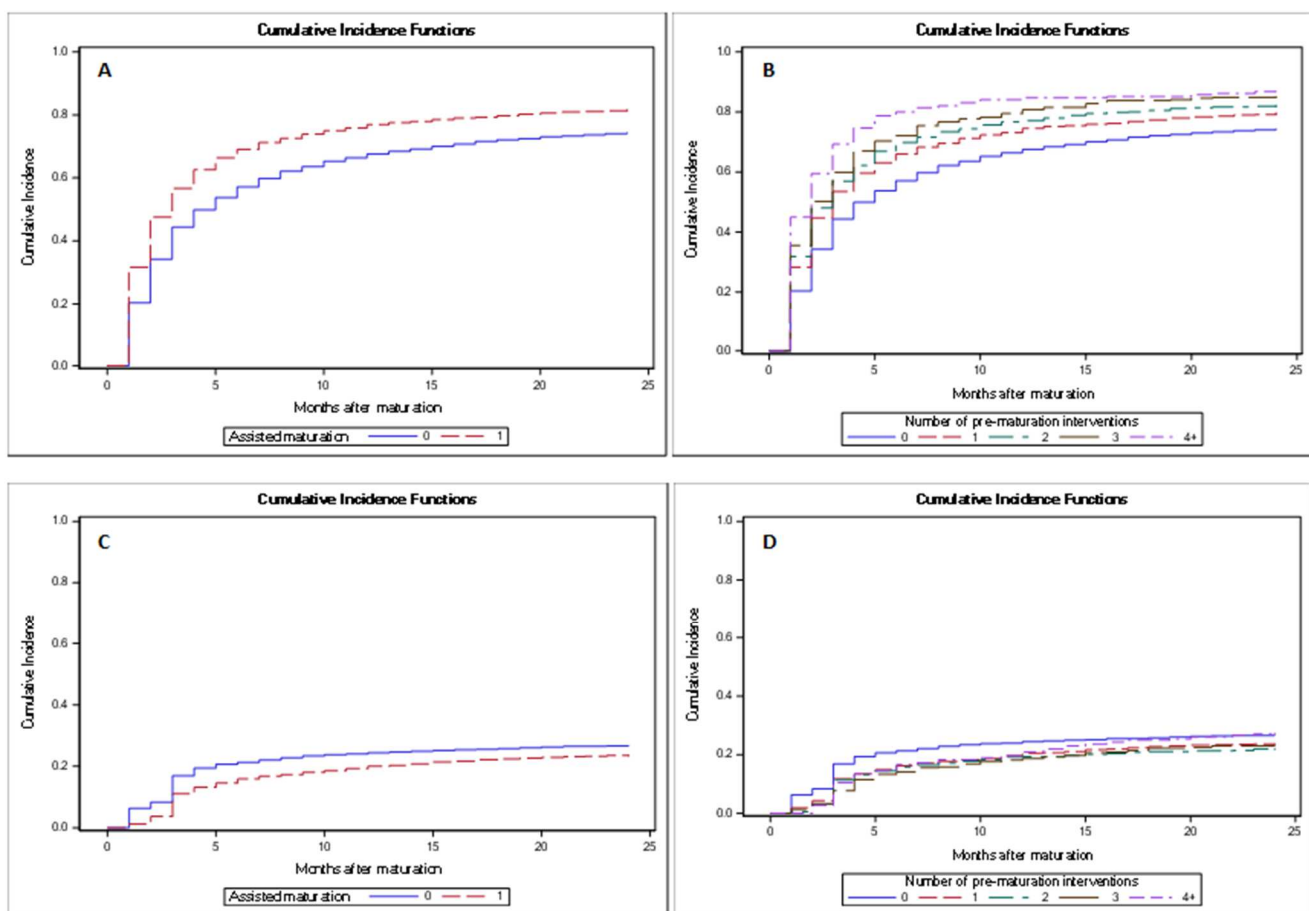
**Table S5. Odds ratios (ORs) of primary and secondary patency loss and risk ratios (RRs) of frequency of post-maturation intervention, after counting interventions in the same month of maturation as pre-maturation interventions.**

	<b>Primary AVF Patency Loss</b>	
Number of pre-maturation AVF interventions	<b>Unadjusted OR (95% CI)</b>	<b>Adjusted OR (95% CI)*</b>
<b>0 (Unassisted)</b>	1.00	1.00
<b>≥1 (Assisted)</b>	1.57(1.37,1.80)	1.62(1.41,1.87)
1	1.22(1.04,1.44)	1.27(1.07,1.49)
2	1.72(1.37,2.15)	1.79(1.43,2.24)
3	2.19(1.59,3.01)	2.36(1.72,3.25)
≥4	2.92(2.02,4.22)	3.04(2.10,4.38)
	<b>Secondary AVF Patency Loss</b>	
	<b>Unadjusted OR (95% CI)</b>	<b>Adjusted OR (95% CI)*</b>
<b>0 (Unassisted)</b>	1.00	1.00
<b>≥1 (Assisted)</b>	0.90(0.80,1.01)	1.03(0.92,1.16)
1	0.86(0.75,1.00)	0.97(0.84,1.13)
2	0.88(0.74,1.04)	1.00(0.84,1.20)
3	0.86(0.69,1.08)	1.04(0.82,1.31)
≥4	1.13(0.90,1.42)	1.40(1.10,1.77)
	<b>Post-Maturation AVF Interventions</b>	
	<b>Unadjusted RR (95% CI)</b>	<b>Adjusted RR (95% CI)*</b>
<b>0 (Unassisted)</b>	1.00	1.00
<b>≥1 (Assisted)</b>	1.02(0.94,1.10)	1.39(1.28,1.51)
1	0.93(0.84,1.02)	1.20(1.09,1.32)
2	0.91(0.80,1.02)	1.28(1.14,1.44)
3	1.10(0.95,1.28)	1.60(1.38,1.85)
≥4	1.48(1.27,1.73)	2.27(1.94,2.64)

\*Adjusted for age, gender, race, comorbid score, functional status, facility type, facility chain status, and log time of CVC dependency.



Supplemental Figure 1 (Figure S1)



Supplemental Figure 2 (Figure S2)