

## Supplementary Appendix

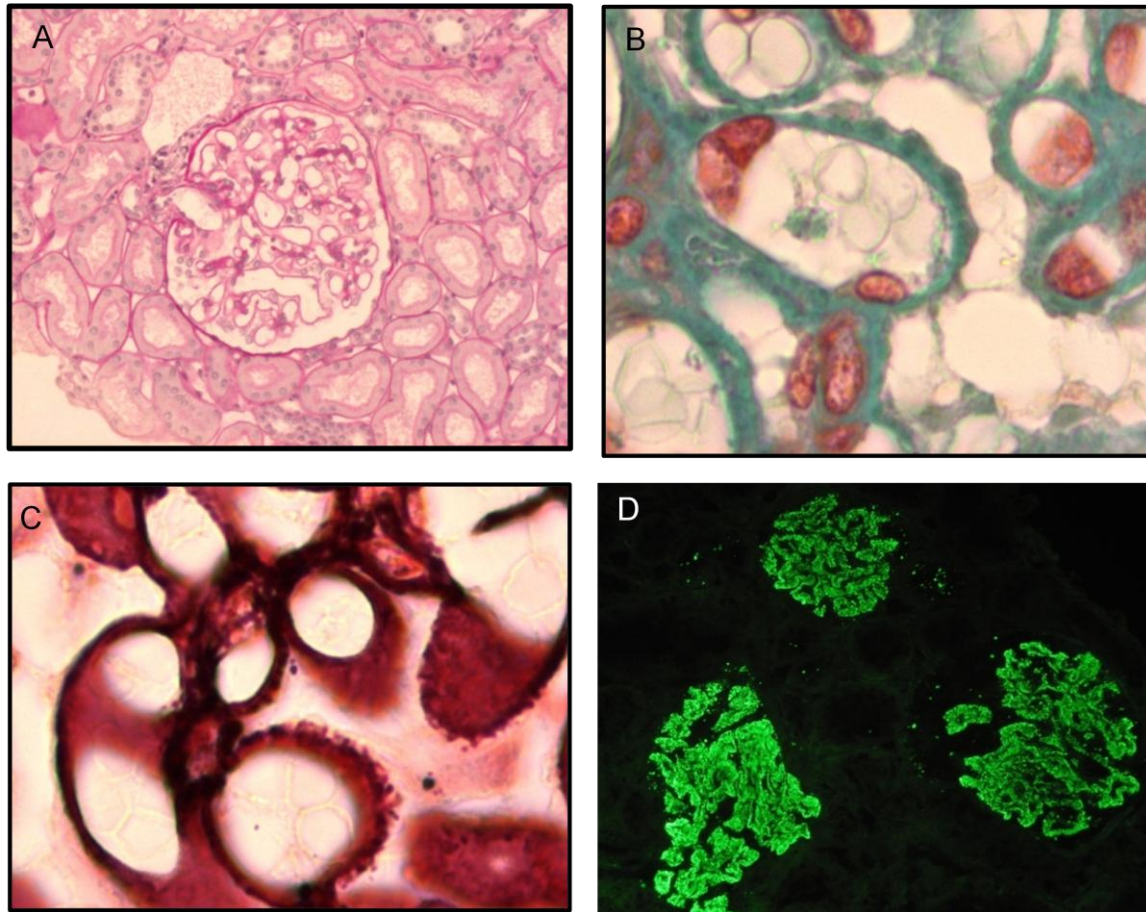


Figure 1S. Characteristics of membranous nephropathy. Light microscopy and immunofluorescence study of kidney biopsy specimen. (A) Normal aspect of glomerulus with periodic acid-Schiff (PAS) stain (x10). (B) Irregular thickening of the glomerular basement membrane with Masson trichrome stain (x100). (C) Subepithelial spikes with silver stain (x100). (D) Glomeruli with diffuse, finely granular deposition of IgG (X10).