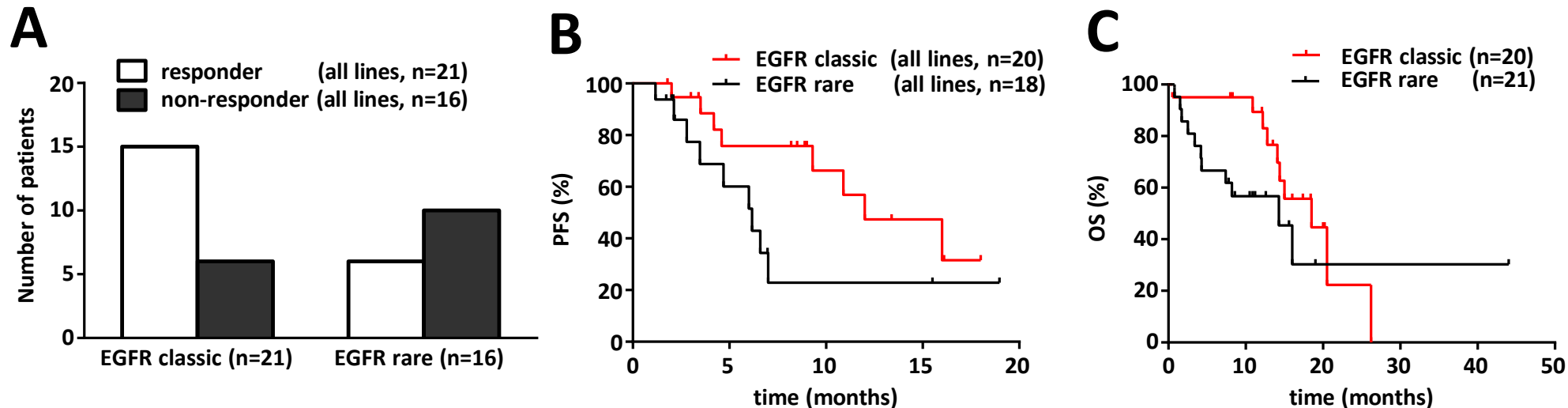


Supplemental Figure 1



Supplemental Figure 1 . Anti-EGFR TKI treatment in advanced lung adenocarcinoma patients with classic versus rare EGFR mutations. (A) Irrespective of treatment line, patients with classic EGFR mutant tumors responded significantly better to TKI therapy (data presented as number of patients; $P=.039$; Chi-square test). (B) Furthermore, patients with classic EGFR mutant tumors tended to have longer PFS than those with other rare EGFR mutations ($P=.076$). (C) Importantly, there was no OS benefit in patients with EGFR classic mutations as compared to those with rare EGFR mutations ($P=.212$).