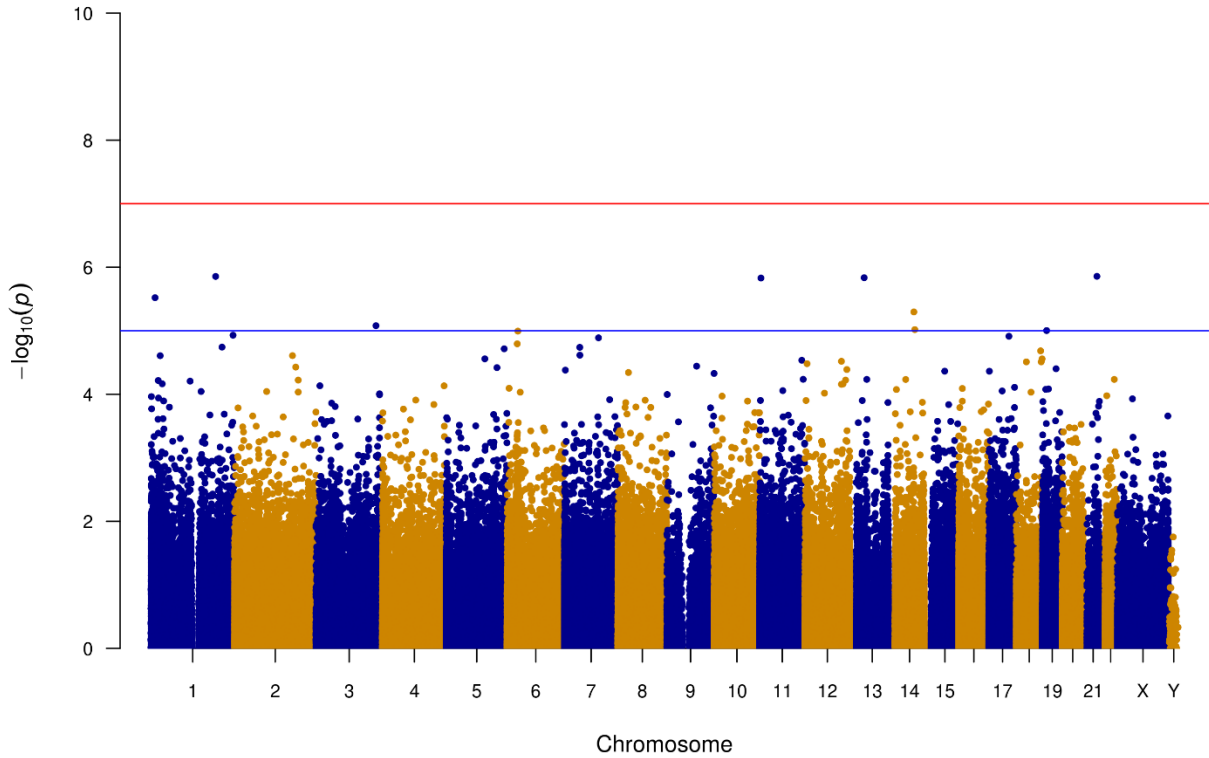


Television viewing time at follow-up



Quintiles of television viewing and sitting time at follow-up

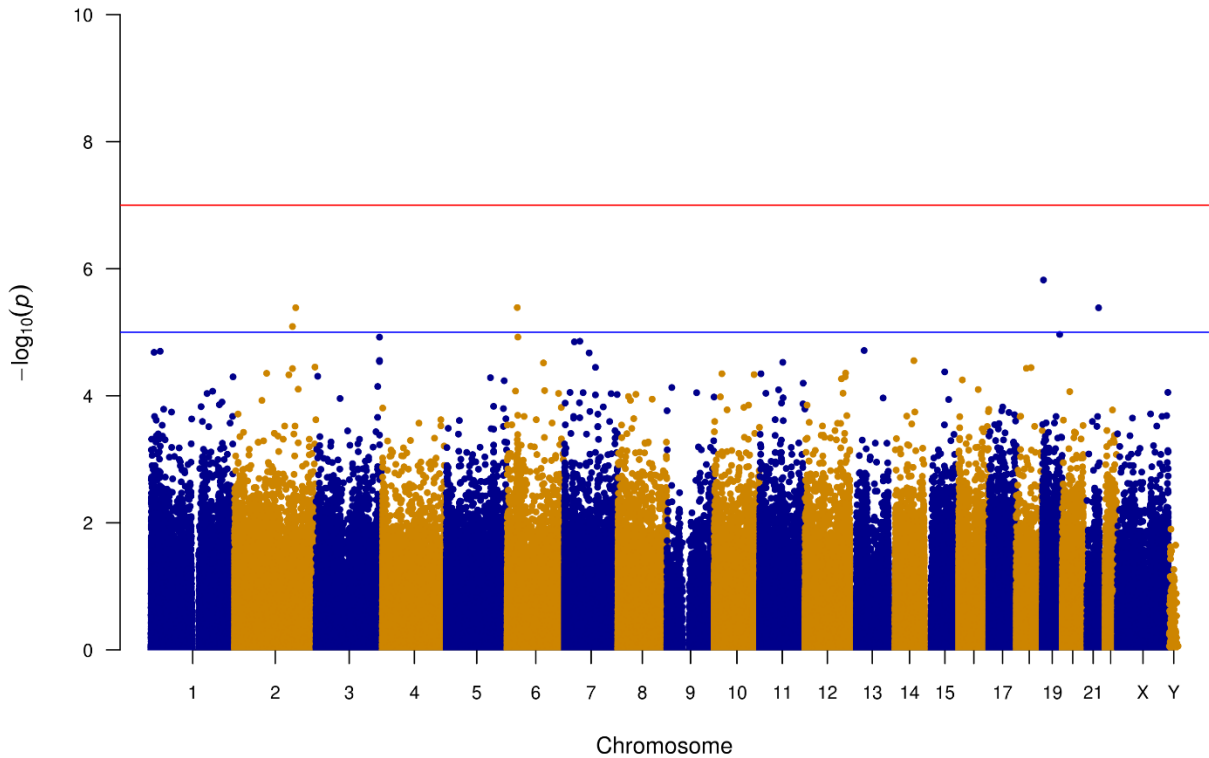


Figure S3. Manhattan plots showing results of genome-wide studies of DNA methylation in peripheral blood in relation to television (TV) viewing time (N=1,078) and quintiles of television viewing and sitting time (N=1,227) with DNA methylation at 484,826 CpG sites at follow-up of the Melbourne Collaborative Cohort Study (MCCS). Red and blue line depict thresholds for statistically significant findings ($P < 1.0 \times 10^{-7}$) and weaker evidence of association ($P < 1.0 \times 10^{-5}$), respectively.