

Appendix 1

Phase 2 – Participation bias

Figure S1. Phase 2: Participation flowchart

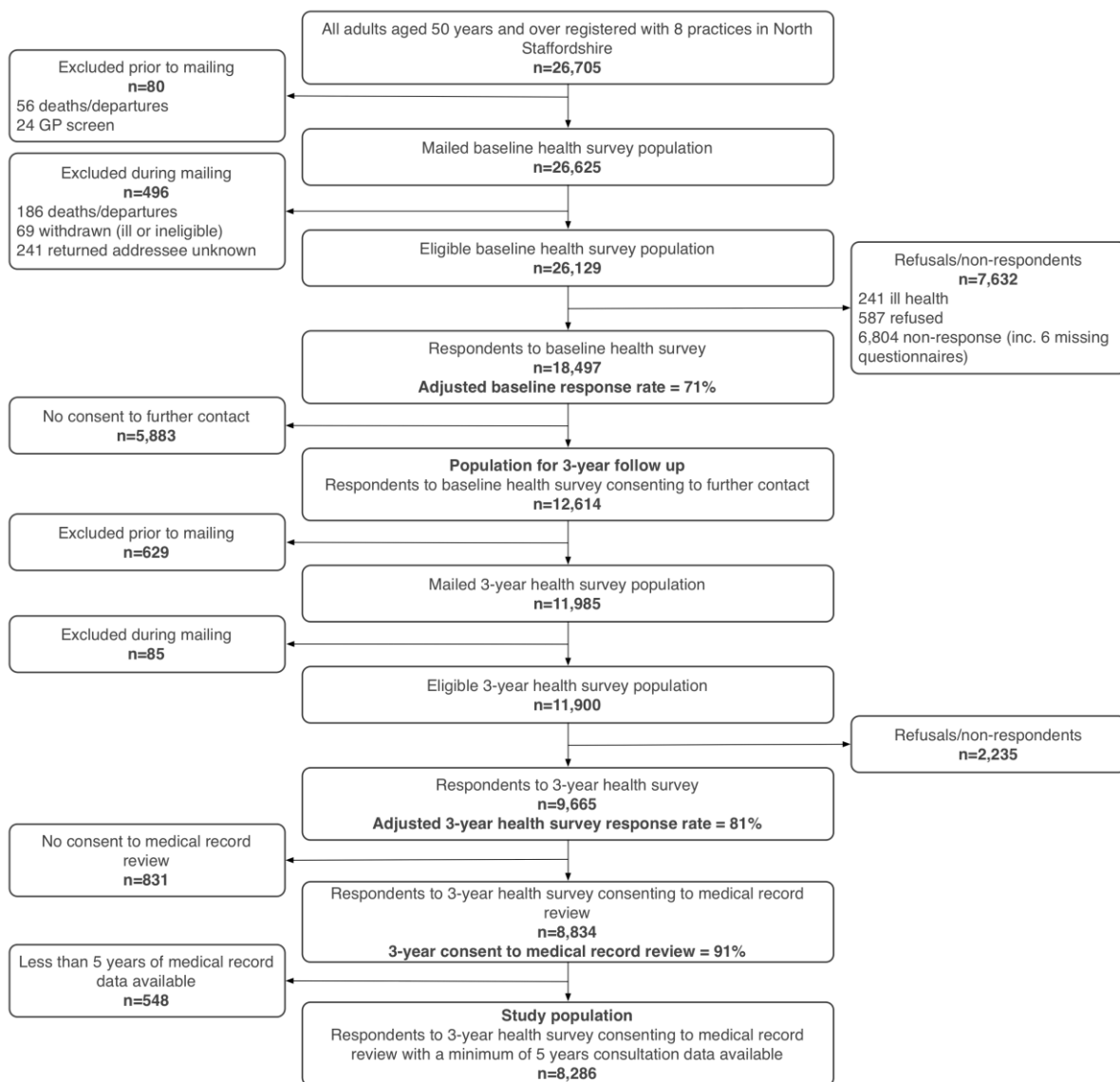


Table S1. Phase 2: Descriptive comparison of responders and non-responders. Data are frequencies (%) except where indicated otherwise.

	Non-responders (n=7,632)	Incomplete responders** (n=10,211)	Study population (n=8,286)
Female	3,883 (51)	5,834 (57)	4,477 (54)
Age, mean (SD)	65.3 (11.7)	67.6 (10.8)	64.5 (9.1)
Married or cohabiting*	-	6,493 (65)	6,007 (72)
Current employment*	-	2,348 (24)	2,513 (30)
Social class^a *			
High	-	1,357 (13)	1,701 (21)
Middle	-	1,471 (14)	1,546 (19)
Low	-	6,181 (61)	4,546 (55)
Deprivation score^b, mean (SD)*	-	12,836 (7,574)	13,953 (7,451)
Self-reported health at baseline			
SF-12 physical component summary (0-100) ^c , mean (SD)*	-	40.5 (12.6)	42.4 (12.2)
Anxiety (0-21) ^d , mean (SD)*	-	6.8 (4.2)	6.5 (4.1)
Depression (0-21) ^d , mean (SD)*	-	5.1 (3.8)	4.3 (3.5)
Cognitive impairment (0-100) ^e , mean (SD)*	-	16.3 (25.2)	12.4 (20.9)
Baseline self-reported pain*	-	6,750 (66)	5,989 (72)
Baseline ACR-90 widespread pain*	-	1,892 (19)	1,850 (22)
Baseline Manchester widespread pain*	-	1,145 (11)	1,125 (14)

a. Higher = higher managerial, higher professional or lower managerial/professional. Middle = intermediate occupations or self-employed. Lower = lower supervisory/technical, semi-routine or routine occupations[28].

b. Rank index of multiple deprivation[29] (low score = high deprivation)

c. 12-item short form health survey – physical component summary[39] (100 best health)

d. Hospital Anxiety and Depression Scale[43] (21 = worst health)

e. Sickness Impact Profile – alertness subscale[5] (100 = worst health)

SD. standard deviation

*Data on these variables were incomplete with n values ranging from 8,456 to 10,210 for incomplete responders and 7,444 to 8,283 for the study population.

** Baseline-only responders or responders to baseline and 3 years with either no consent to medical record review or access to less than 5 years of medical record data.