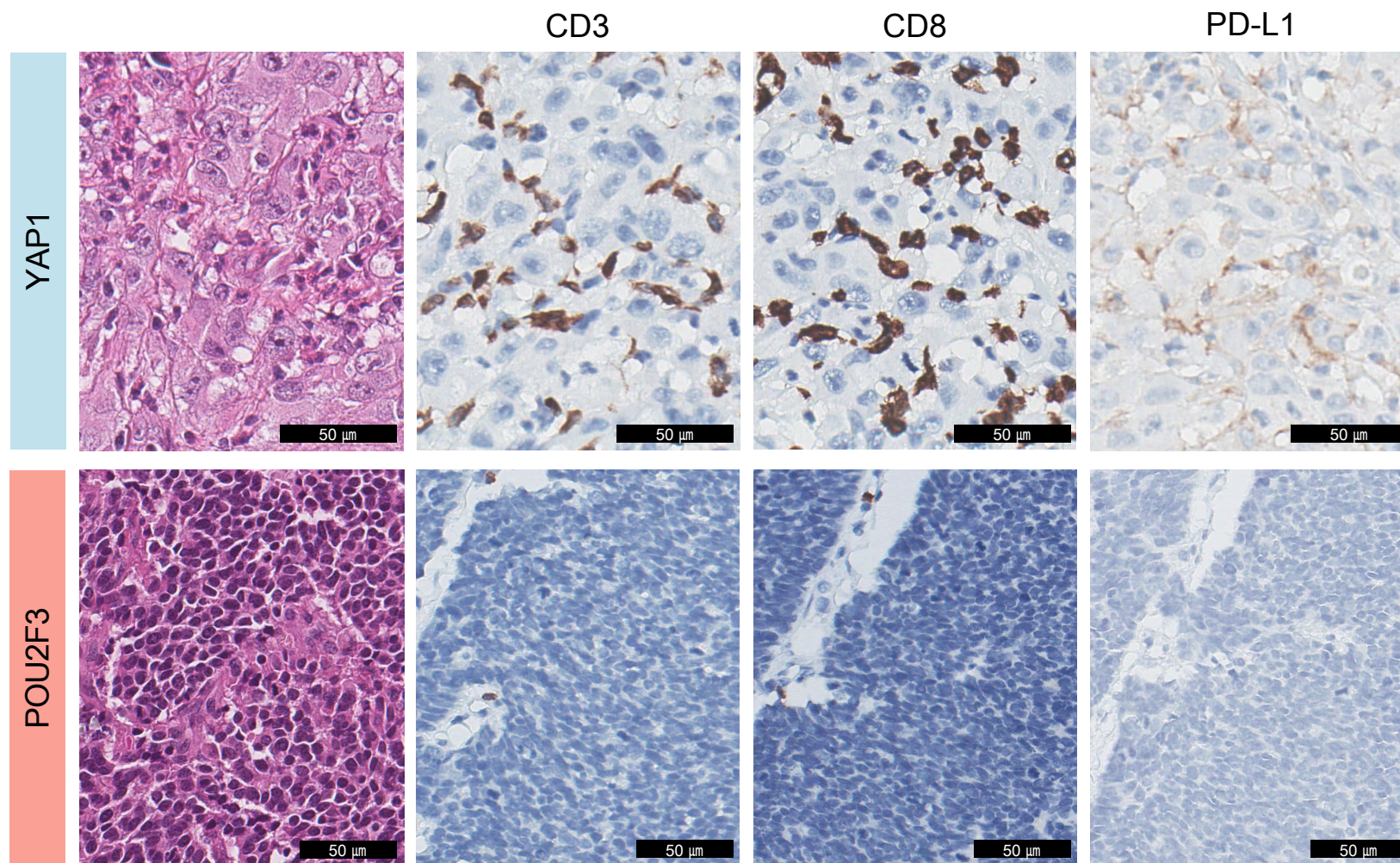


Supplementary Figure S5. Tumor microenvironment of YAP1-positive and POU2F3-positive EP-NEC/PDC.



(a) YAP1-positivity was noted in a case with undifferentiated carcinoma of the bile duct, where intratumoral infiltration of CD3-positive and CD8-positive lymphocytes were noted. The tumor also showed focal PD-L1 expression (combined proportion score of 5). (b) A 52-year-old female patient was diagnosed with small cell neuroendocrine carcinoma of uterus, which was characterized by immune cold microenvironment.