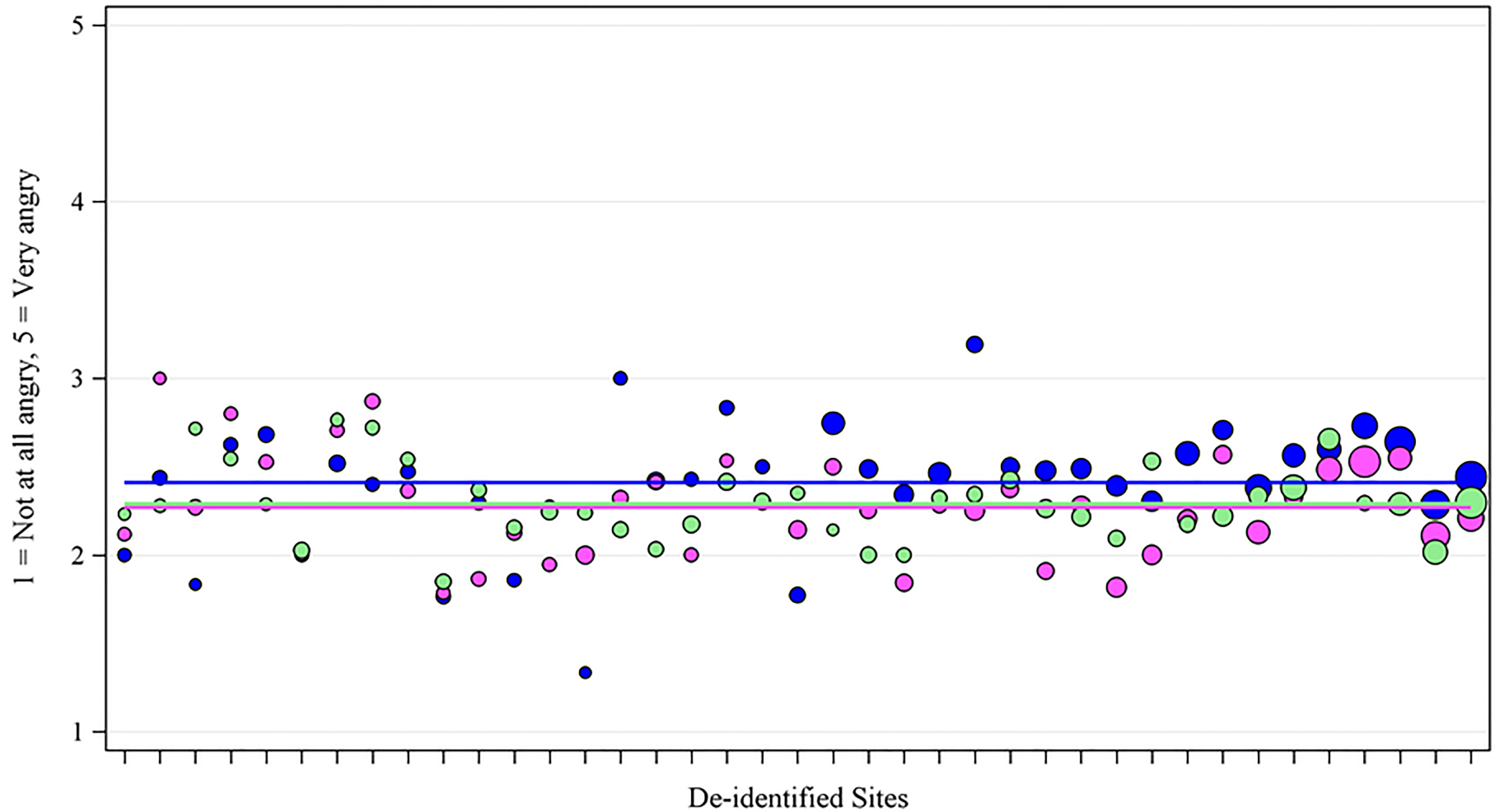


OPQC NAS Project
Attitudes Survey

Desired
Direction
of Change



To what extent do you feel angry towards people using drugs?



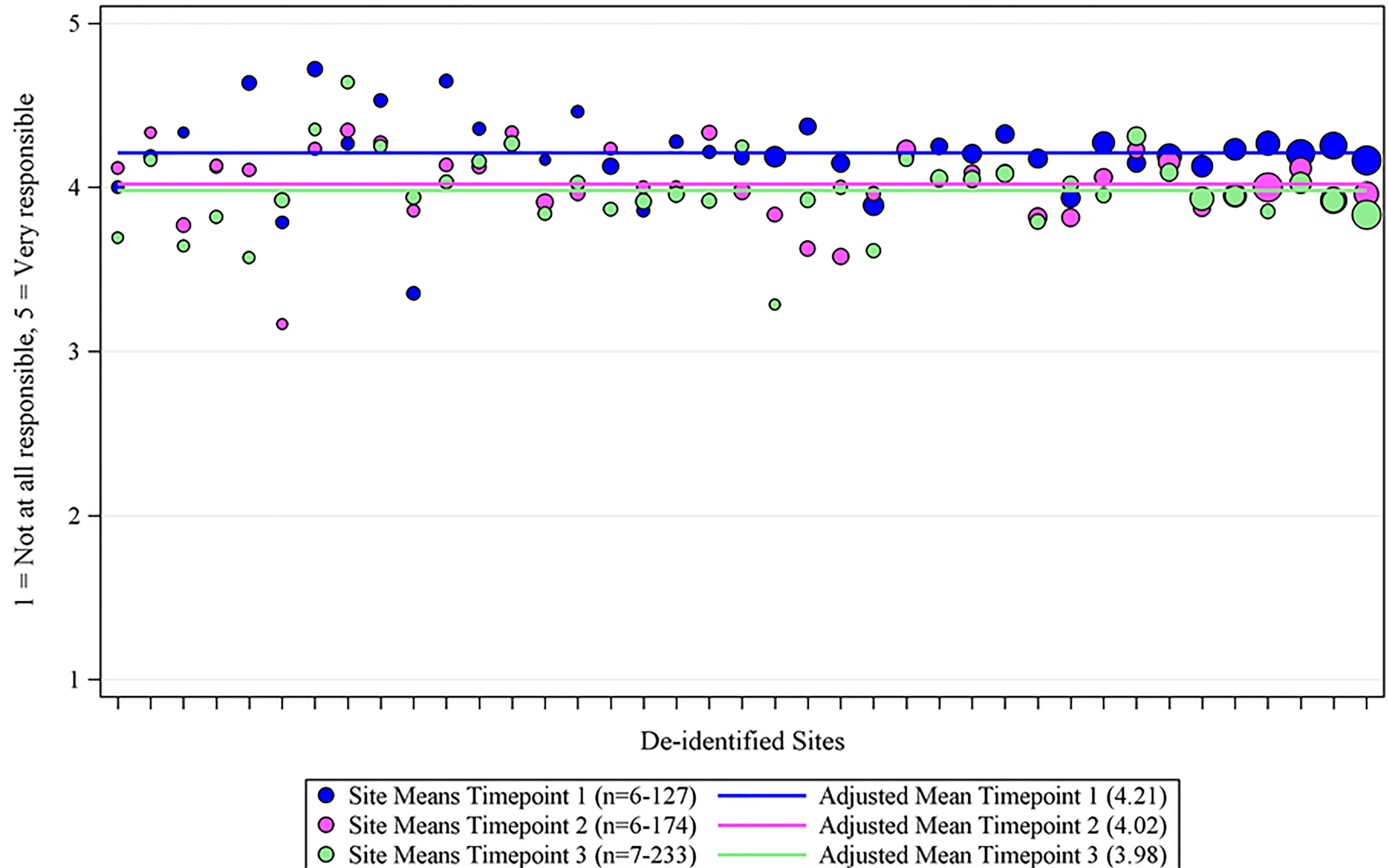
- Site Means Timepoint 1 (n=6-127)
- Site Means Timepoint 2 (n=6-174)
- Site Means Timepoint 3 (n=7-233)
- Adjusted Mean Timepoint 1 (2.41)
- Adjusted Mean Timepoint 2 (2.27)
- Adjusted Mean Timepoint 3 (2.29)

OPQC NAS Project
Attitudes Survey

Desired
Direction
of Change



To what extent is an individual personally responsible for their problematic drug use?

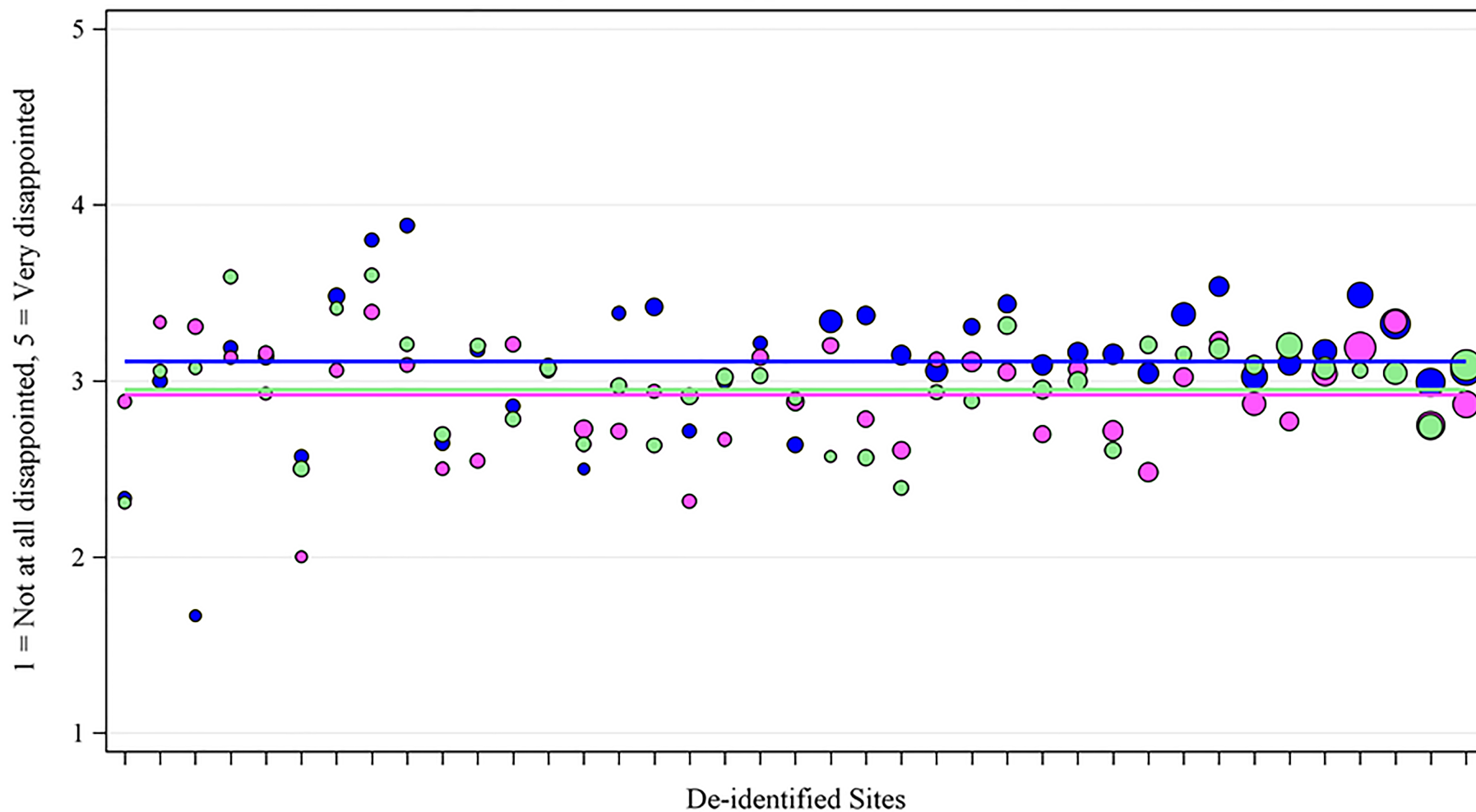


OPQC NAS Project
Attitudes Survey

Desired
Direction
of Change



To what extent do you feel disappointed towards people using drugs?

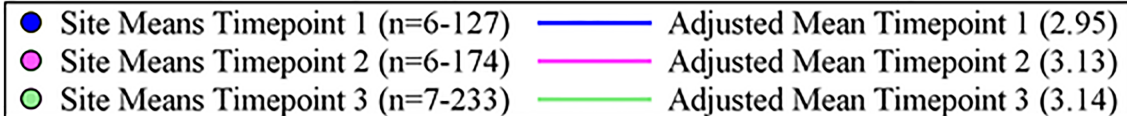
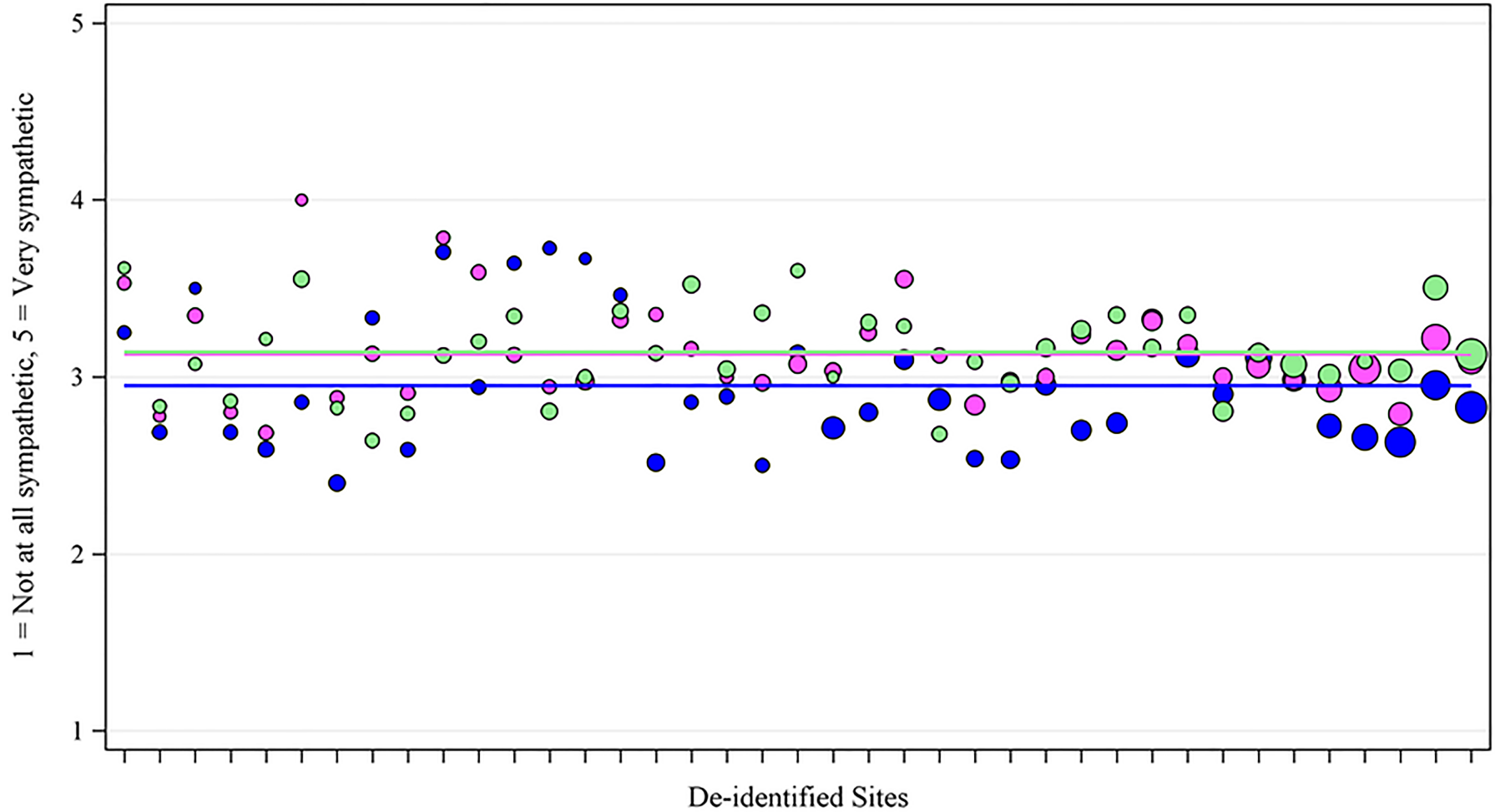


OPQC NAS Project
Attitudes Survey

Desired
Direction
of Change



To what extent do you feel sympathetic towards people using drugs?



OPQC NAS Project
Attitudes Survey

Desired
Direction
of Change



To what extent do people who use drugs deserve the same level of medical care as people who don't use drugs?

