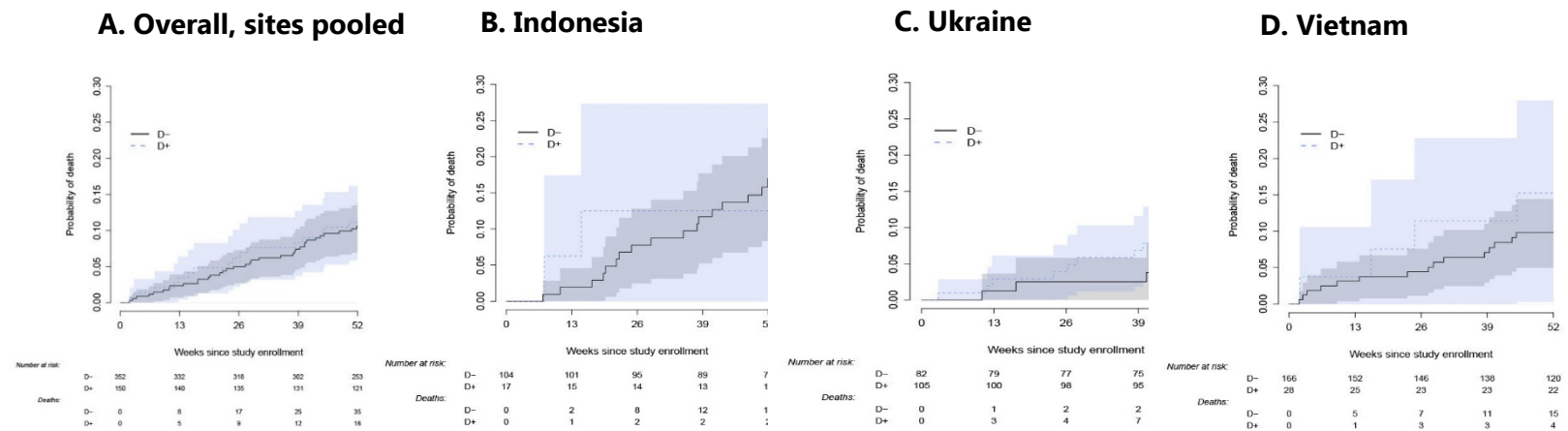


Supplemental Digital Content 4: Mortality among PLWH who inject drugs by baseline depression status.



Crude estimates are shown, without adjustment for baseline covariates. An inverted Kaplan-Meier estimate is plotted with a pointwise 95% CI. Depressed (D+) is defined as moderate/severe depression on PHQ-9 at baseline. D- is no/mild depression.